

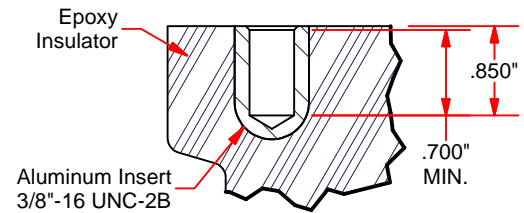
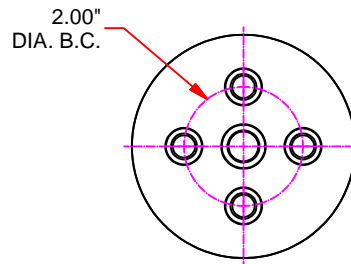
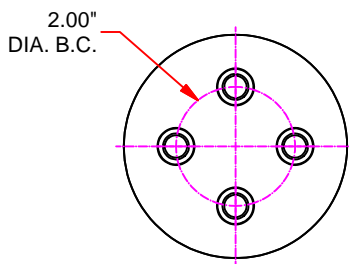
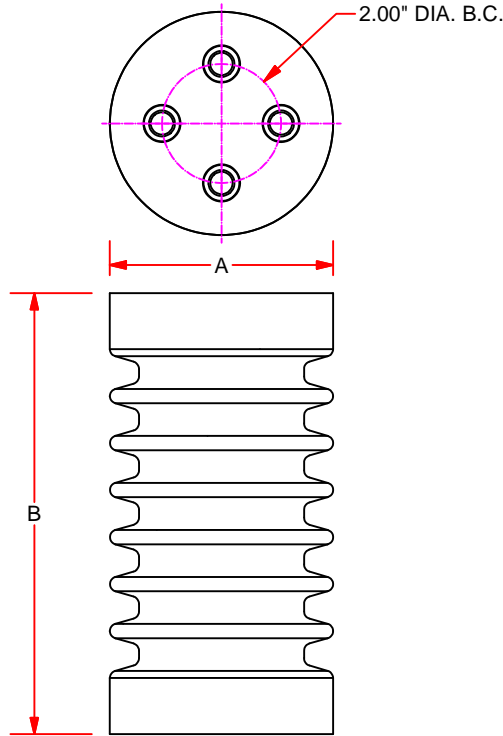
# Stand-Off Insulators (Medium Duty)



Technical Data

Indoor Applications

Cycloaliphatic Epoxy



**INSERT DETAIL**

**INSERT CONFIGURATION "C"**

**INSERT CONFIGURATION "F"**

Part Number	Dimensions (in.)		Electrical Ratings, (kV)						Mechanical Ratings (lbs.)			Approx. Weight
	A	B	Voltage Class(kV)	BIL	Withstand 1 Min. 60 Hz Dry	Withstand 10 Sec. 60 Hz Wet	Leakage Distance (in.)	Dry Arc Distance (in.)	Cantilever <sup>②</sup>	Tensile	Compression	
U-SOI3735CC	3.75	3.50	5	60	19	15	4.57	3.50	1,500	5,000	20,000	2.3
U-SOI3760CC	3.75	6.00	15	95	36	26	9.74	6.00	1,000	5,000	20,000	3.8
U-SOI3776CC	3.75	7.56	15/25	110	49	39	11.93	7.56	800	5,000	20,000	4.0
U-SOI3785CC	3.75	8.5	25	125	49	39	13.51	8.50	750	5,000	20,000	4.5
U-SOI3710CC	3.75	10.00	25/35	150	70	60	16.24	10.00	700	5,000	20,000	6.0
U-SOI3712CC	3.75	11.92	35	200	80	65	19.41	11.92	600	5,000	20,000	6.9

① Medium Duty insulators are recommended for a variety of applications requiring multiple bolt hole patterns.  
 Note: These insulators can have a center or 5th insert molded into either the top or the bottom of the insulator (see insert Configuration C and F).

② These insulators must be mounted on a flat surface that is at least as wide as the base of the insulator. Cantilever values are measured at 2.50" above insulator top surface.



**PCORE Electric Co., Inc.**  
 200 West Dewey St.  
 Goldsboro, NC 27530

Phone: +1.919.734.0460  
 Fax: +1.919.734.0902  
 www.hubbellpowersystems.com

**Data Sheet DSSOI-03**  
 04 November 2015