

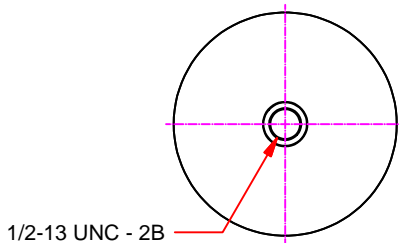
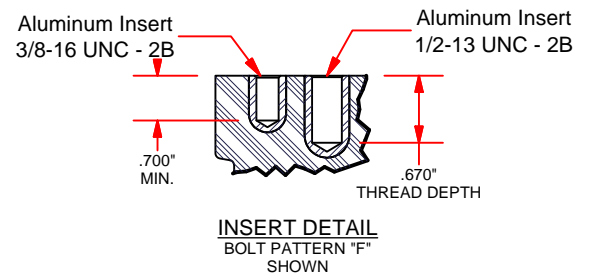
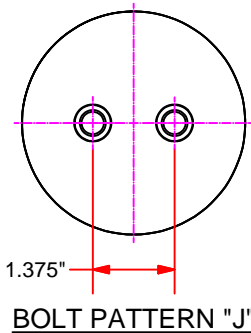
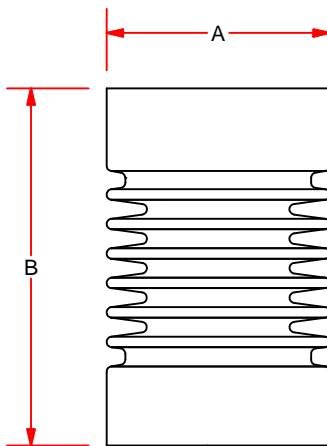
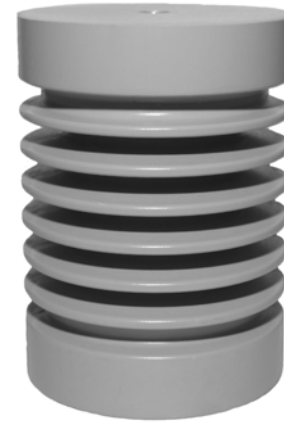
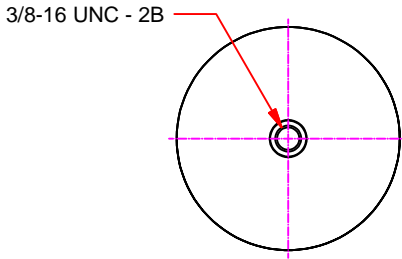
Stand-Off Insulator (High Creep)



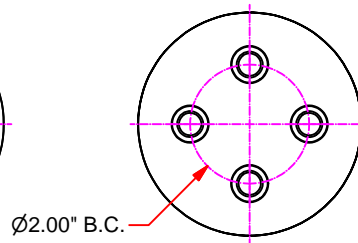
Technical Data

Indoor and Outdoor Applications

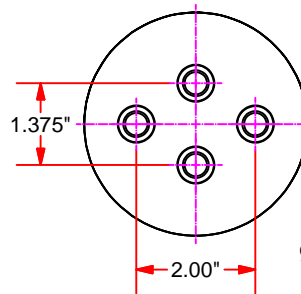
Cycloaliphatic Epoxy



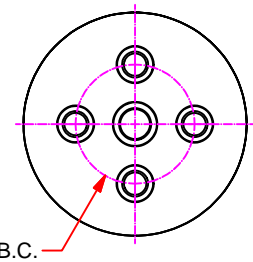
BOLT PATTERN "A" OR "E"



BOLT PATTERN "C"



BOLT PATTERN "D"

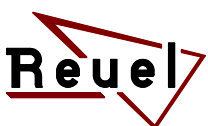


BOLT PATTERN "F"

Part Number	Dimensions (in.)		Electrical Ratings, (kV)						Mechanical Ratings (lbs.)			Approx. Weight
	A	B	Voltage Class(kV)	BIL	Withstand 1 Min. 60 Hz Dry	Withstand 10 Sec. 60 Hz Wet	Leakage Distance (in.)	Dry Arc Distance (in.)	Cantilever ^②	Tensile	Compression	
U-SOI3751HCAE	3.75	5.12	15	95	36	26	10.87	5.12	1,250	3,000	20,000	3.4
U-SOI3760HCCC	3.75	6.00	15	95	36	26	12.41	6.00	1,250	3,000	20,000	3.8
U-SOI3760HCCFA	3.75	6.00	15	95	36	26	12.41	6.00	1,250	3,000	20,000	3.8
U-SOI3760HCDD	3.75	6.00	15	95	36	26	12.41	6.00	1,250	3,000	20,000	3.8
U-SOI3760HCFF	3.75	6.00	15	95	36	26	12.41	6.00	1,250	3,000	20,000	3.8
U-SOI3760HCJJ	3.75	6.00	15	95	36	26	12.41	6.00	1,250	3,000	20,000	3.8

① High Creep insulators are recommended for a variety of applications including supports for bus bar, fuse mounting, switch parts, and other electrical devices.

② These insulators must be mounted on a flat surface that is at least as wide as the base of the insulator. Cantilever values are measured at 2.50" above insulator top surface.



PCORE Electric Co., Inc.
200 West Dewey St.
Goldsboro, NC 27530

Phone: +1.919.734.0460
Fax: +1.919.734.0902
www.hubbellpowersystems.com

Data Sheet DSSOI-04
28 October 2015