

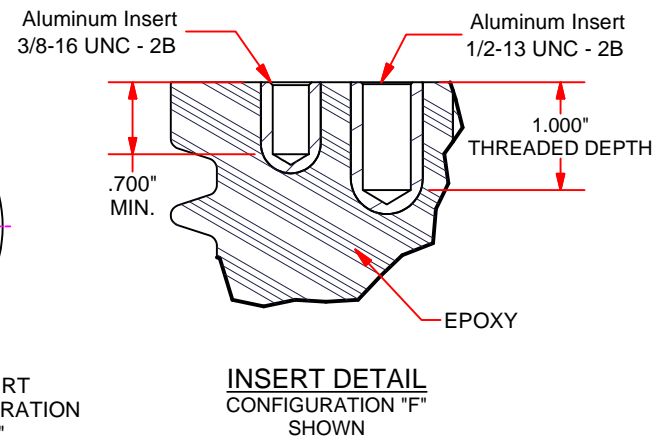
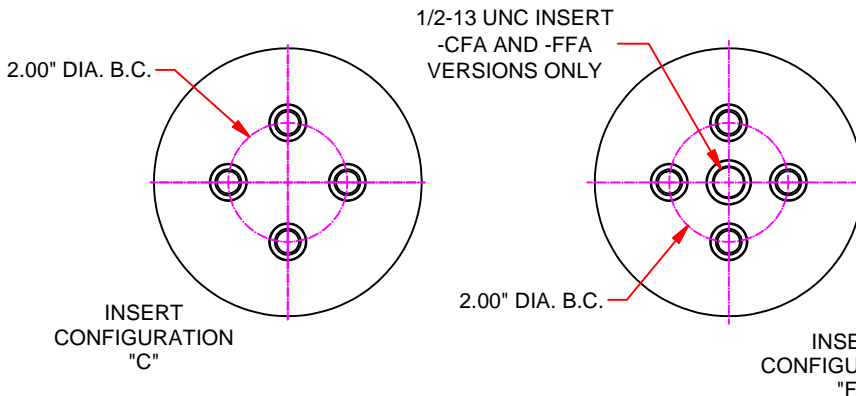
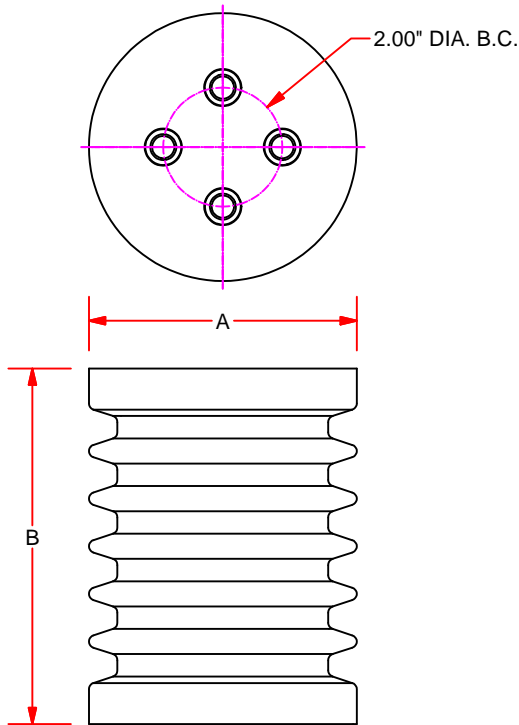
Stand-Off Insulator (Heavy Duty)



Technical Data

Indoor and Outdoor Applications

Cycloaliphatic Epoxy



Part Number	Dimensions (in.)		Electrical Ratings, (kV)						Mechanical Ratings (lbs.)			Approx. Weight (lbs.)
	A	B	Voltage Class(kV)	BIL (kV)	Withstand 1 Min. 60 Hz Dry	Withstand 10 Sec. 60 Hz Wet	Leakage Distance (in.)	Dry Arc Distance (in.)	Cantilever ^②	Tensile	Compression	
U-SOI151CC	4.50	6.00	15	95	35	-	10.50	6.00	2,000	8,000	20,000	5.2
U-SOI151CFA	4.50	6.00	15	95	35	-	10.50	6.00	2,000	8,000	20,000	5.2
U-SOI151FFA	4.50	6.00	15	95	35	-	10.50	6.00	2,000	8,000	20,000	5.2

① Heavy Duty insulators are recommended for applications where high mechanical strength is required.

② These insulators must be mounted on a flat surface that is at least as wide as the base of the insulator. Cantilever values are measured at 2.50" above insulator top surface.

③ These insulators are offered with 2 different insert configurations. These configurations are noted at the end of the part number. Example: U-SOI151CC. Each letter stands for an insert configuration.

Example: -CC Represents (4) 3/8"-16 inserts in each end.
 -CFA Represents (4) 3/8"-16 inserts in one end and (4) 3/8"-16 inserts with a 1/2"-13 5th insert in the other end.
 -FFA Represents (4) 3/8"-16 inserts and a center 1/2"-13 5th insert in both ends.



PCORE Electric Co., Inc.
 200 West Dewey St.
 Goldsboro, NC 27530

Phone: +1.919.734.0460
 Fax: +1.919.734.0902
www.hubbellpowersystems.com

Data Sheet DSSOI-05
 23 October 2015