

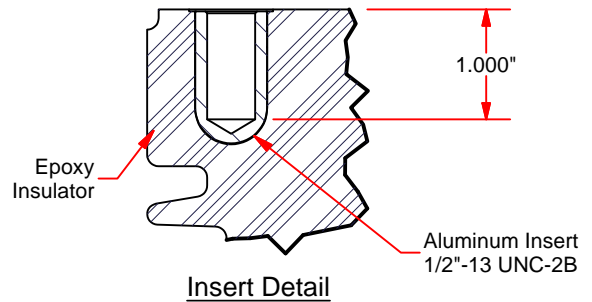
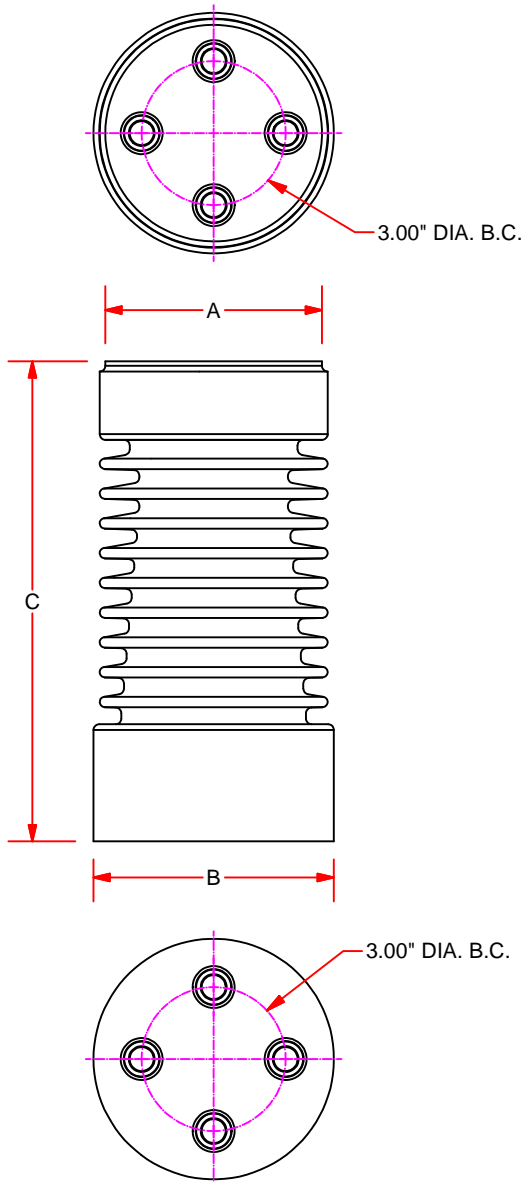
Station Post Insulators



Technical Data

Indoor and Outdoor Applications

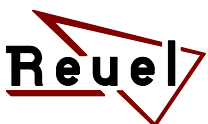
Cycloaliphatic Epoxy



Part Number	Dimensions (in.)			Type	Electrical Ratings, (kV)						Mechanical Ratings (lbs.)			Approx. Weight (lbs.)
	A	B	C		Voltage Class(kV)	BIL	Withstand 1 Min. 60 Hz Dry	Withstand 10 Sec. 60 Hz Wet	Leakage Distance (in.)	Dry Arc Distance (in.)	Cantilever ^②	Tensile	Compression	
U-SPI6010	4.5	5.0	10.0	TR-205	15	110	70	60	20.8	10.0	2,000	10,000	20,000	10
U-SPI6012	4.5	5.0	12.0	TR-205	15/25	125	95	60	26.6	12.0	2,000	10,000	20,000	12
U-SPI6014	4.5	5.0	14.0	TR-208	25	150	95	80	32.0	14.0	2,000	10,000	20,000	14
U-SPI6018	5.0	6.0	18.0	TR-210	38	200	100	80	37.7	18.0	2,000	10,000	20,000	18

① Reuel station post insulators meet or exceed the electrical and mechanical-strength requirements established in ANSI Standard C29.9 (1983) for porcelain standard-strength station post insulators.

② These insulators have tapered root diameters. To attain the rated cantilever strength, the end with the larger root diameter must be oriented toward the mounting surface, and the insulator must be mounted on a flat surface that is at least as wide as the base of the insulator. Cantilever values are measured at 2.50" above insulator top surface.



PCORE Electric Co., Inc.
200 West Dewey St.
Goldsboro, NC 27530

Phone: +1.919.734.0460
Fax: +1.919.734.0902
www.hubbellpowersystems.com

Data Sheet DSSPI-01
12 November 2015