

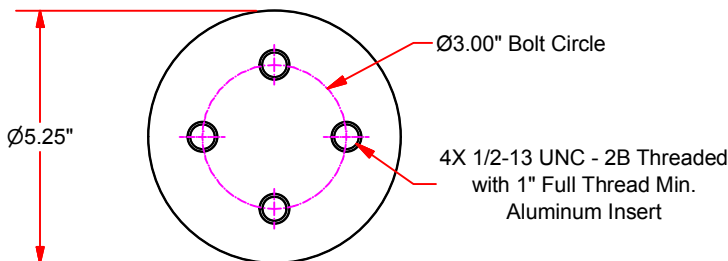
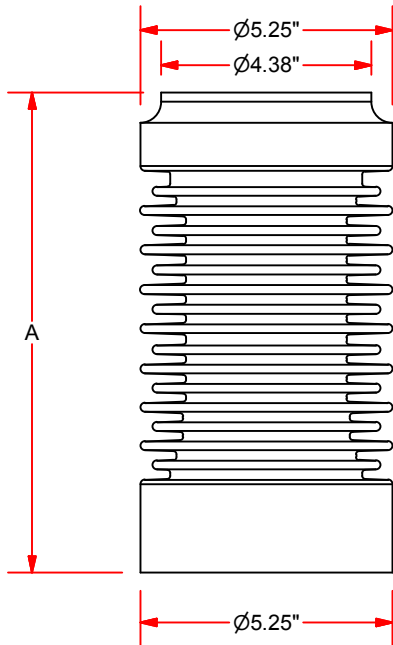
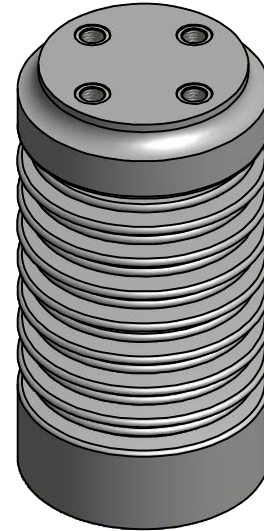
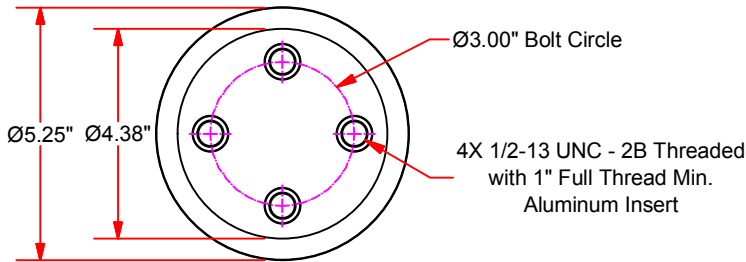
# Station Post Insulator



Technical Data

Indoor and Outdoor Applications

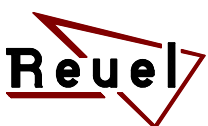
Cycloaliphatic Epoxy



Part Number	Dimensions (in.) A	Electrical Ratings, (kV)						Mechanical Ratings (lbs.)			Approx. Weight (lbs.)
		Voltage Class(kV)	BIL (kV)	Withstand 10 Sec. A.C.	Withstand 1 Min. Dry A.C.	Leakage Distance (in.)	Dry Arc Distance (in.)	Cantilever <sup>②</sup>	Tensile	Compression	
U-SPI5275	7.50	15/25	125	50	60	20.2	7.5	3,000	12,000	30,000	8.20
U-SPI5210	10.00	25/35	150	60	80	31.5	10	2,500	12,000	30,000	10.48
U-SPI5214	14.00	35	200	80	95	50.2	14	2,000	12,000	30,000	14.19

① Reuel Station Post Insulators are recommended for a variety of applications including supports for bus bar, fuse mounting, switch parts and other electrical devices.

② These Insulators have tapered root diameters to attain the rated cantilever strength. The end with the larger base must be oriented toward the mounting surface. The 1/2-13 mounting bolt must be screwed in a minimum of 1" from the surface to obtain the rated cantilever strength (Bottom only). The insulator must be mounted on a flat surface that is at least as wide as the base of the insulator. Cantilever values are measured at 2.50" above the insulator top surface.



**PCORE Electric Co., Inc.**  
200 West Dewey St.  
Goldsboro, NC 27530

Phone: +1.919.734.0460  
Fax: +1.919.734.0902  
www.hubbellpowersystems.com

**Data Sheet DSSPI-02**  
13 November 2015