

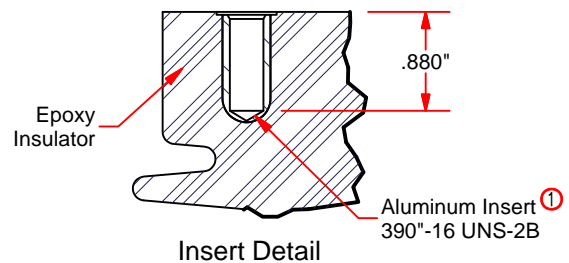
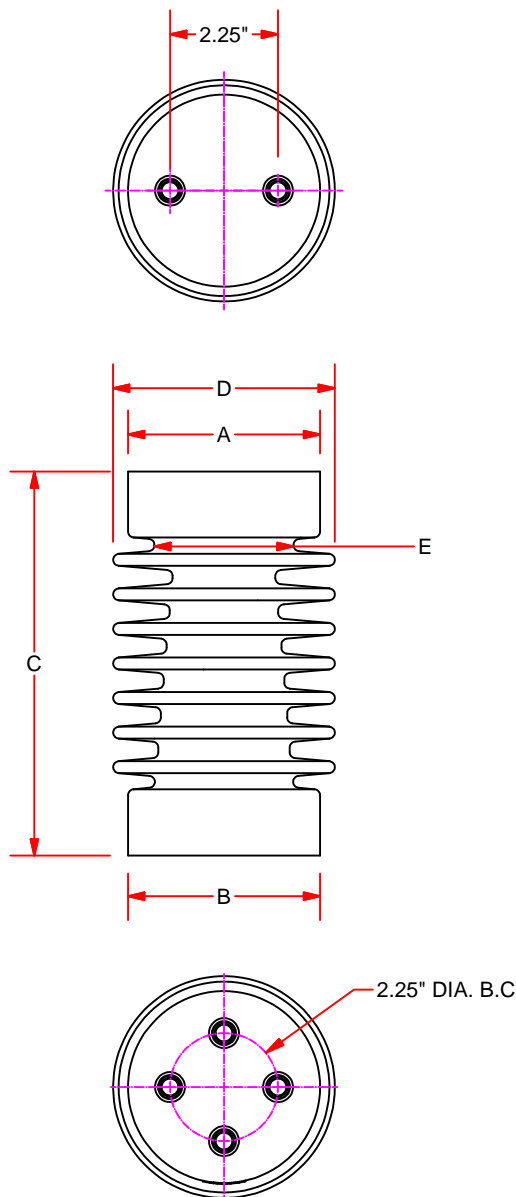
Switch Insulators



Technical Data

Indoor and Outdoor Applications

Cycloaliphatic Epoxy



Part Number	Dimensions (in.)					Electrical Ratings, (kV)						Mechanical Ratings (lbs.)			Approx. Weight (lbs.)
	A	B	C	D	E	Voltage Class(kV)	BIL	Withstand 1 Min. 60 Hz Dry	Withstand 10 Sec. 60 Hz Wet	Leakage Distance (in.)	Dry Arc Distance (in.)	Cantilever ^②	Tensile	Compression	
U-SWI4007	4.0	4.0	7.0	4.25	2.0	15	110	50	45	18.3	7.0	1,200	5,000	20,000	5
U-SWI4008	4.0	4.0	8.0	4.62	2.9	25	125	60	50	22.7	8.0	1,200	5,000	20,000	6
U-SWI4010	4.0	4.0	10.0	4.62	2.9	35	150	70	60	27.0	10.0	800	5,000	20,000	7

① Reuel switch insulators utilize oversized inserts to accommodate 3/8"-16 galvanized hardware.

② These insulators have tapered root diameters. To attain the rated cantilever strength, the end with the larger root diameter must be oriented toward the mounting surface, and the insulator must be mounted on a flat surface that is at least as wide as the base of the insulator. Cantilever values are measured at 2.50" above insulator top surface.



PCORE Electric Co., Inc.
200 West Dewey St.
Goldsboro, NC 27530

Phone: +1.919.734.0460
Fax: +1.919.734.0902
www.hubbellpowersystems.com

Data Sheet DSSWI-01
16 November 2015