

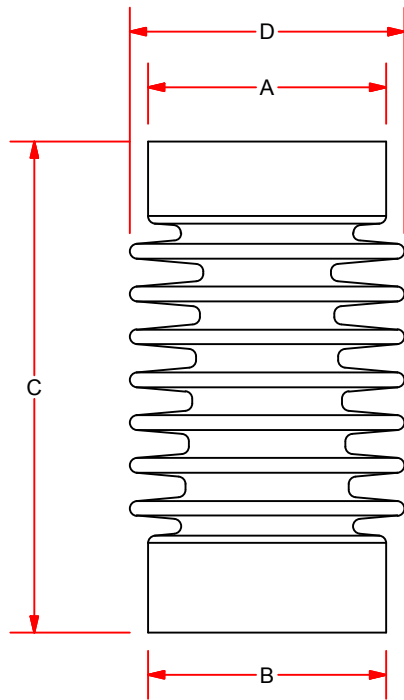
Switch Insulator



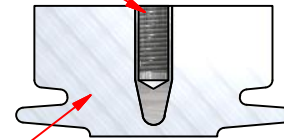
Technical Data

Indoor and Outdoor Applications

Cycloaliphatic Epoxy



1/2-13 Threaded with 1" Full Thread Min. Aluminum Insert

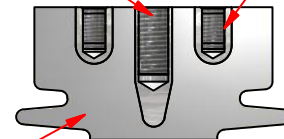


Epoxy Insulator

Insert Configuration - E
Typical Both Ends

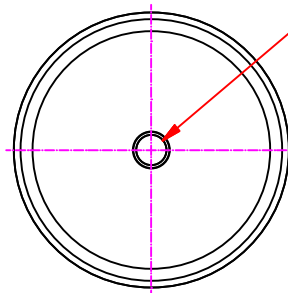
1/2-13 Threaded with 1" Full Thread Min. Aluminum Insert

4X 3/8-16 Threaded with .70" Full Thread Aluminum Insert



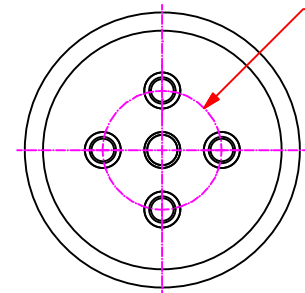
Epoxy Insulator

Insert Configuration - F
Electrically Connected Option
Typical Both Ends



1/2-13 UNC - 2B Threaded Aluminum Insert

Insert Configuration - E
Typical Both Ends



Ø2.00 B.C.

Insert Configuration - F
Electrically Connected Option
Typical Both Ends

Part Number	Dimensions (in.)					Electrical Ratings, (kV)					Mechanical Ratings (lbs.)			Approx. Weight (lbs.)	
	A	B	C	D	Insert Detail	Voltage Class(kV)	BIL	Withstand 1 Min. 60 Hz	Withstand 15 Min. D.C.	Leakage Distance (in.)	Dry Arc Distance (in.)	Cantilever ②	Tensile		Compression
U-SWI4082EE	4.0	4.0	8.25	4.62	E	27	125	60	50	23.45	8.5	1,200	5,000	20,000	6
U-SWI4082ECFF	4.0	4.0	8.25	4.62	F	27	125	60	50	23.45	8.5	1,200	5,000	20,000	6

① Reuel switch insulators are recommended for a variety of applications including supports for bus bar, fuse mounting, switch parts and other electrical devices.

② These insulators have tapered root diameters to attain the rated cantilever strength. The end with the larger root diameter must be oriented toward the mounting surface. The 1/2-13 mounting bolt must be screwed in minimum of 1" from the surface to obtain the rated cantilever strength (Bottom only). The insulator must be mounted on a flat surface that is at least as wide as the base of the insulator. Cantilever values are measured at 2.50" above insulator top surface.



PCORE Electric Co., Inc.
200 West Dewey St.
Goldsboro, NC 27530

Phone: +1.919.734.0460
Fax: +1.919.734.0902
www.hubbellpowersystems.com

Data Sheet DSSWI-4082
17 November 2015