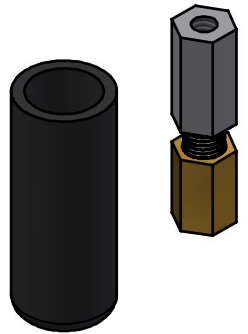
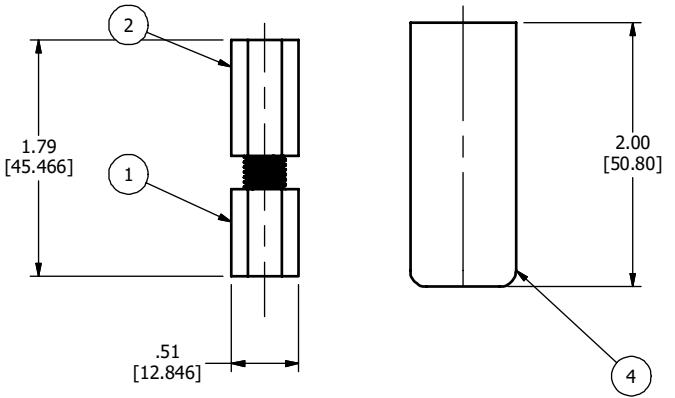
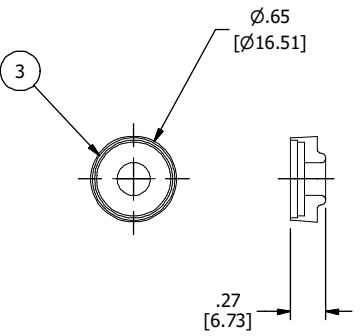
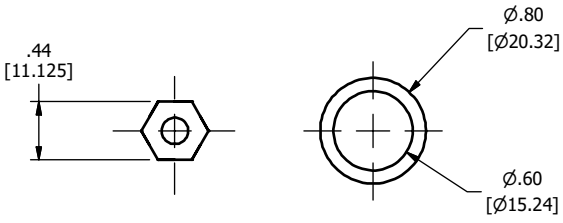


2

1

ITEM	DESCRIPTION	MATERIAL
1	INLINE CONNECTOR HEX	SILICON BRONZE
2	INLINE CONNECTOR BOLT	SILICON BRONZE
3	PLASTIC INSERT SUB-ASSEMBLY	PE
4	BOOT	VINYL
5	SILICONE COMPOUND	SILICONE



3D VIEW

NOTES:
 1. ALL DIMENSIONS FOR REFERENCE ONLY.
 DISTANCE IN. [MM], FORCE LBS. [kN], TORQUE IN. LBS. [N.m], & WEIGHT LBS. [KG].
 2. MATERIAL: REFER TABLE

-	10/9/2023	RGP	SP	SP	 THIRD ANGLE PROJECTION	 HUBBELL POWER SYSTEMS, Inc.	 ELECTRIC MOTION CO., INC.
EC #	DATE	CHANGED BY	CHECKED BY	APPROVED BY			
EC DESCRIPTION:					WEIGHT (lbmass)	TITLE	
					.202	IN LINE CONNECTOR ASSEMBLY	
ADDITIONAL COMMENTS:					CONFIDENTIAL: THIS DRAWING AND ITS CONTENTS ARE CONFIDENTIAL AND THE EXCLUSIVE PROPERTY OF HUBBELL POWER SYSTEMS. NO PUBLICATION, DISTRIBUTION OR COPIES MAY BE MADE WITHOUT THE WRITTEN CONSENT OF HUBBELL POWER SYSTEMS. HUBBELL POWER SYSTEMS UNPUBLISHED ALL RIGHTS RESERVED UNDER THE COPYRIGHT LAWS		
					CATALOG NUMBER:	EM-0366WRL	
SIZE	DWG NO.	PART / ASSY NO.		REV			
B	EM-0366WRL-CC	EM-0366WRL		A			
SCALE:	NTS	DRN BY:	RGP	DATE:	10/9/2023	SHEET 1 OF 1	

2

1