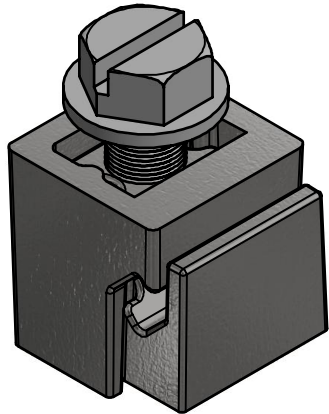
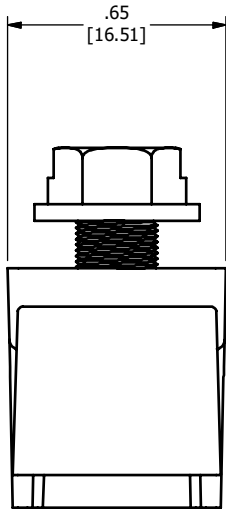
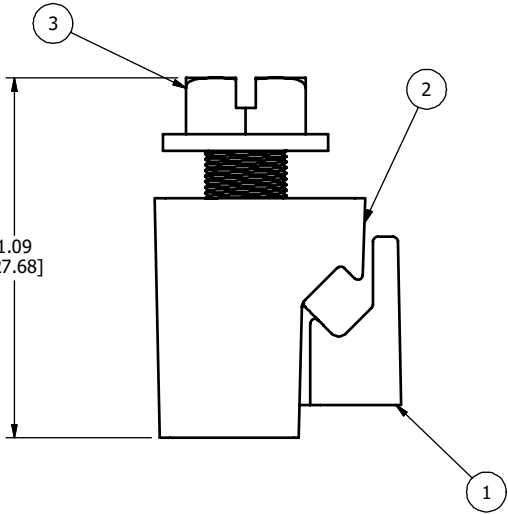
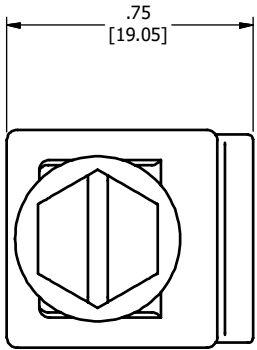


2

1

ITEM	DESCRIPTION	MATERIAL
1	MALE CASTING	SILICON BRONZE
2	FEMALE CASTING	SILICON BRONZE
3	1/4-28 SLOTTED FLANGE BOLT	SILICON BRONZE



3D VIEW

**NOTES:**

- 1. ALL DIMENSIONS FOR REFERENCE ONLY.  
DISTANCE IN. [MM], FORCE LBS. [kN], TORQUE IN. LBS. [N.m], & WEIGHT LBS. [KG].
- 2. MATERIAL: REFER TABLE
- 3. FINISH: TIN PLATED
- 4. CONDUCTOR RANGE: #1/0 AWG (.325) [8.25] AND #6 AWG (.162) [4.11], OR BONDING RIBBON

-	10/9/2023	RGP	SP	SP		<b>HUBBELL POWER SYSTEMS, Inc.</b>
EC #	DATE	CHANGED BY	CHECKED BY	APPROVED BY		
EC DESCRIPTION:					WEIGHT (lbmass)	<b>H1 CONNECTOR ASSEMBLY</b> CATALOG NUMBER: EM-2371 SIZE: B    DWG NO.: EM-2371-CC    PART / ASSY NO.: EM-2371    REV: A SCALE: NTS    DRN BY: RGP    DATE: 10/9/2023    SHEET 1 OF 1
ADDITIONAL COMMENTS:					.097	
<small>CONFIDENTIAL: THIS DRAWING AND ITS CONTENTS ARE CONFIDENTIAL AND THE EXCLUSIVE PROPERTY OF HUBBELL POWER SYSTEMS. NO PUBLICATION, DISTRIBUTION OR COPIES MAY BE MADE WITHOUT THE WRITTEN CONSENT OF HUBBELL POWER SYSTEMS. HUBBELL POWER SYSTEMS UNPUBLISHED ALL RIGHTS RESERVED UNDER THE COPYRIGHT LAWS</small>						

2

1