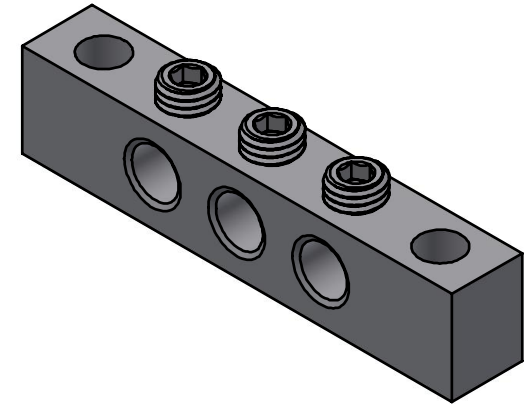


1





ITEM	DESCRIPTION	MATERIAL
1	3 POSITION GROUND BLOCK	BRASS
2	1/4-28 ALLEN SET SCREW	STAINLESS STEEL



3D VIEW

NOTES:

1. ALL DIMENSIONS FOR REFERENCE ONLY.
DISTANCE IN. [MM], FORCE LBS. [kN], TORQUE IN. LBS. [N.m], & WEIGHT LBS. [KG].
2. MATERIAL: REFER TABLE
3. CONDUCTOR RANGE: #32 AWG (DIA. 0.008 [0.2032]) MIN-
#8 AWG (DIA. 0.1285 [3.2639]) MAX

-	10/9/2023	RGP	SP	SP		 HUBBELL POWER SYSTEMS, Inc. 			
EC #	DATE	CHANGED BY	CHECKED BY	APPROVED BY					
EC DESCRIPTION:				WEIGHT (lbmass)		TITLE H1 CONNECTOR ASSEMBLY			
				.126					
ADDITIONAL COMMENTS:				<p>CONFIDENTIAL: THIS DRAWING AND ITS CONTENTS ARE CONFIDENTIAL AND THE EXCLUSIVE PROPERTY OF HUBBELL POWER SYSTEMS. NO PUBLICATION, DISTRIBUTION OR COPIES MAY BE MADE WITHOUT THE WRITTEN CONSENT OF HUBBELL POWER SYSTEMS. HUBBELL POWER SYSTEMS UNPUBLISHED ALL RIGHTS RESERVED UNDER THE COPYRIGHT LAWS</p>		CATALOG NUMBER: EM-4250-3SSO-THA			
						SIZE B	DWG NO. EM-4250-3SSO-THA-CC	PART / ASSY NO. EM-4250-3SSO-THA	REV A
						SCALE: NTS	DRN BY: RGP	DATE: 10/9/2023	SHEET 1 OF 1