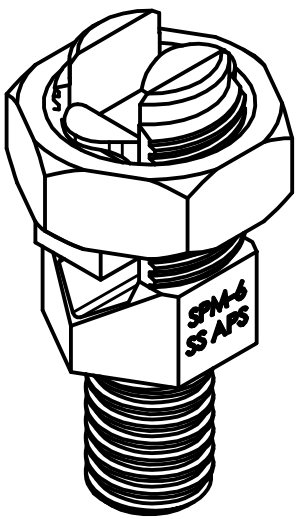
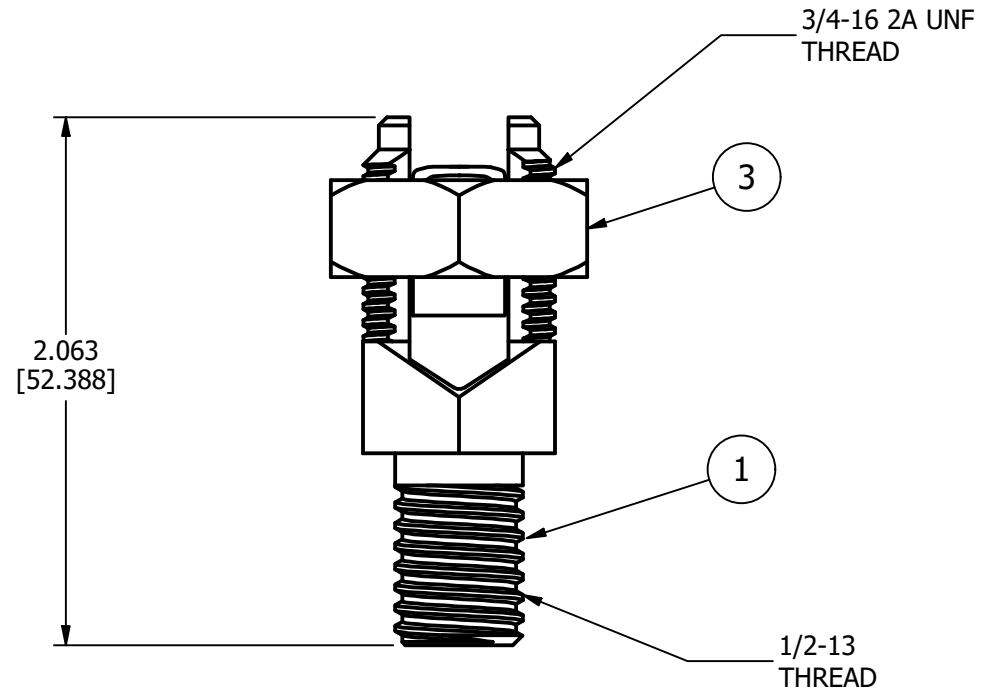
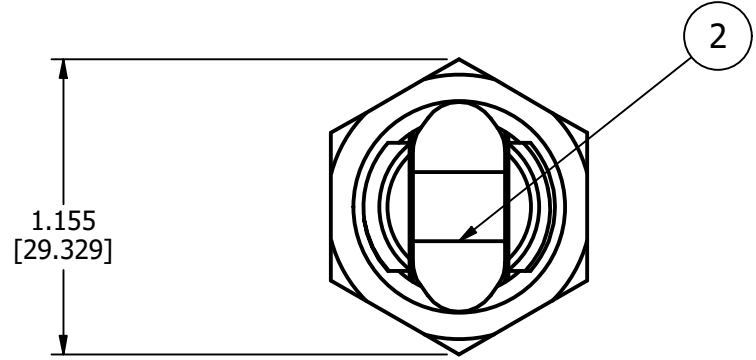


2

1

ITEM	DESCRIPTION	MATERIAL
1	SERVICE POST STUD BODY	STAINLESS STEEL
2	PRESSURE BAR	BRONZE-TIN PLATED
3	3/4-16 NUT	NAVAL BRASS-TIN PLATED



3D VIEW

B

B

A

A

NOTES:

- 1. ALL DIMENSIONS FOR REFERENCE ONLY.
DISTANCE IN. [MM], FORCE LBS. [kN], TORQUE IN. LBS. [N.m], & WEIGHT LBS. [KG].
- 2. MATERIAL: SEE TABLE
- 3. CABLE RANGE: #6 AWG (DIA. 0.162 [4.114]) MIN -
1/0 STR (DIA. 0.3249 [8.252]) MAX

-	9/22/2023	PREM	SP	SP	
EC #	DATE	CHANGED BY	CHECKED BY	APPROVED BY	
EC DESCRIPTION:				WEIGHT (lbmass)	 THIRD ANGLE PROJECTION
				2.063	
ADDITIONAL COMMENTS:				CONFIDENTIAL: THIS DRAWING AND ITS CONTENTS ARE CONFIDENTIAL AND THE EXCLUSIVE PROPERTY OF HUBBELL POWER SYSTEMS. NO PUBLICATION, DISTRIBUTION OR COPIES MAY BE MADE WITHOUT THE WRITTEN CONSENT OF HUBBELL POWER SYSTEMS. HUBBELL POWER SYSTEMS UNPUBLISHED ALL RIGHTS RESERVED UNDER THE COPYRIGHT LAWS	

HUBBELL POWER SYSTEMS, Inc.			
<small>POWER SYSTEMS, Inc. ELECTRIC MOTION CO., INC.</small>			
TITLE			
SERVICE POST CONNECTOR			
CATALOG NUMBER: EM-SPM-6-SS-APS			
SIZE	DWG NO.	PART / ASSY NO.	REV
B	EM-SPM-6-SS-APS-CC	EM-SPM-6-SS-APS	A
SCALE: NTS	DRN BY: PREM	DATE: 9/29/2023	SHEET 1 OF 1

2

1