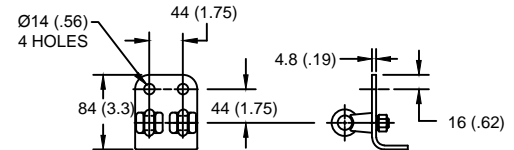


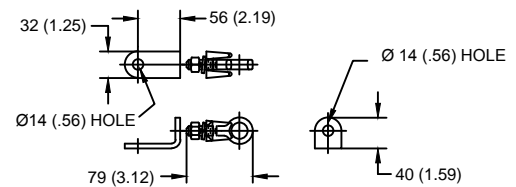
#### LINE TERMINAL DETAIL



HDG 4-HOLE TERMINAL PAD, PART No. 274914-4002  
TWO HDG TERMINALS, PART No. 271414-3001  
SUITABLE FOR COPPER OR ALUMINUM CONDUCTOR SIZE  
Ø 7 (.25) - Ø 21 (.81)  
25 - 240 sq mm  
AWG#4 - 500 MCM

#### GROUND TERMINAL DETAIL

HDG MOUNTING HARDWARE INCLUDED  
1/2 X 3-1/4 IN LG, LW & HEX NUT (SET OF 3)



HDG TERMINAL BRACKET, PART No. 89606-4001  
ONE HDG TERMINAL, PART No. 271414-3001  
SUITABLE FOR COPPER OR ALUMINUM CONDUCTOR SIZE  
Ø 7 (.25) - Ø 21 (.81)  
25 - 240 sq mm  
AWG#4 - 500 MCM  
Ø = DIAMETER  
HDG = HOT DIP GALVANIZED

#### CHARACTERISTICS

RATED VOLTAGE (Ur)	10 kVrms
MCOV (Uc)	8.4 kVrms
MASS	6.8 kg (15 lb)
COG ABOVE BASE	150 (5.9)
CREEPAGE DISTANCE	765 (30.1)
STRIKE DISTANCE	221 (8.7)
LIGHTNING IMP W/S	127 kVpk
SWITCHING IMP WET W/S	106 kVpk
POWER FREQ WET W/S	63 kVrms
TOV 1s NO PRIOR DUTY	11.9 kVrms
TOV 10s NO PRIOR DUTY	11.4 kVrms
TOV 1s W/PRIOR DUTY	11.4 kVrms
TOV 10s W/PRIOR DUTY	10.7 kVrms

#### CANTILEVER FORCE

MAXIMUM CONTINUOUS	2974 N (669 lbf)
ULTIMATE (max pk)	5947 N (1337 lbf)

#### RECOMMENDED CLEARANCE (METAL - METAL)

PHASE TO GROUND	25.4 (1)
PHASE TO PHASE	50.8 (2)

#### NOTES:

1. DIMENSIONS IN millimeters(inches) SUBJECT TO ±3% TOLERANCE
2. CLEARANCE AND INSULATION W/S VOLTAGE APPLY AT SEA LEVEL
3. ARRESTER SUITABLE FOR OPERATION AT ALTITUDES UP TO 4380 m (14370 ft)
4. PACKAGED IN A WOOD CRATE.

.5μSEC 10kA IR kV	SWITCHING SURGE IR kV		MAXIMUM 8/20 DISCHARGE VOLTAGE - kV AT					
	500 A	1 KA	1.5 kA	3.0 kA	5 kA	10 kA	20 kA	40 kA
29.4	19.8	20.6	21.1	22.2	23.3	25.0	27.0	30.8

IEEE C62.11

STATION-CLASS  
SURGE ARRESTER

Program Revision  
2015.07.30.08.09.10

REV DATE  
05/03/11

CONFIDENTIAL: THIS DRAWING AND ITS  
CONTENTS ARE CONFIDENTIAL AND THE  
EXCLUSIVE PROPERTY OF HUBBELL  
POWER SYSTEMS. NO PUBLICATION,  
DISTRIBUTION OR COPIES MAY BE MADE  
WITHOUT THE WRITTEN CONSENT OF  
HUBBELL POWER SYSTEMS.  
HUBBELL POWER SYSTEMS UNPUBLISHED  
ALL RIGHTS RESERVED UNDER THE  
COPYRIGHT LAWS.

TITLE

**EVP ARRESTER  
8.4 KV MCOV**

SIZE	DWG NO.	CAT / PART / ASSY NO.	REV
S	191054453	EVP0009003003	1
DO NOT SCALE THIS DRAWING	DRN BY	NON	DATE 05/03/11
			SHEET 1 OF 1



**HUBBELL POWER SYSTEMS**