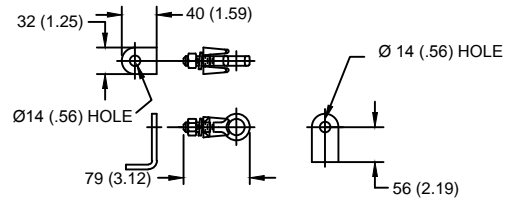
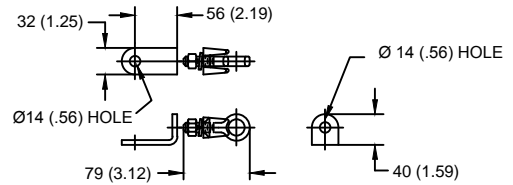


**LINE TERMINAL DETAIL**



HDG TERMINAL BRACKET, PART No. 89606-4001  
 ONE HDG TERMINAL, PART No. 271414-3001  
 SUITABLE FOR COPPER OR ALUMINUM CONDUCTOR SIZE  
 Ø 7 (.25) - Ø 21 (.81)  
 25 - 240 sq mm  
 AWG#4 - 500 MCM

**GROUND TERMINAL DETAIL**



HDG TERMINAL BRACKET, PART No. 89606-4001  
 ONE HDG TERMINAL, PART No. 271414-3001  
 SUITABLE FOR COPPER OR ALUMINUM CONDUCTOR SIZE  
 Ø 7 (.25) - Ø 21 (.81)  
 25 - 240 sq mm  
 AWG#4 - 500 MCM

Ø = DIAMETER  
 HDG = HOT DIP GALVANIZED

CHARACTERISTICS	
RATED VOLTAGE (Ur)	12 kVrms
MCOV (Uc)	10.2 kVrms
MASS	6.8 kg (15 lb)
COG ABOVE BASE	150 (5.9)
CREEPAGE DISTANCE	765 (30.1)
STRIKE DISTANCE	221 (8.7)
LIGHTNING IMP W/S	127 kVpk
SWITCHING IMP WET W/S	106 kVpk
POWER FREQ WET W/S	63 kVrms
TOV 1s NO PRIOR DUTY	14.5 kVrms
TOV 10s NO PRIOR DUTY	13.9 kVrms
TOV 1s W/PRIOR DUTY	13.8 kVrms
TOV 10s W/PRIOR DUTY	13 kVrms

CANTILEVER FORCE	
MAXIMUM CONTINUOUS	2974 N (669 lbf)
ULTIMATE (max pk)	5947 N (1337 lbf)

RECOMMENDED CLEARANCE (METAL - METAL)	
PHASE TO GROUND	25.4 (1)
PHASE TO PHASE	50.8 (2)

- NOTES:  
 1. DIMENSIONS IN millimeters(inches) SUBJECT TO ±3% TOLERANCE  
 2. CLEARANCE AND INSULATION W/S VOLTAGE APPLY AT SEA LEVEL  
 3. ARRESTER SUITABLE FOR OPERATION AT ALTITUDES UP TO 4380 m (14370 ft)  
 4. PACKAGED IN A CORRUGATED BOX.

.5µSEC 10kA IR kV	SWITCHING SURGE IR kV		MAXIMUM 8/20 DISCHARGE VOLTAGE - kV AT					
	500 A	1 KA	1.5 kA	3.0 kA	5 kA	10 kA	20 kA	40 kA
35.1	24.0	25.0	25.6	26.9	28.2	30.3	32.8	37.4

IEEE C62.11  
 STATION-CLASS  
 SURGE ARRESTER  
 Program Revision  
 2015.07.30.08.09.10

CONFIDENTIAL: THIS DRAWING AND ITS CONTENTS ARE CONFIDENTIAL AND THE EXCLUSIVE PROPERTY OF HUBBELL POWER SYSTEMS. NO PUBLICATION, DISTRIBUTION OR COPIES MAY BE MADE WITHOUT THE WRITTEN CONSENT OF HUBBELL POWER SYSTEMS. HUBBELL POWER SYSTEMS UNPUBLISHED ALL RIGHTS RESERVED UNDER THE COPYRIGHT LAWS.

TITLE				<b>EVP ARRESTER 10.2 KV MCOV</b>			
SIZE	DWG NO.	CAT / PART / ASSY NO.		REV			
S	191054461	EVP0010003002		1			
DO NOT SCALE THIS DRAWING		DRN BY	NON	DATE	05/03/11	SHEET 1 OF 1	

