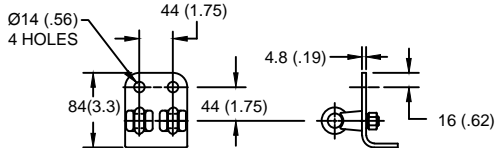
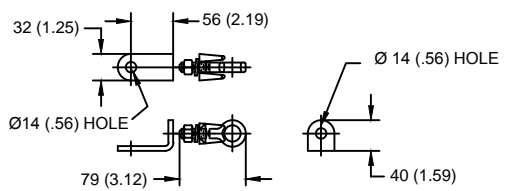


LINE TERMINAL DETAIL



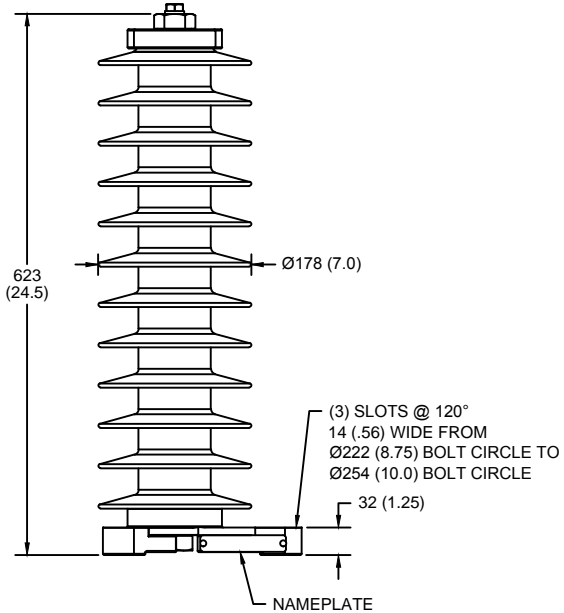
HDG 4-HOLE TERMINAL PAD, PART No. 274914-4002
 TWO HDG TERMINALS, PART No. 271414-3001
 SUITABLE FOR COPPER OR ALUMINUM CONDUCTOR SIZE
 Ø 7 (.25) - Ø 21 (.81)
 25 - 240 sq mm
 AWG#4 - 500 MCM

GROUND TERMINAL DETAIL



HDG TERMINAL BRACKET, PART No. 89606-4001
 ONE HDG TERMINAL, PART No. 271414-3001
 SUITABLE FOR COPPER OR ALUMINUM CONDUCTOR SIZE
 Ø 7 (.25) - Ø 21 (.81)
 25 - 240 sq mm
 AWG#4 - 500 MCM

Ø = DIAMETER
 HDG = HOT DIP GALVANIZED



CHARACTERISTICS	
RATED VOLTAGE (Ur)	27 kVrms
MCOV (Uc)	22 kVrms
MASS	14.2 kg (31.2 lb)
COG ABOVE BASE	312 (12.3)
CREEPAGE DISTANCE	1562 (61.5)
STRIKE DISTANCE	546 (21.5)
LIGHTNING IMP W/S	313 kVpk
SWITCHING IMP WET W/S	263 kVpk
POWER FREQ WET W/S	148 kVrms
TOV 1s NO PRIOR DUTY	31.3 kVrms
TOV 10s NO PRIOR DUTY	29.9 kVrms
TOV 1s W/PRIOR DUTY	29.8 kVrms
TOV 10s W/PRIOR DUTY	28.1 kVrms

CANTILEVER FORCE	
MAXIMUM CONTINUOUS	1601 N (360 lbf)
ULTIMATE (max pk)	3201 N (720 lbf)

RECOMMENDED CLEARANCE (METAL - METAL)	
PHASE TO GROUND	95.6 (3.8)
PHASE TO PHASE	121.7 (4.8)

- NOTES:
 1. DIMENSIONS IN millimeters(inches) SUBJECT TO ±3% TOLERANCE
 2. CLEARANCE AND INSULATION W/S VOLTAGE APPLY AT SEA LEVEL
 3. ARRESTER SUITABLE FOR OPERATION AT ALTITUDES UP TO 4380 m (14370 ft)
 4. PACKAGED IN A CORRUGATED BOX.

.5µSEC 10kA IR kV	SWITCHING SURGE IR kV		MAXIMUM 8/20 DISCHARGE VOLTAGE - kV AT					
	500 A	1 KA	1.5 kA	3.0 kA	5 kA	10 kA	20 kA	40 kA
73.6	51.8	54.0	55.3	58.1	60.9	65.4	70.7	80.6

IEEE C62.11
 STATION-CLASS
 SURGE ARRESTER
 Program Revision
 2015.07.30.08.09.10

CONFIDENTIAL: THIS DRAWING AND ITS CONTENTS ARE CONFIDENTIAL AND THE EXCLUSIVE PROPERTY OF HUBBELL POWER SYSTEMS. NO PUBLICATION, DISTRIBUTION OR COPIES MAY BE MADE WITHOUT THE WRITTEN CONSENT OF HUBBELL POWER SYSTEMS. HUBBELL POWER SYSTEMS UNPUBLISHED ALL RIGHTS RESERVED UNDER THE COPYRIGHT LAWS.

TITLE
**EVP ARRESTER
 22 KV MCOV**

SIZE S	DWG NO. 19106120	CAT / PART / ASSY NO. EVP0022203001	REV 1
DO NOT SCALE THIS DRAWING	DRN BY NON	DATE 05/03/11	SHEET 1 OF 1

REV DATE
 05/03/11

