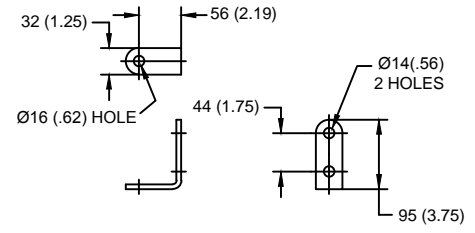
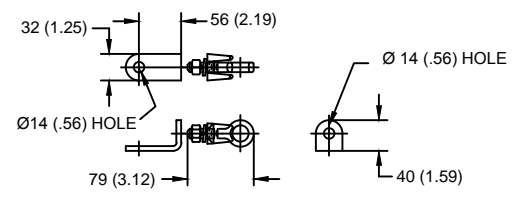


**LINE TERMINAL DETAIL**



HDG 2-HOLE TERMINAL PAD, PART No. 271986-4002

**GROUND TERMINAL DETAIL**



HDG TERMINAL BRACKET, PART No. 89606-4001  
 ONE HDG TERMINAL, PART No. 271414-3001  
 SUITABLE FOR COPPER OR ALUMINUM CONDUCTOR SIZE  
 Ø 7 (.25) - Ø 21 (.81)  
 25 - 240 sq mm  
 AWG#4 - 500 MCM  
 Ø = DIAMETER  
 HDG = HOT DIP GALVANIZED

CHARACTERISTICS	
RATED VOLTAGE (Ur)	36 kVrms
MCOV (Uc)	29 kVrms
MASS	12.1 kg (26.6 lb)
COG ABOVE BASE	267 (10.5)
CREEPAGE DISTANCE	1294 (50.9)
STRIKE DISTANCE	455 (17.9)
LIGHTNING IMP W/S	261 kVpk
SWITCHING IMP WET W/S	219 kVpk
POWER FREQ WET W/S	125 kVrms
TOV 1s NO PRIOR DUTY	41.4 kVrms
TOV 10s NO PRIOR DUTY	39.6 kVrms
TOV 1s W/PRIOR DUTY	39.5 kVrms
TOV 10s W/PRIOR DUTY	37.3 kVrms

CANTILEVER FORCE	
MAXIMUM CONTINUOUS	1843 N (414 lbf)
ULTIMATE (max pk)	3687 N (829 lbf)

RECOMMENDED CLEARANCE (METAL - METAL)	
PHASE TO GROUND	139.6 (5.5)
PHASE TO PHASE	171.5 (6.8)

- NOTES:  
 1. DIMENSIONS IN millimeters(inches) SUBJECT TO ±3% TOLERANCE  
 2. CLEARANCE AND INSULATION W/S VOLTAGE APPLY AT SEA LEVEL  
 3. ARRESTER SUITABLE FOR OPERATION AT ALTITUDES UP TO 4380 m (14370 ft)  
 4. PACKAGED IN A CORRUGATED BOX.

.5µSEC 10kA IR kV	SWITCHING SURGE IR kV		MAXIMUM 8/20 DISCHARGE VOLTAGE - kV AT					
	500 A	1 KA	1.5 kA	3.0 kA	5 kA	10 kA	20 kA	40 kA
97.0	68.6	71.5	73.2	76.9	80.7	86.5	93.6	107

<b>IEEE C62.11</b> STATION-CLASS SURGE ARRESTER  Program Revision 2015.07.30.08.09.10  REV DATE 05/03/11	CONFIDENTIAL: THIS DRAWING AND ITS CONTENTS ARE CONFIDENTIAL AND THE EXCLUSIVE PROPERTY OF HUBBELL POWER SYSTEMS. NO PUBLICATION, DISTRIBUTION OR COPIES MAY BE MADE WITHOUT THE WRITTEN CONSENT OF HUBBELL POWER SYSTEMS. HUBBELL POWER SYSTEMS UNPUBLISHED ALL RIGHTS RESERVED UNDER THE COPYRIGHT LAWS.	<b>TITLE</b> <b>EVP ARRESTER</b> <b>29 KV MCOV</b>			
		SIZE <b>S</b>	DWG NO. <b>19106116</b>	CAT / PART / ASSY NO. <b>EVP0029003009</b>	REV <b>1</b>
		DO NOT SCALE THIS DRAWING	DRN BY <b>NON</b>	DATE <b>05/03/11</b>	SHEET <b>1 OF 1</b>

