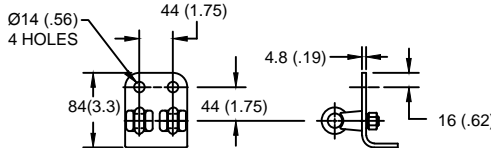
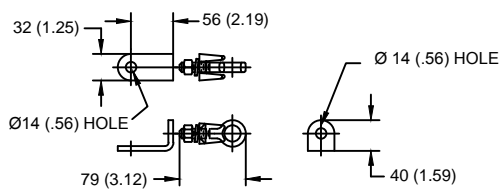


**LINE TERMINAL DETAIL**

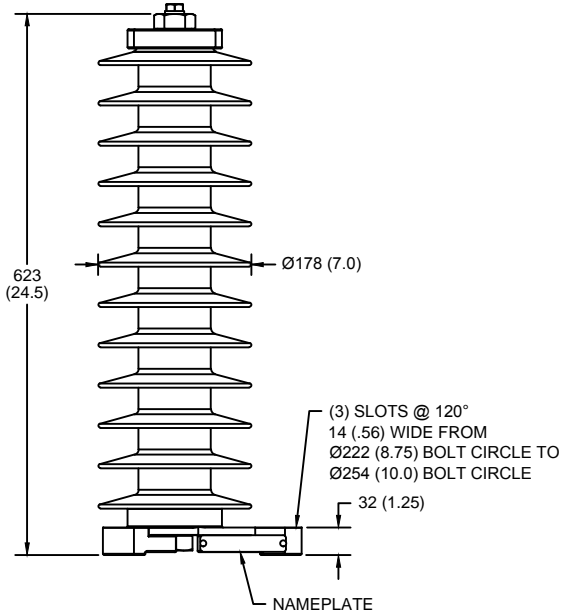


HDG 4-HOLE TERMINAL PAD, PART No. 274914-4002  
 TWO HDG TERMINALS, PART No. 271414-3001  
 SUITABLE FOR COPPER OR ALUMINUM CONDUCTOR SIZE  
 Ø 7 (.25) - Ø 21 (.81)  
 25 - 240 sq mm  
 AWG#4 - 500 MCM

**GROUND TERMINAL DETAIL**



HDG TERMINAL BRACKET, PART No. 89606-4001  
 ONE HDG TERMINAL, PART No. 271414-3001  
 SUITABLE FOR COPPER OR ALUMINUM CONDUCTOR SIZE  
 Ø 7 (.25) - Ø 21 (.81)  
 25 - 240 sq mm  
 AWG#4 - 500 MCM  
 Ø = DIAMETER  
 HDG = HOT DIP GALVANIZED



CHARACTERISTICS	
RATED VOLTAGE (Ur)	39 kVrms
MCOV (Uc)	31.5 kVrms
MASS	14.2 kg (31.2 lb)
COG ABOVE BASE	312 (12.3)
CREEPAGE DISTANCE	1562 (61.5)
STRIKE DISTANCE	546 (21.5)
LIGHTNING IMP W/S	313 kVpk
SWITCHING IMP WET W/S	263 kVpk
POWER FREQ WET W/S	148 kVrms
TOV 1s NO PRIOR DUTY	44.8 kVrms
TOV 10s NO PRIOR DUTY	42.9 kVrms
TOV 1s W/PRIOR DUTY	42.8 kVrms
TOV 10s W/PRIOR DUTY	40.4 kVrms

CANTILEVER FORCE	
MAXIMUM CONTINUOUS	1601 N (360 lbf)
ULTIMATE (max pk)	3201 N (720 lbf)

RECOMMENDED CLEARANCE (METAL - METAL)	
PHASE TO GROUND	154.6 (6.1)
PHASE TO PHASE	188.4 (7.4)

- NOTES:  
 1. DIMENSIONS IN millimeters(inches) SUBJECT TO ±3% TOLERANCE  
 2. CLEARANCE AND INSULATION W/S VOLTAGE APPLY AT SEA LEVEL  
 3. ARRESTER SUITABLE FOR OPERATION AT ALTITUDES UP TO 4380 m (14370 ft)  
 4. PACKAGED IN A CORRUGATED BOX.

.5µSEC 10kA IR kV	SWITCHING SURGE IR kV		MAXIMUM 8/20 DISCHARGE VOLTAGE - kV AT					
	500 A	1 KA	1.5 kA	3.0 kA	5 kA	10 kA	20 kA	40 kA
105	74.4	77.4	79.3	83.4	87.4	93.8	101	116

IEEE C62.11  
 STATION-CLASS  
 SURGE ARRESTER  
 Program Revision  
 2015.07.30.08.09.10

CONFIDENTIAL: THIS DRAWING AND ITS CONTENTS ARE CONFIDENTIAL AND THE EXCLUSIVE PROPERTY OF HUBBELL POWER SYSTEMS. NO PUBLICATION, DISTRIBUTION OR COPIES MAY BE MADE WITHOUT THE WRITTEN CONSENT OF HUBBELL POWER SYSTEMS. HUBBELL POWER SYSTEMS UNPUBLISHED ALL RIGHTS RESERVED UNDER THE COPYRIGHT LAWS.

TITLE  
**EVP ARRESTER  
 31.5 KV MCOV**

SIZE	DWG NO.	CAT / PART / ASSY NO.	REV
S	19106113	EVP0031103001	1
DO NOT SCALE THIS DRAWING	DRN BY	DATE	SHEET
	NON	05/03/11	1 OF 1

