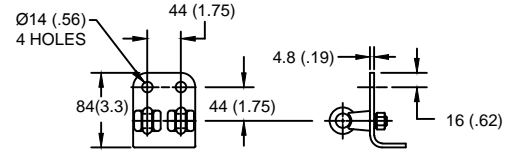
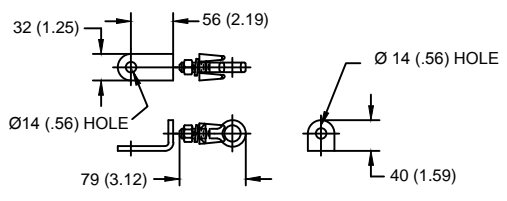


LINE TERMINAL DETAIL



HDG 4-HOLE TERMINAL PAD, PART No. 274914-4002
 TWO HDG TERMINALS, PART No. 271414-3001
 SUITABLE FOR COPPER OR ALUMINUM CONDUCTOR SIZE
 Ø 7 (.25) - Ø 21 (.81)
 25 - 240 sq mm
 AWG#4 - 500 MCM

GROUND TERMINAL DETAIL



HDG TERMINAL BRACKET, PART No. 89606-4001
 ONE HDG TERMINAL, PART No. 271414-3001
 SUITABLE FOR COPPER OR ALUMINUM CONDUCTOR SIZE
 Ø 7 (.25) - Ø 21 (.81)
 25 - 240 sq mm
 AWG#4 - 500 MCM
 Ø = DIAMETER
 HDG = HOT DIP GALVANIZED

CHARACTERISTICS	
RATED VOLTAGE (Ur)	228 kVrms
MCOV (Uc)	180 kVrms
MASS	60.1 kg (133 lb)
COG ABOVE BASE	1286 (50.6)
CREEPAGE DISTANCE	6278 (247.2)
STRIKE DISTANCE	2032 (80)
LIGHTNING IMP W/S	1166 kVpk
SWITCHING IMP WET W/S	977 kVpk
POWER FREQ WET W/S	436 kVrms
TOV 1s NO PRIOR DUTY	262 kVrms
TOV 10s NO PRIOR DUTY	251 kVrms
TOV 1s W/PRIOR DUTY	250 kVrms
TOV 10s W/PRIOR DUTY	236 kVrms

CANTILEVER FORCE	
MAXIMUM CONTINUOUS	228 N (51 lbf)
ULTIMATE (max pk)	910 N (205 lbf)

RECOMMENDED CLEARANCE (METAL - METAL)	
PHASE TO GROUND	1099 (43.3)
PHASE TO PHASE	1256 (49.4)

- NOTES:
 1. DIMENSIONS IN millimeters(inches) SUBJECT TO ±3% TOLERANCE
 2. CLEARANCE AND INSULATION W/S VOLTAGE APPLY AT SEA LEVEL
 3. ARRESTER SUITABLE FOR OPERATION AT ALTITUDES UP TO 4380 m (14370 ft)
 4. PACKAGED IN A WOOD CRATE.

.5µSEC 10kA IR kV	SWITCHING SURGE IR kV		MAXIMUM 8/20 DISCHARGE VOLTAGE - kV AT					
	500 A	1 KA	1.5 kA	3.0 kA	5 kA	10 kA	20 kA	40 kA
605	435	453	464	487	511	548	593	676

IEEE C62.11
 STATION-CLASS
 SURGE ARRESTER
 Program Revision
 2015.07.30.08.09.10
 REV DATE 05/03/11

CONFIDENTIAL: THIS DRAWING AND ITS CONTENTS ARE CONFIDENTIAL AND THE EXCLUSIVE PROPERTY OF HUBBELL POWER SYSTEMS. NO PUBLICATION, DISTRIBUTION OR COPIES MAY BE MADE WITHOUT THE WRITTEN CONSENT OF HUBBELL POWER SYSTEMS. HUBBELL POWER SYSTEMS UNPUBLISHED ALL RIGHTS RESERVED UNDER THE COPYRIGHT LAWS.

TITLE
**EVP ARRESTER
 180 KV MCOV**

SIZE S	DWG NO. 1910669	CAT / PART / ASSY NO. EVP2180003001	REV 1
DO NOT SCALE THIS DRAWING	DRN BY NON	DATE 05/03/11	SHEET 1 OF 1

