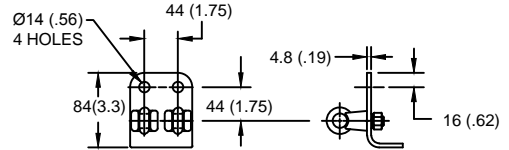
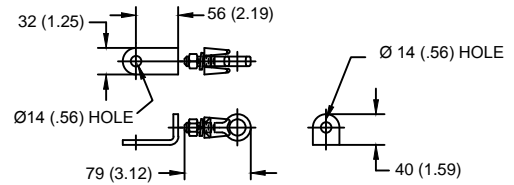


LINE TERMINAL DETAIL



HDG 4-HOLE TERMINAL PAD, PART No. 274914-4002
 TWO TIN-PLATED TERMINALS, PART No. TLS42TP
 SUITABLE FOR COPPER OR ALUMINUM CONDUCTOR SIZE
 Ø 4.1 (.16) - Ø 13 (.50)
 13 - 127 sq mm
 AWG #6 - 250 MCM

GROUND TERMINAL DETAIL



HDG TERMINAL BRACKET, PART No. 89606-4001
 ONE HDG TERMINAL, PART No. 271414-3001
 SUITABLE FOR COPPER OR ALUMINUM CONDUCTOR SIZE
 Ø 7 (.25) - Ø 21 (.81)
 25 - 240 sq mm
 AWG#4 - 500 MCM
 Ø = DIAMETER
 HDG = HOT DIP GALVANIZED

| CHARACTERISTICS | |
|-----------------------|-------------------|
| RATED VOLTAGE (Ur) | 60 kVrms |
| MCOV (Uc) | 48 kVrms |
| MASS | 16.3 kg (35.9 lb) |
| COG ABOVE BASE | 358 (14.1) |
| CREEPAGE DISTANCE | 1827 (71.9) |
| STRIKE DISTANCE | 640 (25.2) |
| LIGHTNING IMP W/S | 367 kVpk |
| SWITCHING IMP WET W/S | 308 kVpk |
| POWER FREQ WET W/S | 172 kVrms |
| TOV 1s NO PRIOR DUTY | 69 kVrms |
| TOV 10s NO PRIOR DUTY | 66 kVrms |
| TOV 1s W/PRIOR DUTY | 65.8 kVrms |
| TOV 10s W/PRIOR DUTY | 62.1 kVrms |

| CANTILEVER FORCE | |
|--------------------|------------------|
| MAXIMUM CONTINUOUS | 1414 N (318 lbf) |
| ULTIMATE (max pk) | 2829 N (636 lbf) |

| RECOMMENDED CLEARANCE (METAL - METAL) | |
|---------------------------------------|--------------|
| PHASE TO GROUND | 259.5 (10.2) |
| PHASE TO PHASE | 307 (12.1) |

- NOTES:
 1. DIMENSIONS IN millimeters(inches) SUBJECT TO ±3% TOLERANCE
 2. CLEARANCE AND INSULATION W/S VOLTAGE APPLY AT SEA LEVEL
 3. ARRESTER SUITABLE FOR OPERATION AT ALTITUDES UP TO 4380 m (14370 ft)
 4. PACKAGED IN A CORRUGATED BOX.

| .5µSEC 10kA IR kV | SWITCHING SURGE IR kV | | MAXIMUM 8/20 DISCHARGE VOLTAGE - kV AT | | | | | |
|----------------------|-----------------------|------|--|--------|------|-------|-------|-------|
| | 500 A | 1 KA | 1.5 kA | 3.0 kA | 5 kA | 10 kA | 20 kA | 40 kA |
| 160 | 115 | 120 | 123 | 129 | 135 | 145 | 157 | 179 |

IEEE C62.11
 STATION-CLASS
 SURGE ARRESTER
 Program Revision
 2015.07.30.08.09.10

CONFIDENTIAL: THIS DRAWING AND ITS CONTENTS ARE CONFIDENTIAL AND THE EXCLUSIVE PROPERTY OF HUBBELL POWER SYSTEMS. NO PUBLICATION, DISTRIBUTION OR COPIES MAY BE MADE WITHOUT THE WRITTEN CONSENT OF HUBBELL POWER SYSTEMS. HUBBELL POWER SYSTEMS UNPUBLISHED ALL RIGHTS RESERVED UNDER THE COPYRIGHT LAWS.

| | | | | | | | |
|---------------------------|----------|-----------------------|-----|------------------------------------|----------|--------------|--|
| TITLE | | | | EVP ARRESTER 48 KV MCOV | | | |
| SIZE | DWG NO. | CAT / PART / ASSY NO. | | REV | | | |
| S | 19106107 | EVP0048003014 | | 1 | | | |
| DO NOT SCALE THIS DRAWING | | DRN BY | NON | DATE | 05/03/11 | SHEET 1 OF 1 | |

