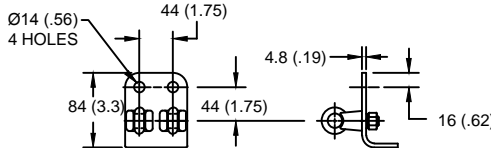
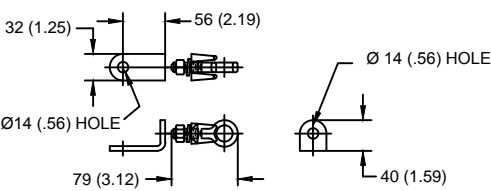


LINE TERMINAL DETAIL

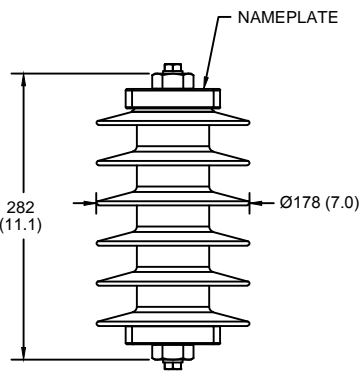


HDG 4-HOLE TERMINAL PAD, PART No. 274914-4002
 TWO HDG TERMINALS, PART No. 271414-3001
 SUITABLE FOR COPPER OR ALUMINUM CONDUCTOR SIZE
 Ø 7 (.25) - Ø 21 (.81)
 25 - 240 sq mm
 AWG#4 - 500 MCM

GROUND TERMINAL DETAIL



HDG TERMINAL BRACKET, PART No. 89606-4001
 ONE HDG TERMINAL, PART No. 271414-3001
 SUITABLE FOR COPPER OR ALUMINUM CONDUCTOR SIZE
 Ø 7 (.25) - Ø 21 (.81)
 25 - 240 sq mm
 AWG#4 - 500 MCM
 Ø = DIAMETER
 HDG = HOT DIP GALVANIZED



CHARACTERISTICS	
RATED VOLTAGE (Ur)	12 kVrms
MCOV (Uc)	10.2 kVrms
MASS	4 kg (8.8 lb)
COG ABOVE BASE	150 (5.9)
CREEPAGE DISTANCE	765 (30.1)
STRIKE DISTANCE	221 (8.7)
LIGHTNING IMP W/S	127 kVpk
SWITCHING IMP WET W/S	106 kVpk
POWER FREQ WET W/S	63 kVrms
TOV 1s NO PRIOR DUTY	14.5 kVrms
TOV 10s NO PRIOR DUTY	13.9 kVrms
TOV 1s W/PRIOR DUTY	13.8 kVrms
TOV 10s W/PRIOR DUTY	13 kVrms

CANTILEVER FORCE	
MAXIMUM CONTINUOUS	929 N (209 lbf)
ULTIMATE (max pk)	1858 N (418 lbf)

RECOMMENDED CLEARANCE (METAL - METAL)	
PHASE TO GROUND	25.4 (1)
PHASE TO PHASE	50.8 (2)

- NOTES:
 1. DIMENSIONS IN millimeters(inches) SUBJECT TO ±3% TOLERANCE
 2. CLEARANCE AND INSULATION W/S VOLTAGE APPLY AT SEA LEVEL
 3. ARRESTER SUITABLE FOR OPERATION AT ALTITUDES UP TO 4380 m (14370 ft)
 4. PACKAGED IN A WOOD CRATE.

.5µSEC 10kA IR kV	SWITCHING SURGE IR kV		MAXIMUM 8/20 DISCHARGE VOLTAGE - kV AT					
	500 A	1 KA	1.5 kA	3.0 kA	5 kA	10 kA	20 kA	40 kA
35.1	24.0	25.0	25.6	26.9	28.2	30.3	32.8	37.4

IEEE C62.11
 STATION-CLASS
 SURGE ARRESTER
 Program Revision
 2015.07.30.08.09.10

CONFIDENTIAL: THIS DRAWING AND ITS CONTENTS ARE CONFIDENTIAL AND THE EXCLUSIVE PROPERTY OF HUBBELL POWER SYSTEMS. NO PUBLICATION, DISTRIBUTION OR COPIES MAY BE MADE WITHOUT THE WRITTEN CONSENT OF HUBBELL POWER SYSTEMS. HUBBELL POWER SYSTEMS UNPUBLISHED ALL RIGHTS RESERVED UNDER THE COPYRIGHT LAWS.

TITLE
**EVP ARRESTER
 10.2 KV MCOV**

SIZE S	DWG NO. 191064567	CAT / PART / ASSY NO. EVP1010003010	REV 1
DO NOT SCALE THIS DRAWING	DRN BY NON	DATE 05/03/11	SHEET 1 OF 1

REV DATE
05/03/11

