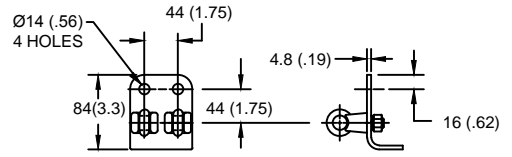
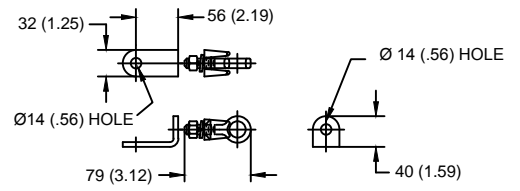


LINE TERMINAL DETAIL



HDG 4-HOLE TERMINAL PAD, PART No. 274914-4002
 TWO HDG TERMINALS, PART No. 271414-3001
 SUITABLE FOR COPPER OR ALUMINUM CONDUCTOR SIZE
 Ø 7 (.25) - Ø 21 (.81)
 25 - 240 sq mm
 AWG#4 - 500 MCM

GROUND TERMINAL DETAIL



HDG TERMINAL BRACKET, PART No. 89606-4001
 ONE HDG TERMINAL, PART No. 271414-3001
 SUITABLE FOR COPPER OR ALUMINUM CONDUCTOR SIZE
 Ø 7 (.25) - Ø 21 (.81)
 25 - 240 sq mm
 AWG#4 - 500 MCM

Ø = DIAMETER
 HDG = HOT DIP GALVANIZED

CHARACTERISTICS	
RATED VOLTAGE (Ur)	108 kVrms
MCOV (Uc)	88 kVrms
MASS	37.2 kg (82.1 lb)
COG ABOVE BASE	808 (31.8)
CREEPAGE DISTANCE	4185 (164.8)
STRIKE DISTANCE	1321 (52)
LIGHTNING IMP W/S	758 kVpk
SWITCHING IMP WET W/S	635 kVpk
POWER FREQ WET W/S	320 kVrms
TOV 1s NO PRIOR DUTY	125 kVrms
TOV 10s NO PRIOR DUTY	120 kVrms
TOV 1s W/PRIOR DUTY	119 kVrms
TOV 10s W/PRIOR DUTY	113 kVrms

CANTILEVER FORCE	
MAXIMUM CONTINUOUS	692 N (156 lbf)
ULTIMATE (max pk)	1384 N (311 lbf)

RECOMMENDED CLEARANCE (METAL - METAL)	
PHASE TO GROUND	503.1 (19.8)
PHASE TO PHASE	582.4 (22.9)

- NOTES:
 1. DIMENSIONS IN millimeters(inches) SUBJECT TO ±3% TOLERANCE
 2. CLEARANCE AND INSULATION W/S VOLTAGE APPLY AT SEA LEVEL
 3. ARRESTER SUITABLE FOR OPERATION AT ALTITUDES UP TO 4380 m (14370 ft)
 4. PACKAGED IN A CORRUGATED BOX.

.5µSEC 10kA IR kV	SWITCHING SURGE IR kV		MAXIMUM 8/20 DISCHARGE VOLTAGE - kV AT					
	500 A	1 KA	1.5 kA	3.0 kA	5 kA	10 kA	20 kA	40 kA
289	207	216	221	232	244	261	283	322

IEEE C62.11
 STATION-CLASS
 SURGE ARRESTER
 Program Revision
 2015.07.30.08.09.10

REV DATE 05/03/11

CONFIDENTIAL: THIS DRAWING AND ITS CONTENTS ARE CONFIDENTIAL AND THE EXCLUSIVE PROPERTY OF HUBBELL POWER SYSTEMS. NO PUBLICATION, DISTRIBUTION OR COPIES MAY BE MADE WITHOUT THE WRITTEN CONSENT OF HUBBELL POWER SYSTEMS. HUBBELL POWER SYSTEMS UNPUBLISHED ALL RIGHTS RESERVED UNDER THE COPYRIGHT LAWS.

TITLE			
EVP ARRESTER 88 KV MCOV			
SIZE	DWG NO.	CAT / PART / ASSY NO.	REV
S	19106131	EVP2088203001	1
DO NOT SCALE THIS DRAWING	DRN BY	DATE	SHEET
	NON	05/03/11	1 OF 1

