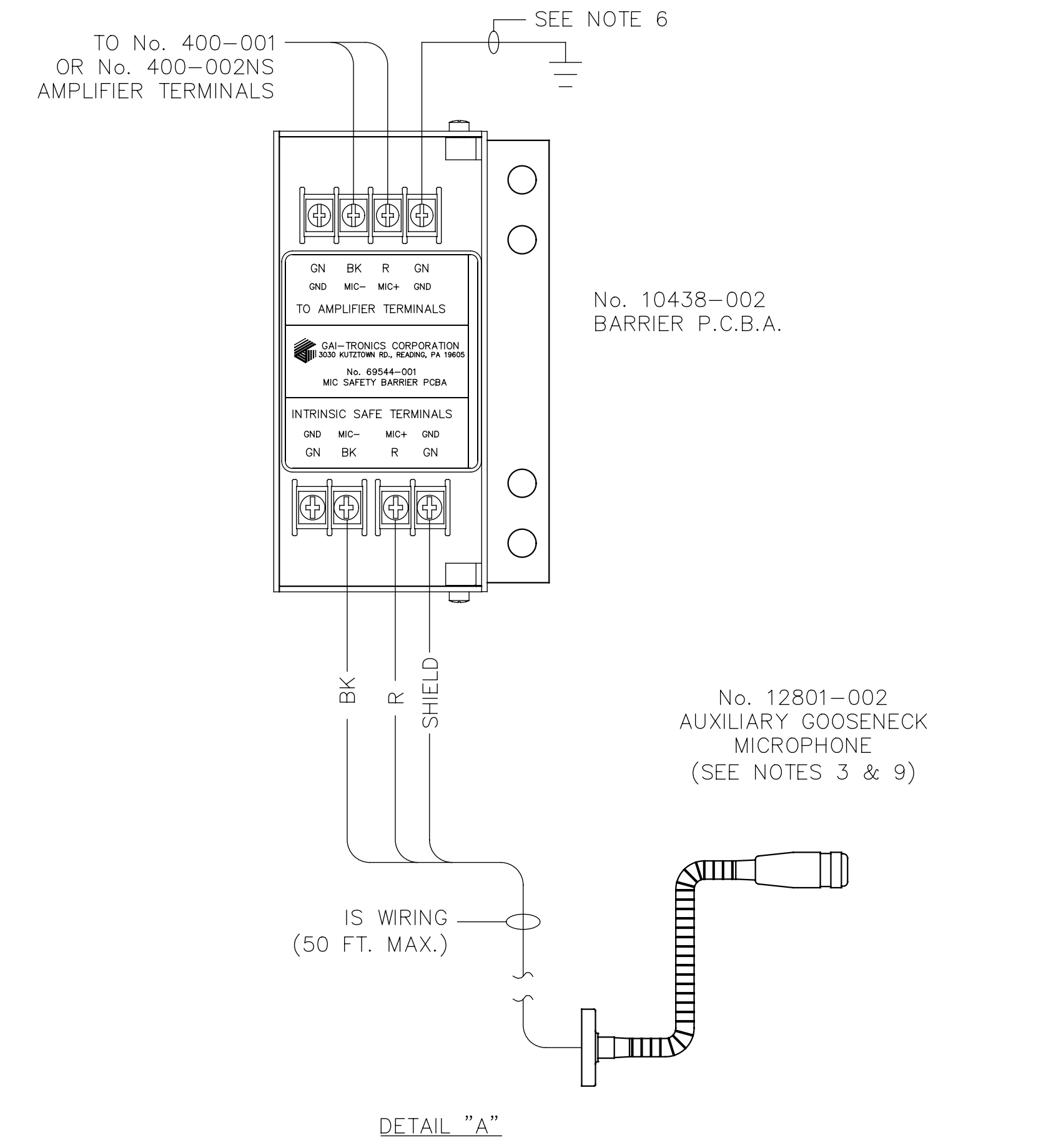
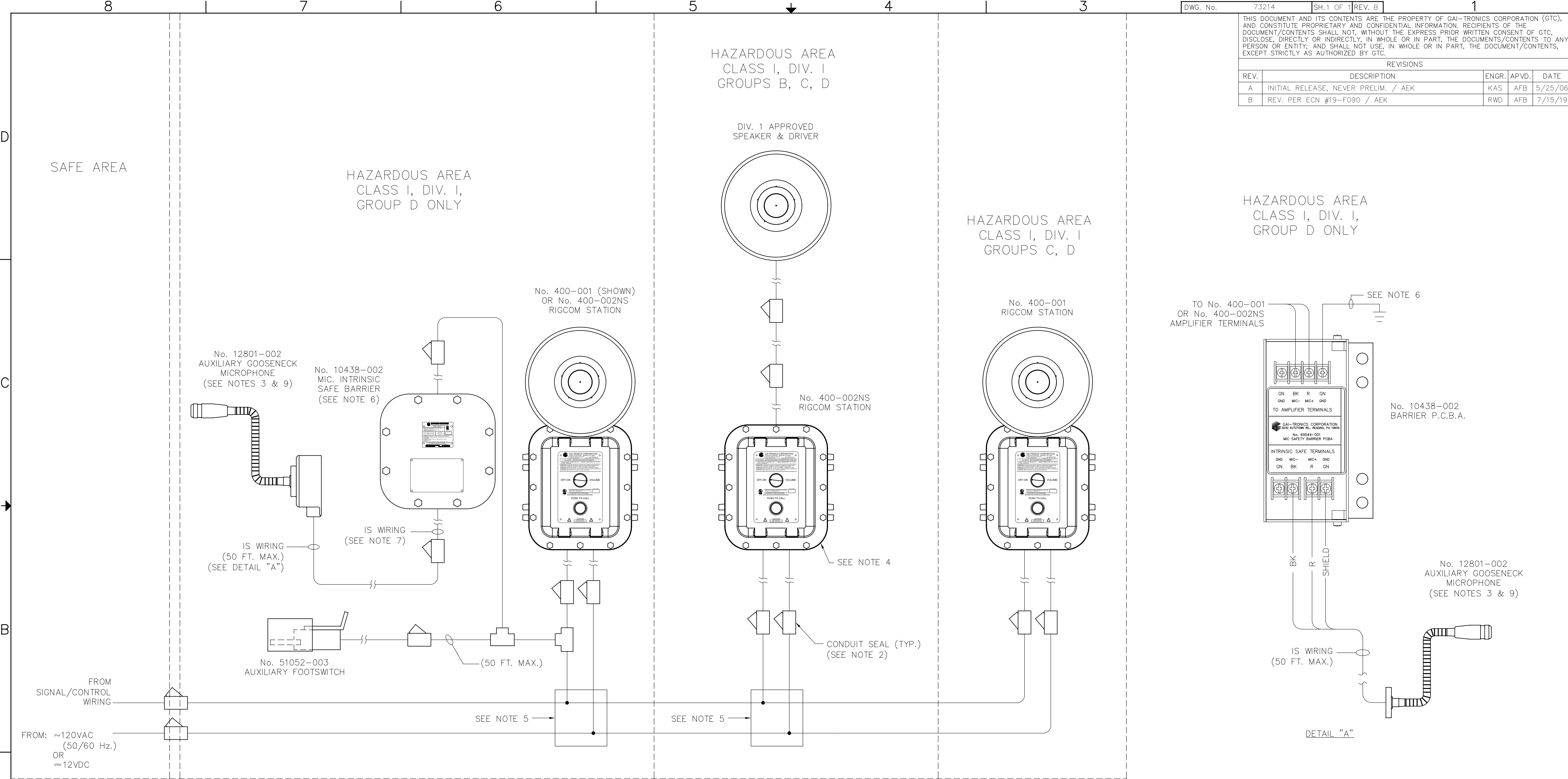


THIS DOCUMENT AND ITS CONTENTS ARE THE PROPERTY OF GAI-TRONICS CORPORATION (GTC), AND CONSTITUTE PROPRIETARY AND CONFIDENTIAL INFORMATION. RECIPIENTS OF THE DOCUMENT/CONTENTS SHALL NOT, WITHOUT THE EXPRESS PRIOR WRITTEN CONSENT OF GTC, DISCLOSE, DIRECTLY OR INDIRECTLY, IN WHOLE OR IN PART, THE DOCUMENTS/CONTENTS TO ANY PERSON OR ENTITY; AND SHALL NOT USE, IN WHOLE OR IN PART, THE DOCUMENT/CONTENTS, EXCEPT STRICTLY AS AUTHORIZED BY GTC.

REVISIONS				
REV.	DESCRIPTION	ENGR.	APVD.	DATE
A	INITIAL RELEASE, NEVER PRELIM. / AEK	KAS	AFB	5/25/06
B	REV. PER ECN #19-F090 / AEK	RWD	AFB	7/15/19



- NOTES:
- INSTALL EQUIPMENT IN ACCORDANCE WITH ALL APPLICABLE LOCAL AND NATIONAL ELECTRICAL CODES (NEC) & (NFPA70).
 - SEAL FITTINGS MUST BE INSTALLED IN ACCORDANCE WITH ARTICLE 501.5 (A)1 THRU (A)4 OF THE NATIONAL ELECTRICAL CODE (NFPA70). CONDUIT SEALS MUST BE INSTALLED WITHIN 18 INCHES OF ENCLOSURE.
 - THE INTRINSICALLY SAFE WIRING FOR THE OPTIONAL AUXILIARY MICROPHONE MUST BE IN ACCORDANCE WITH ARTICLE 504 OF THE NEC AND CANNOT EXCEED THE FOLLOWING SPECS.:
MAX. ALLOWABLE CAPACITANCE (Ca) = 1000 uF
MAX. ALLOWABLE INDUCTANCE (La) = 0.0415 H.
 - SUPPLIED 1 K-OHM RESISTOR TO BE INSTALLED IN CENTER OF THE SYSTEM. ONLY 1 RESISTOR IS NEEDED PER SYSTEM.
 - INSTALL JUNCTION BOX (CUSTOMER SUPPLIED) SUITABLE FOR THE APPLICABLE HAZARDOUS LOCATION.

- THE ASSOCIATED APPARATUS MUST BE CONNECTED TO A SUITABLE GROUND ELECTRODE PER THE NATIONAL ELECTRICAL CODE (ANSI/NFPA 70) OR OTHER STATE OR LOCAL INSTALLATION CODES, AS APPLICABLE. THE RESISTANCE OF THE GROUND PATH MUST BE LESS THAN 1 OHM.
- INTRINSICALLY SAFE CIRCUITS MUST BE WIRED AND SEPARATED IN ACCORDANCE WITH ARTICLE 504.20 OF THE NATIONAL ELECTRICAL CODE (ANSI/NFPA 70) OR OTHER STATE OR LOCAL CODES, AS APPLICABLE.
- CONTROL EQUIPMENT MUST NOT USE OR GENERATE MORE THAN 250 VRMS OR DC WITH RESPECT TO EARTH.
- No. 12801-002:
(A) ELECTRICAL RATING: 5 mV AC RMS MAX., 2 mA AC MAX.
(B) **WARNING** SUBSTITUTION OF COMPONENTS MAY IMPAIR INTRINSIC SAFETY
(C) **WARNING** TO PREVENT IGNITION OF FLAMMABLE OR COMBUSTIBLE ATMOSPHERES, DISCONNECT POWER BEFORE SERVICING.

Pub. 42004-381B

UNLESS OTHERWISE SPECIFIED DIMENSIONS ARE IN INCHES AND TOLERANCES ARE : FRACTIONS DECIMALS ANGLES ± 1/64 .XX ±.02 ± 1° .XXX ±.010	JOB DWG. No.		GAI-TRONICS CORPORATION READING, PA USA	
	CONTRACT No.			
MATERIAL	APPROVALS	DATE	No. 400-001 & 400-002NS RIGCOM MASTER/SLAVE/COMMON CONTROL DRAWING	
	DRAWN AEK	1/12/06		
FINISH	ENGR. KAS	5/25/06	SIZE FSCM NO.	DWG. NO.
	APVD. AFB	5/25/06	D	73214
DO NOT SCALE DRAWING	SHEET 1 OF 1		SCALE NONE	REV. B