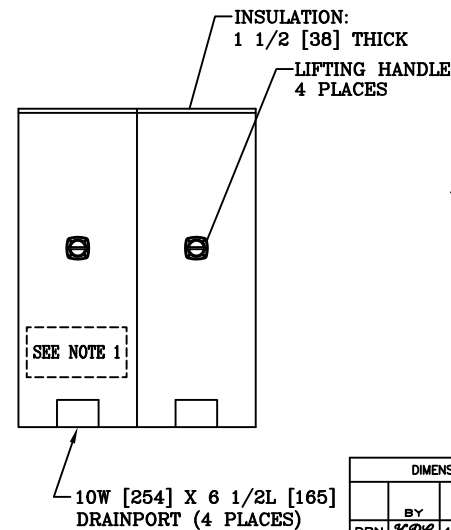
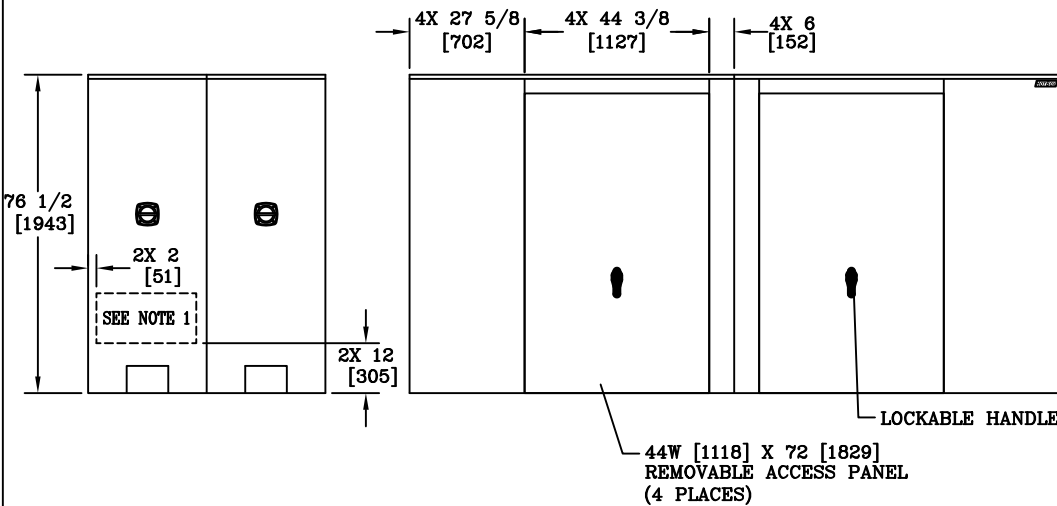



VIEW A-A



NOTES:

- HEAT IS PROVIDED BY (2) 1900WATT, 120V SINGLE PHASE HEATERS. FOR UNHEATED VERSION REPLACE THE PREFIX "H" WITH AN "L".
- INTERNAL DIMENSIONS: 54 [1372]W X 153 [3886]L X 75 [1905]H
- FOR RECOMMENDED SLAB SIZE ADD 9" [229] TO THE ENCLOSURE EXTERIOR.
- OLD P/N: HB10FE-DT

DIMENSIONS ARE IN INCHES OR MILLIMETERS IN BRACKETS UNLESS OTHERWISE NOTED.					
DRN	BY	DATE	WEIGHT	 924 LANE AVENUE JACKSONVILLE, FL 32254 904-786-0204 www.hot-box.com	LOC
CHK	10/5/09	10/5/09	819# 371kg		LC
ENG			SCALE		S
APR			3/8"=1'		REV
APR			SIZE B		A
PROJECT NUMBER 091100				DRAWING DESCRIPTION HOT BOX® (4 SECTION) ALUMINUM ENCLOSURE	
SHEET 1 OF 1				DRAWING NUMBER HA054153075	