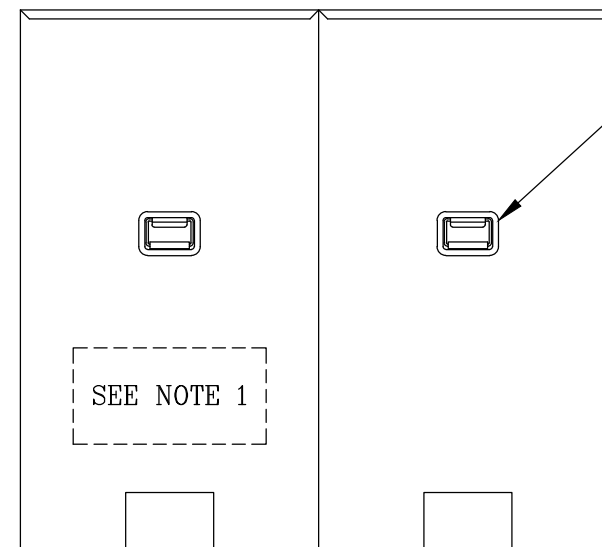
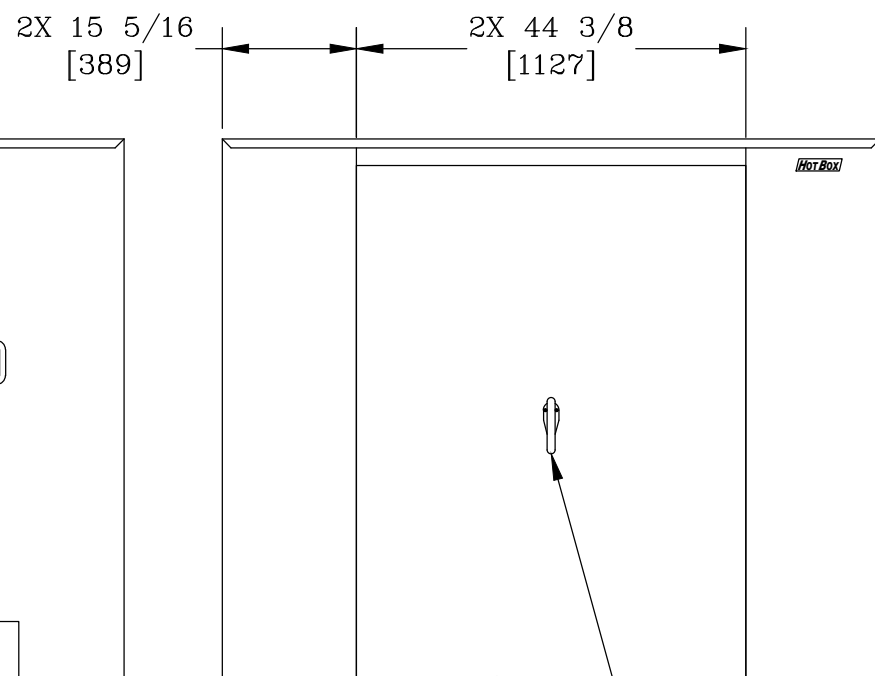


VIEW A-A



INSULATION:
1 1/2 [38] THICK


LIFTING HANDLE
4 PLACES

NOTES:

- HEAT IS PROVIDED BY (2) 1000WATT, 120V SINGLE PHASE HEATERS. FOR UNHEATED VERSION REPLACE THE PREFIX "H" WITH AN "L".
- INTERNAL DIMENSIONS: 65 [1651]W X 72 [1829]L X 60 [1524]H
- FOR RECOMMENDED SLAB SIZE ADD 9" [229] TO THE ENCLOSURE EXTERIOR.

10W [254] X 6 1/2L [165]
DRAINPORT (4 PLACES)

LOCKABLE HANDLE
44 [1118] X 58 1/2 [1486]
REMOVABLE ACCESS PANEL
2 PLACES

HOTBOX ENCLOSURES ARE NON-RETURNABLE. A SIGNED DRAWING MUST BE RETURNED AT THE TIME OF ORDER. DIMENSIONS ARE IN INCHES OR MILLIMETERS IN BRACKETS UNLESS OTHERWISE NOTED.				 3621 INDUSTRIAL PARK DR LENOIR CITY, TN 37771 800-346-3062 www.hot-box.com		LOC
DRN	BY	DATE	WEIGHT	DRAWING DESCRIPTION	HOT BOX® (2 SECTION) ALUMINUM ENCLOSURE HB8000AET	LC
CHK			268#			S
ENG			122kg			REV
APR			SCALE			A
APR			1/2"=1'			9/09
PROJECT NUMBER			SIZE	DRAWING NUMBER		
09874			B	HA065072060		
SHEET 1 OF 1						