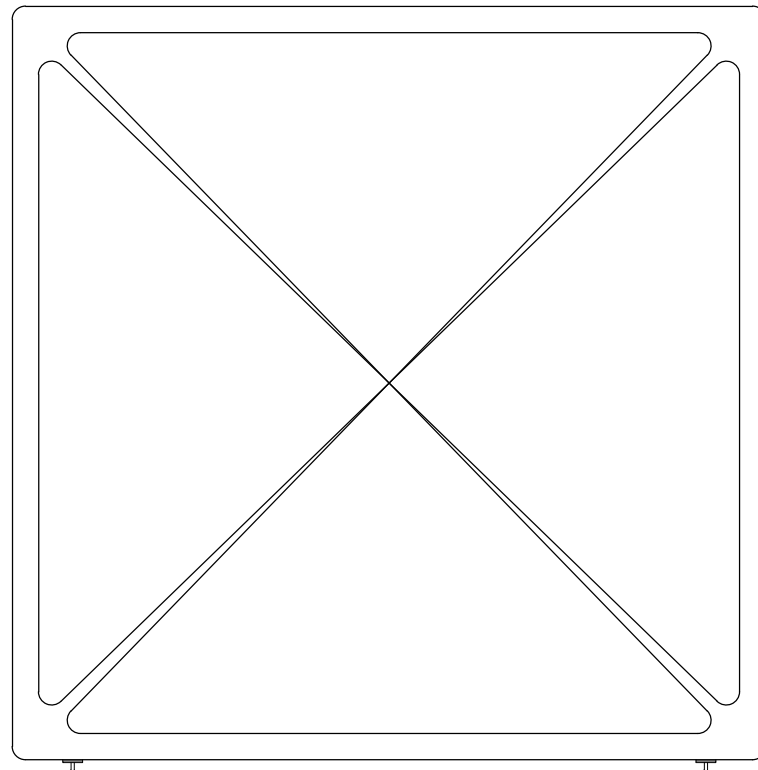
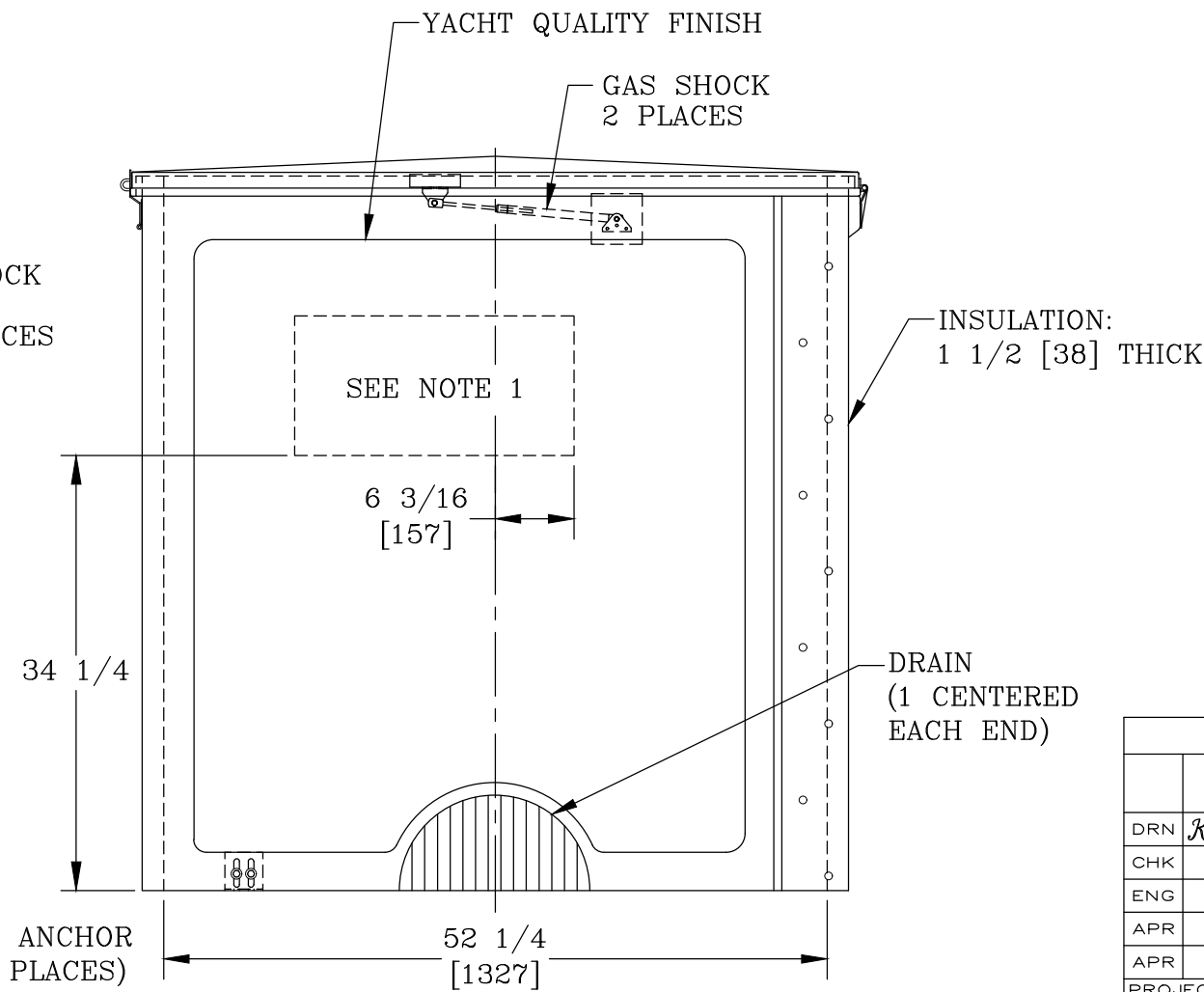
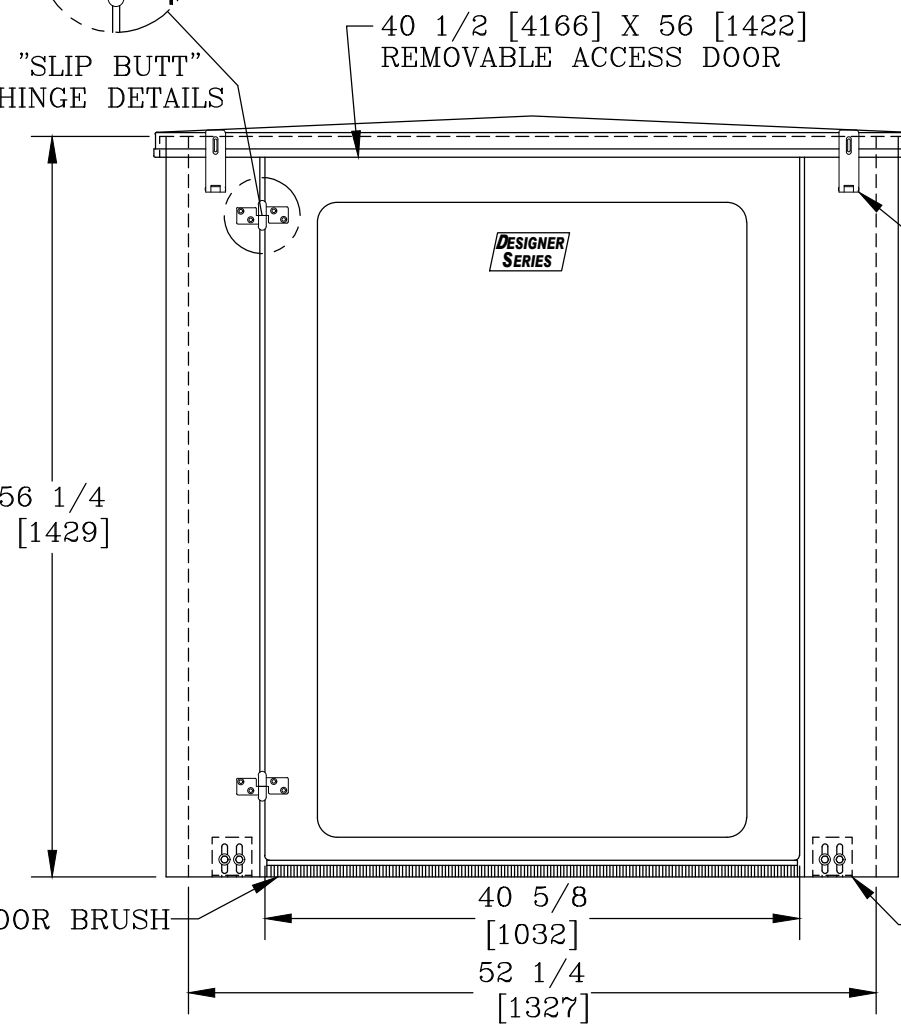
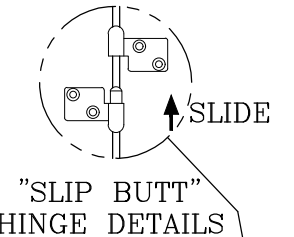
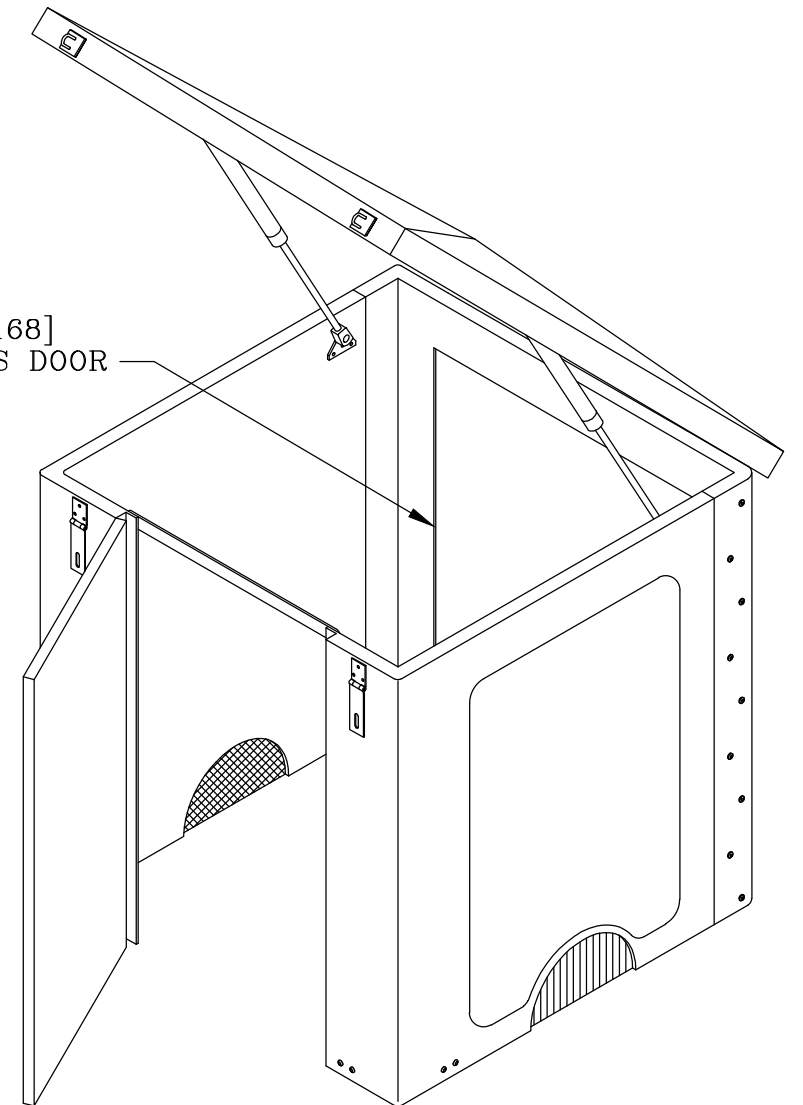


CUSTOMER APPROVAL

APPROVED BY: _____
 DATE: _____



41 [1041] X 46 [1168]
 REMOVABLE ACCESS DOOR



NOTES:

- HEAT IS PROVIDED BY A 1500WATT, 120V SINGLE PHASE HEATER. FOR UNHEATED VERSION REPLACE THE PREFIX "H" WITH AN "L".
- STANDARD COLOR IS BEIGE (OPTIONS AVAILABLE)
- FOR RECOMMENDED SLAB SIZE ADD 12" [305] TO THE ENCLOSURE INTERIOR.

HOTBOX ENCLOSURES ARE NON-RETURNABLE. A SIGNED DRAWING MUST BE RETURNED AT THE TIME OF ORDER. DIMENSIONS ARE IN INCHES OR MILLIMETERS IN BRACKETS UNLESS OTHERWISE NOTED.				
DRN	BY	DATE	WEIGHT	LOC
	KPC	9/24/09	364# 165kg	LC
CHK			SCALE	S
ENG			3/4"=1'	REV
APR			SIZE	B
APR			B	11/10
PROJECT NUMBER			DRAWING NUMBER	
			HM053053056	
SHEET 1 OF 1				

3621 INDUSTRIAL PARK DR
 LENOIR CITY, TN 37771
 800-346-3062
 www.hot-box.com

DRAWING DESCRIPTION
HOT BOX®
 FIBERGLASS ENCLOSURE
 HB8FEM