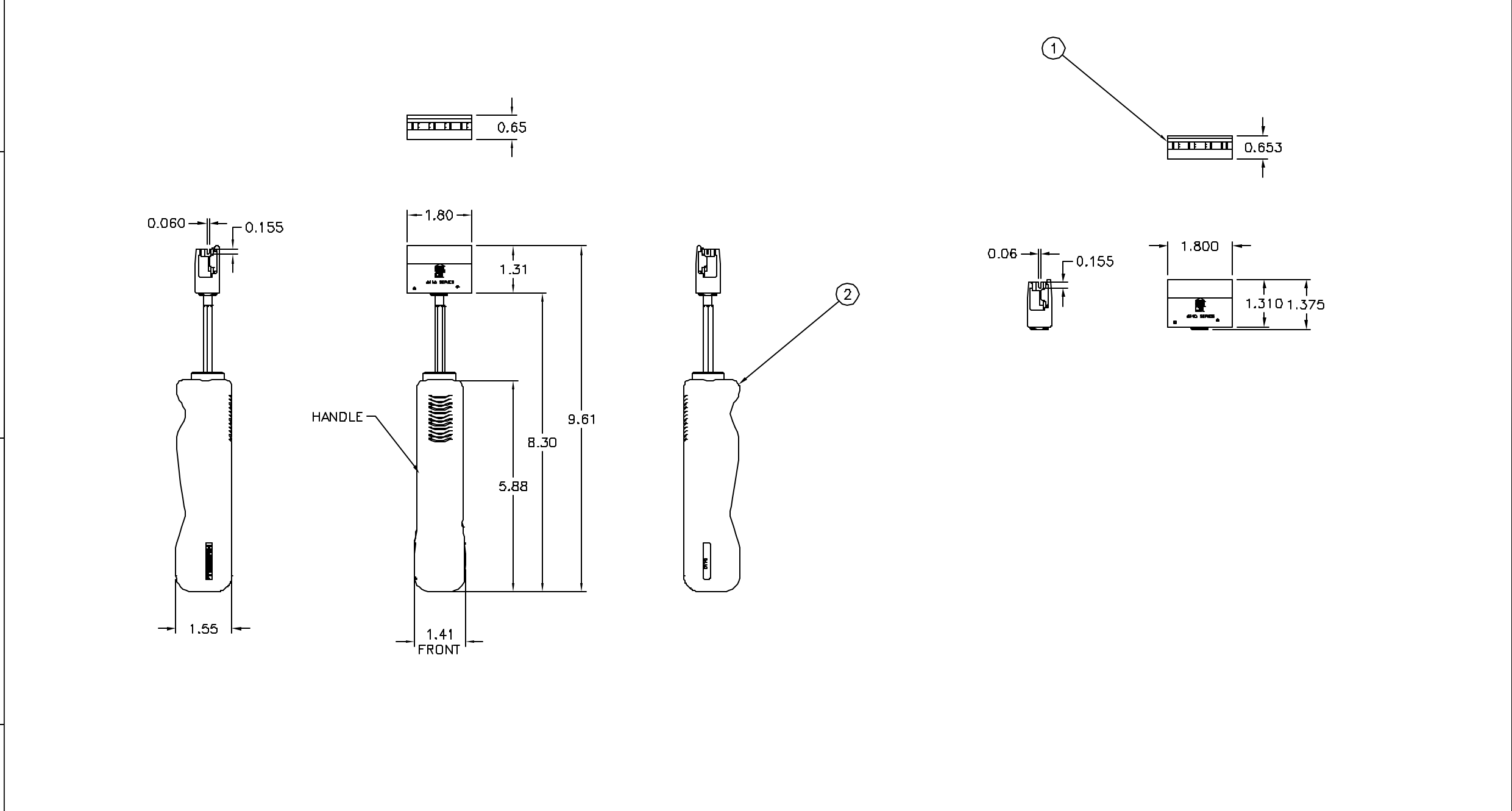



ITEM NO.	DESCRIPTION	QTY.
1	MULTIPAIR IMPACT TOOL WITH HEAD	1
2	REPLACEMENT HEAD WITH BLADES	1

CATALOG NUMBER	DESCRIPTION
6110MPPDT	6110 MULTIPAIR IMPACT TOOL WITH HEAD
6110MPPDT1	6110 MULTIPAIR IMPACT TOOL REPLACEMENT HEAD WITH BLADES



						Created on AUTOCAD	DIMENSIONING AND TOLERANCE PER ANSI Y14.5M-1982 UNLESS OTHERWISE SPECIFIED, DIMENSIONS ARE IN INCHES (MM). TOLERANCES XX = ±.01 (.25) .XXX = ±.005 (.127) .XXXX = ±.0025 (.0635) ANGLE TOL ±1°		PROJECT REFERENCE:		 <b>Hubbell Premise Wiring</b> HUBBELL INCORPORATED (Delaware) 14 Lord's Hill Road, Skidmore, Connecticut 06096				
							IN ACCEPTING OUR DRAWINGS, BLUEPRINTS, OR SUPPORTING DOCUMENTATION FOR QUOTATION OR OTHER PURPOSES, YOU AGREE NOT TO DISCLOSE TO OTHERS THE IDEAS, INFORMATION, OR DESIGNS SHOWN HEREIN, AND THAT YOU WILL MAKE NO USE OF SAME WITHOUT PERMISSION		MATERIAL:						
									DRAWN BY: PAUL S. MAGUIRE 12/13/01		TITLE: 6110 MULTIPAIR IMPACT TOOL & HEAD REPLACEMENT				
									CHECKED BY:						
									APPROVED BY: RAY RODDEN 01/23/02		SIZE C		DRAWING NO. C11651		REV. A
										SCALE: 1/2		SHEET 1 OF 1			
A	4392	12/13/01	INITIAL RELEASE			PSM	R.R.								
REV.	ECN	DATE	DESCRIPTION			CHG BY	APPD BY								