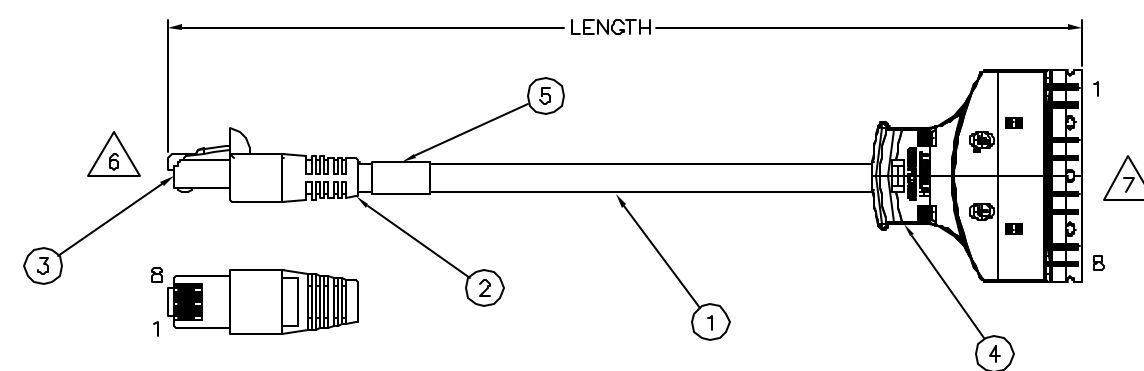


ITEM NO.	DESCRIPTION	QTY.	CATALOG NUMBER	LENGTH	COLOR	DESCRIPTION
1	CAT 6 PATCH CABLE	1	6119PCL3	3 FEET	YELLOW	ASSEMBLY, PATCH CORD, CAT 6 SERIES, 6110 TO RJ45
2	STRAIN RELIEF BOOT	1	6119PCL5	5 FEET	YELLOW	ASSEMBLY, PATCH CORD, CAT 6 SERIES, 6110 TO RJ45
3	RJ45 8-POS PLUG	1	6119PCL7	7 FEET	YELLOW	ASSEMBLY, PATCH CORD, CAT 6 SERIES, 6110 TO RJ45
4	6110 4-PAIR PLUG	1	6119PCL9	9 FEET	YELLOW	ASSEMBLY, PATCH CORD, CAT 6 SERIES, 6110 TO RJ45
5	TRACEABILITY LABEL	1	6119PCL12	12 FEET	YELLOW	ASSEMBLY, PATCH CORD, CAT 6 SERIES, 6110 TO RJ45



NOTES:

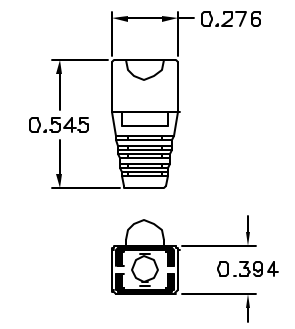
1. MEETS PROPOSED TIA/EIA AND ISO/IEC CATEGORY 6 CHANNEL PERFORMANCE WHEN USED IN CONJUNCTION WITH THE "NEXT SPEED" CAT 6 SYSTEM (NS6-110) AND APPROVED CABLES.
2. PATCH CORD: CATEGORY 6, 24 AWG TINNED COPPER, 0.024 NOMINAL DIAMETER.
3. STRAIN RELIEF BOOT: PVC, YELLOW
4. RJ45 8-POS PLUG: POLYCARBONATE BODY; CONTACTS: PHOSPHOR BRONZE PLATED WITH 50 MICRO INCHES GOLD (MATING AREA)/100 MICRO INCHES MIN NICKEL UNDERPLATE OVERALL.
5. 6110 4-PAIR PLUG: FLAME RETARDANT ENGINEERING THERMOPLASTIC BODY TRANSLUCENT GREY. CONTACTS: COPPER ALLOY WITH 100 MICROINCHES MIN. NICKEL PLATING.

6. WIRING DETAIL:

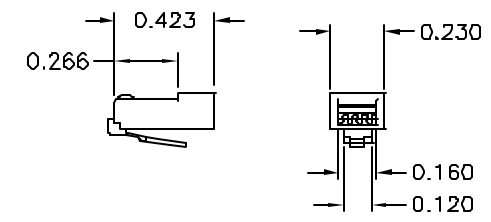
- STANDARD RJ-45 T568B (TIA/EIA) WIRING
- | | |
|------------------|-----------------|
| 1 - WHITE/ORANGE | 5 - WHITE/BLUE |
| 2 - ORANGE | 6 - GREEN |
| 3 - WHITE/GREEN | 7 - WHITE/BROWN |
| 4 - BLUE | 8 - BROWN |

7. WIRING DETAIL:

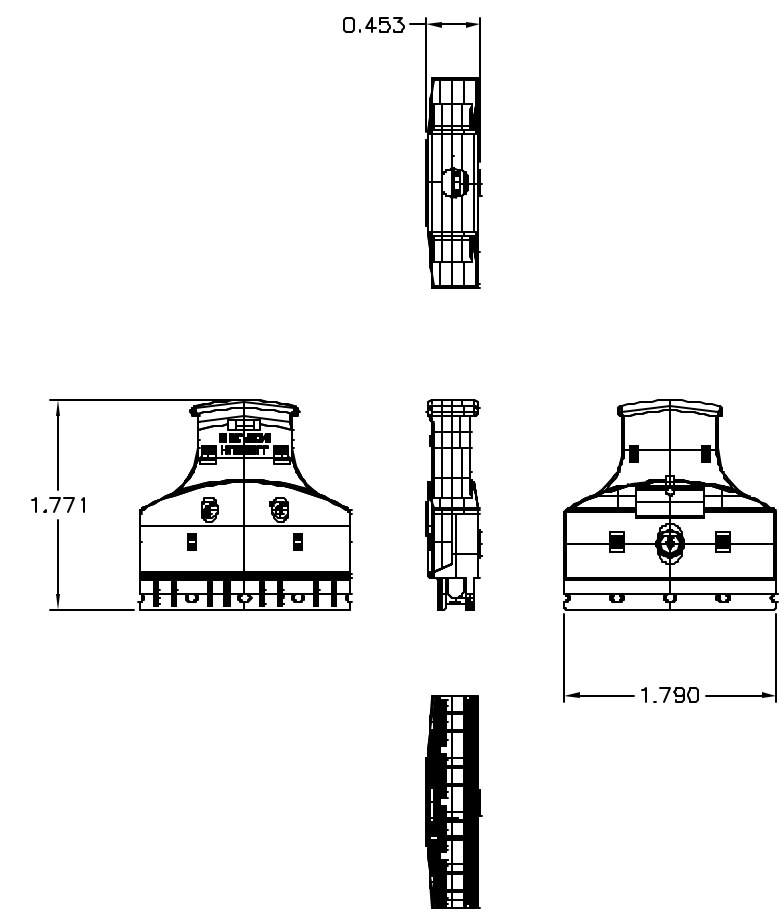
- STANDARD 110 T568B (TIA/EIA) WIRING
- | | |
|------------------|-----------------|
| 1 - WHITE/BLUE | 5 - WHITE/GREEN |
| 2 - BLUE | 6 - GREEN |
| 3 - WHITE/ORANGE | 7 - WHITE/BROWN |
| 4 - ORANGE | 8 - BROWN |



BOOT DETAIL



JACK DETAIL



PLUG DETAIL

REV.	ECN	DATE	DESCRIPTION	CHG BY	APPD BY
A	4293	12/18/01	INITIAL RELEASE	PSM	R.R.

Created on AUTOCAD

DIMENSIONING AND TOLERANCE PER ANSI Y14.5M-1982 UNLESS OTHERWISE SPECIFIED, DIMENSIONS ARE IN INCHES (MM).

TOLERANCES
 .XX = ±.01 (.25)
 .XXX = ±.005 (.127)
 .XXXX = ±.0025 (.0635)
 ANGLE TOL ±1°

IN ACCEPTING OUR DRAWINGS, BLUEPRINTS, OR SUPPORTING DOCUMENTATION FOR QUOTATION OR OTHER PURPOSES, YOU AGREE NOT TO DISCLOSE TO OTHERS THE IDEAS, INFORMATION, OR DESIGNS SHOWN HEREIN, AND THAT YOU WILL MAKE NO USE OF SAME WITHOUT PERMISSION

PROJECT REFERENCE:

MATERIAL:

DRAWN BY:
PAUL S. MAGUIRE 12/18/01

CHECKED BY:

APPROVED BY:
RAY RODDEN 01/23/02

HUBBELL Hubbell Premise Wiring
 HUBBELL INCORPORATED (Delaware)
 14 Lord's Hill Road, Sturington, Connecticut 06378

TITLE:
ASSEMBLY, PATCH CORD,
CAT 6 SERIES, 6110 TO RJ45

SIZE: C **DRAWING NO.:** C1165506 **REV.:** A

SCALE: 1/1 **SHEET:** 1 OF 1