

6

5

4

3

2

1

D

C

B

A

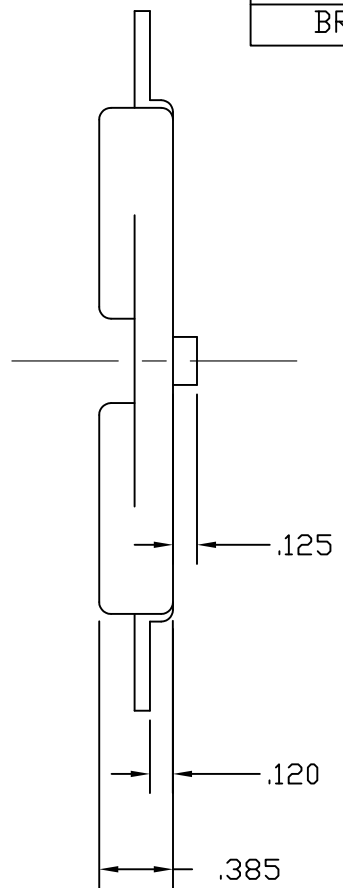
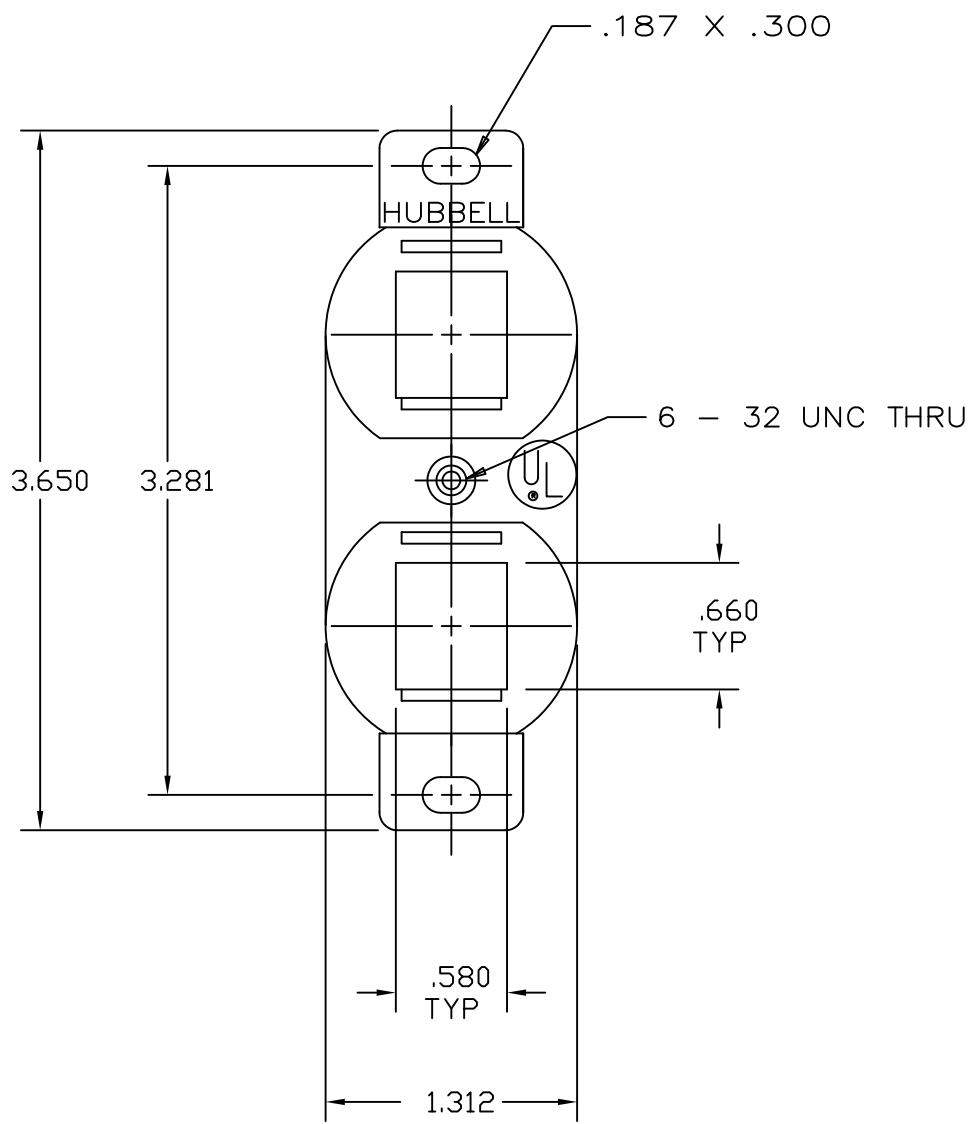
D

C

B

A

CATALOG NO.	DESCRIPTION
BR106AL	JACK, OUTLET, DUPLEX, WPJ MOUNTING, ALMOND
BR106B	JACK, OUTLET, DUPLEX, WPJ MOUNTING, BLACK
BR106C	JACK, OUTLET, DUPLEX, WPJ MOUNTING, OFFICE WHITE
BR106E	JACK, OUTLET, DUPLEX, WPJ MOUNTING, ELECTRIC IVORY
BR106G	JACK, OUTLET, DUPLEX, WPJ MOUNTING, GRAY
BR106W	JACK, OUTLET, DUPLEX, WPJ MOUNTING, WHITE
BR106A	JACK, OUTLET, DUPLEX, WPJ MOUNTING, TELCO IVORY
BR106LA	JACK, OUTLET, DUPLEX, WPJ MOUNTING, LIGHT ALMOND



- NOTES:
1. ACCEPTS KEYSTONE JACKS
 2. INCLUDES 6-32 X 1" MOUNTING SCREWS
 3. SPECIFICATIONS SUBJECT TO CHANGE WITHOUT PRIOR NOTICE.

1	21405	08/24/16	INITIAL RELEASE	JJRJ	MMA
REV.	ECN	DATE	DESCRIPTION	CHG BY	APPD BY

Created on AUTOCAD

DIMENSIONING AND TOLERANCE PER ANSI Y14.5M-1982 UNLESS OTHERWISE SPECIFIED, DIMENSIONS ARE IN INCHES (MM).
 TOLERANCES
 .XX = ±.01 (.25)
 .XXX = ±.005 (.127)
 .XXXX = ±.0025 (.0635)
 ANGLE TOL ±1°

IN ACCEPTING OUR DRAWINGS, BLUEPRINTS, OR SUPPORTING DOCUMENTATION FOR QUOTATION OR OTHER PURPOSES, YOU AGREE NOT TO DISCLOSE TO OTHERS THE IDEAS, INFORMATION, OR DESIGNS SHOWN HEREIN, AND THAT YOU WILL MAKE NO USE OF SAME WITHOUT PERMISSION


PROJECT REFERENCE:

MATERIAL:
PLASTIC

DRAWN BY:
J. RUOT-JACKSON 08/25/16

CHECKED BY:

APPROVED BY:



Hubbell Premise Wiring
 HUBBELL INCORPORATED (Delaware)
 23 CLARA DRIVE, SUITE 103 MYSTIC, CT 06355

TITLE:
ASSEMBLY, OUTLET JACK, DUPLEX, WPJ MOUNTING

SIZE: **B** DRAWING NO. **10213C** REV. **1**

SCALE: NTS SHEET 1 OF 1