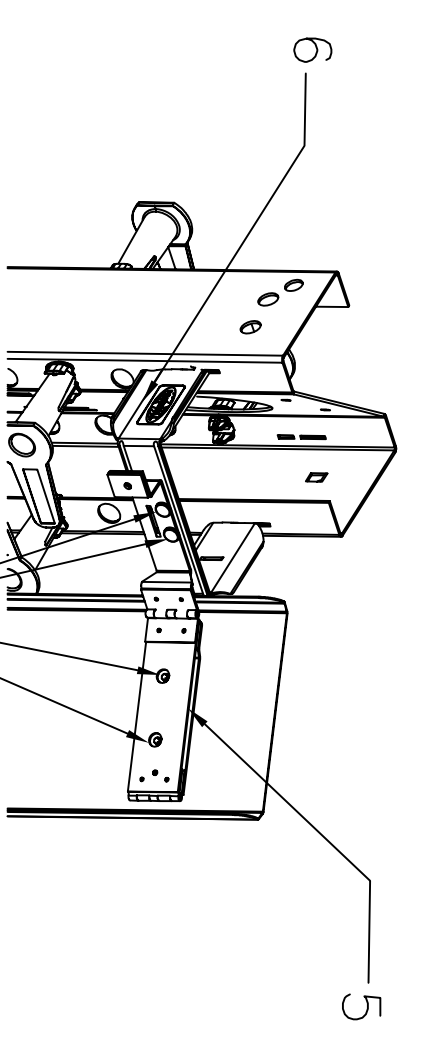


ITEM NO.	DESCRIPTION	QTY.
1	84"H RELAY RACK	1
2	CABLE ORGANIZER CHANNEL	4
3	SPOOLS	48
4	COVER	4
5	HINGE BRACKET	8, (N/A)
6	GATE, FOR MOUNTING COVERS	8
7	1/2-13 HARDWARE PACK	1

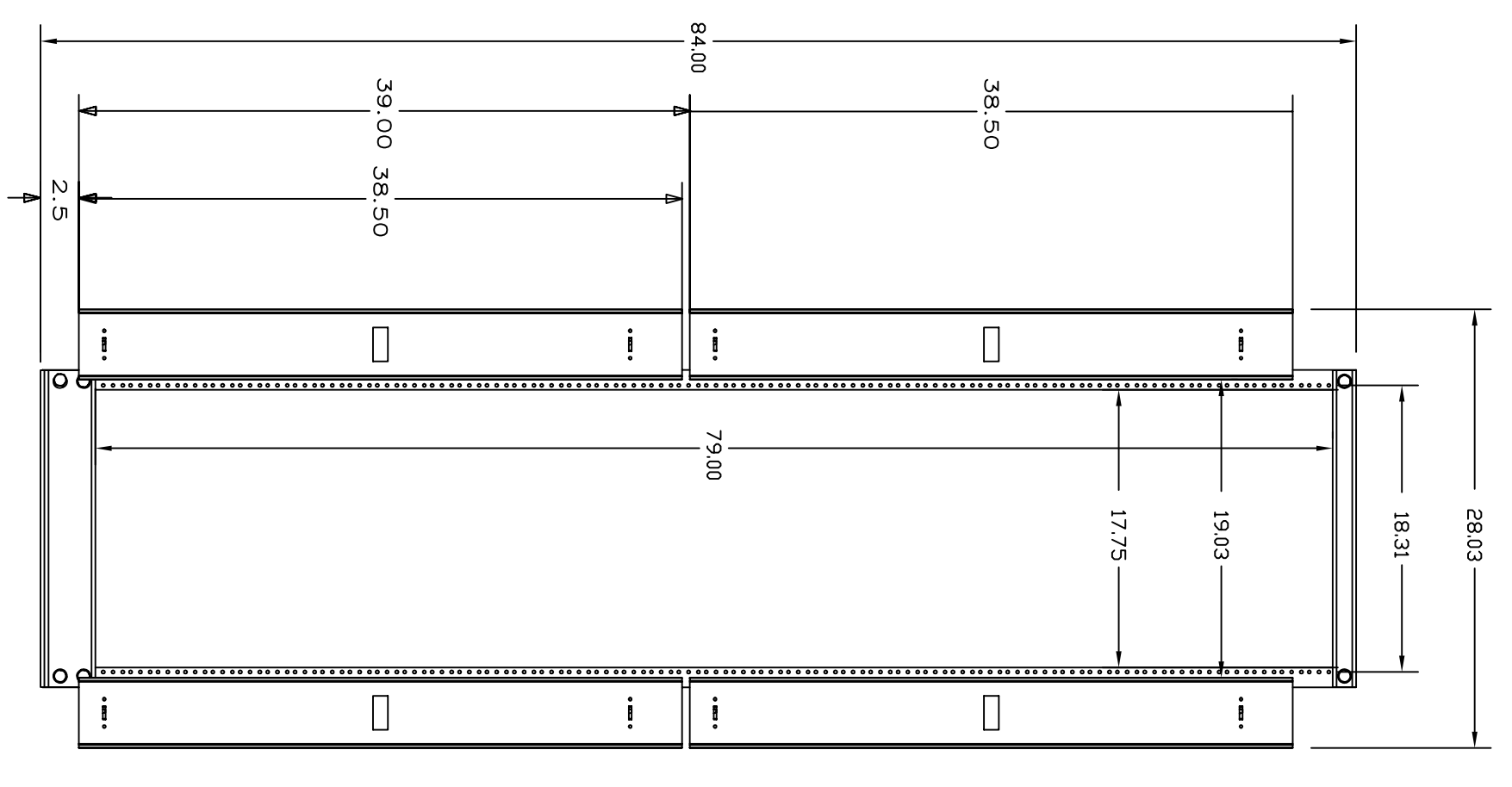
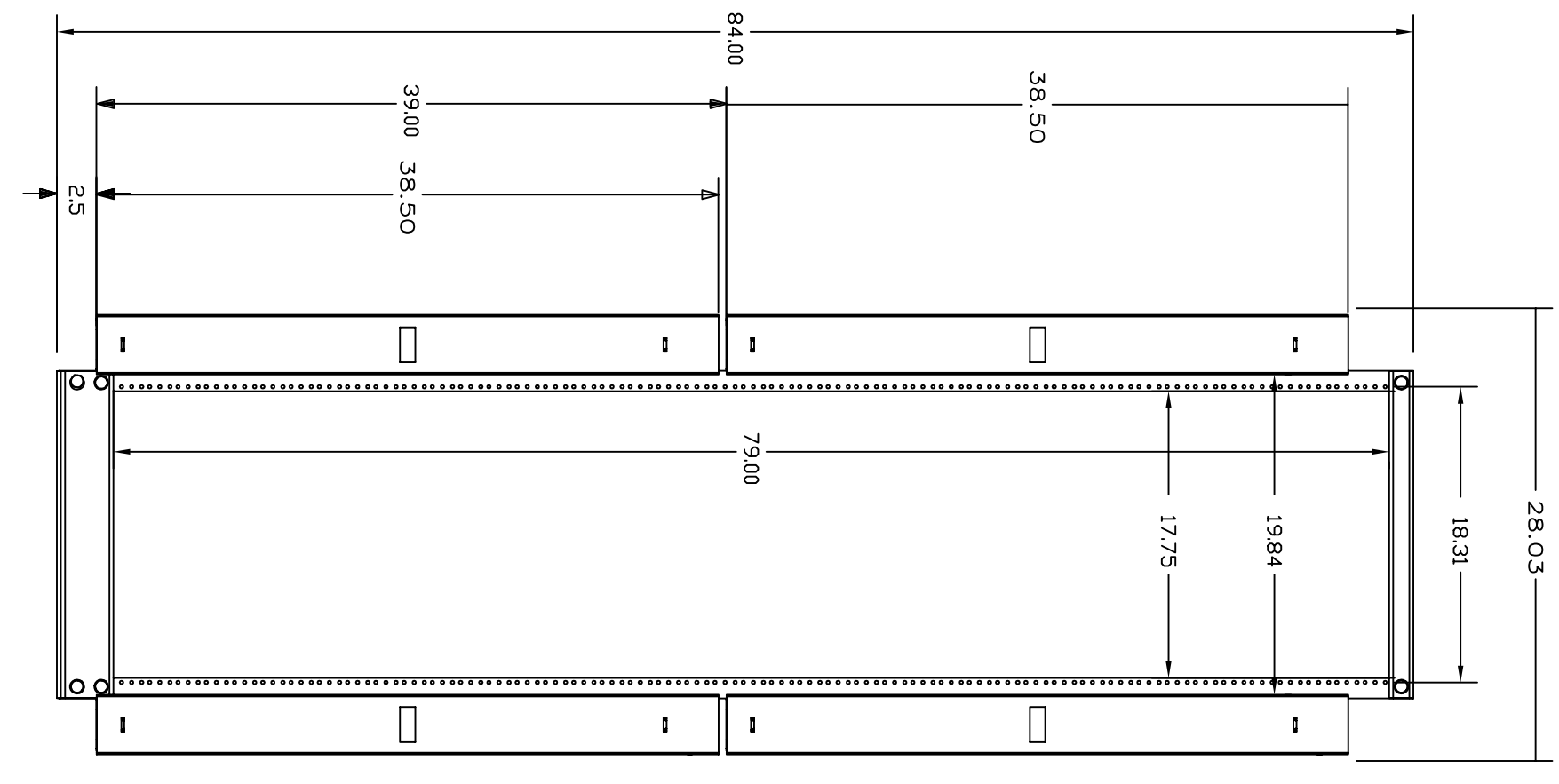
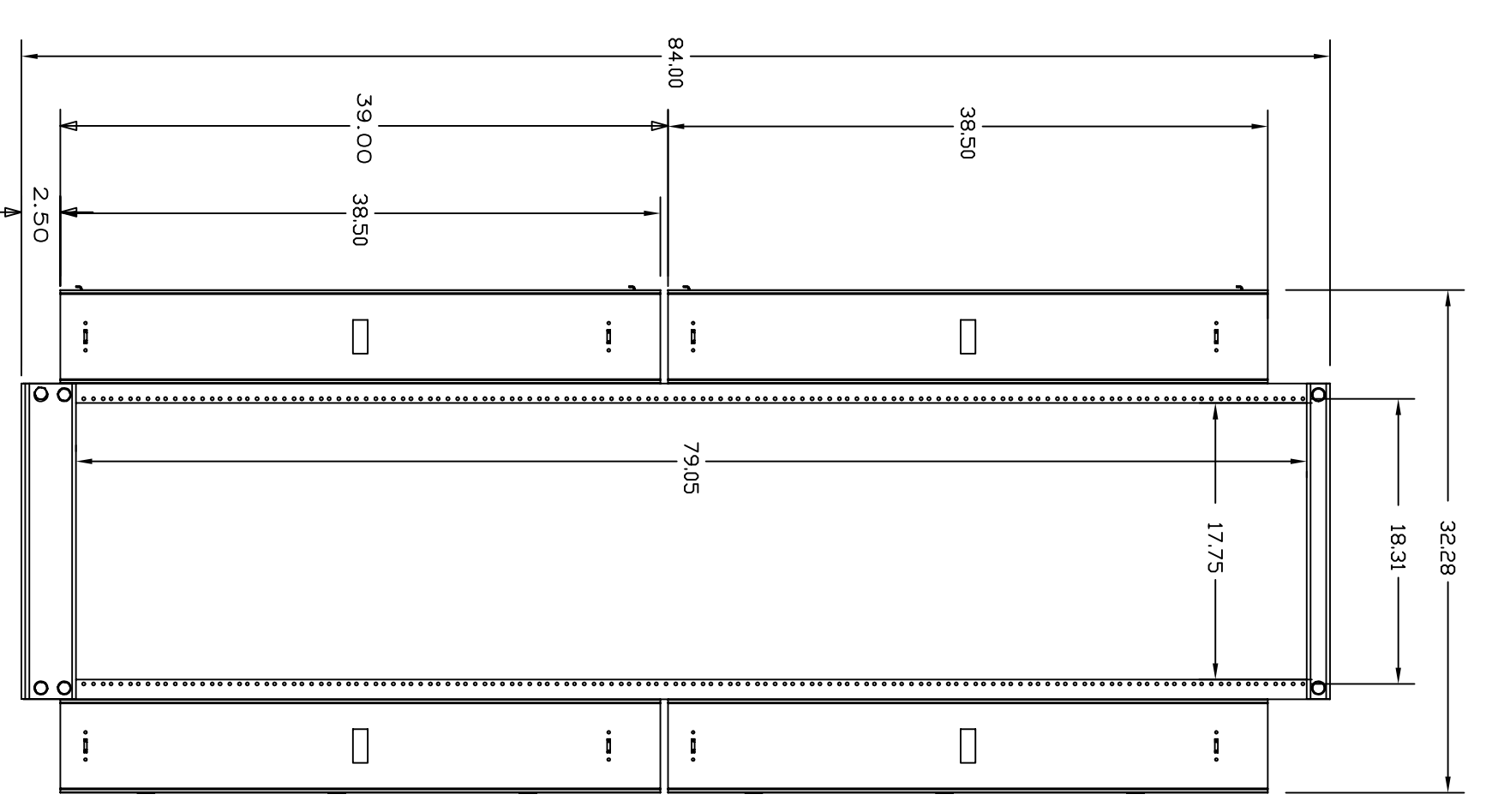
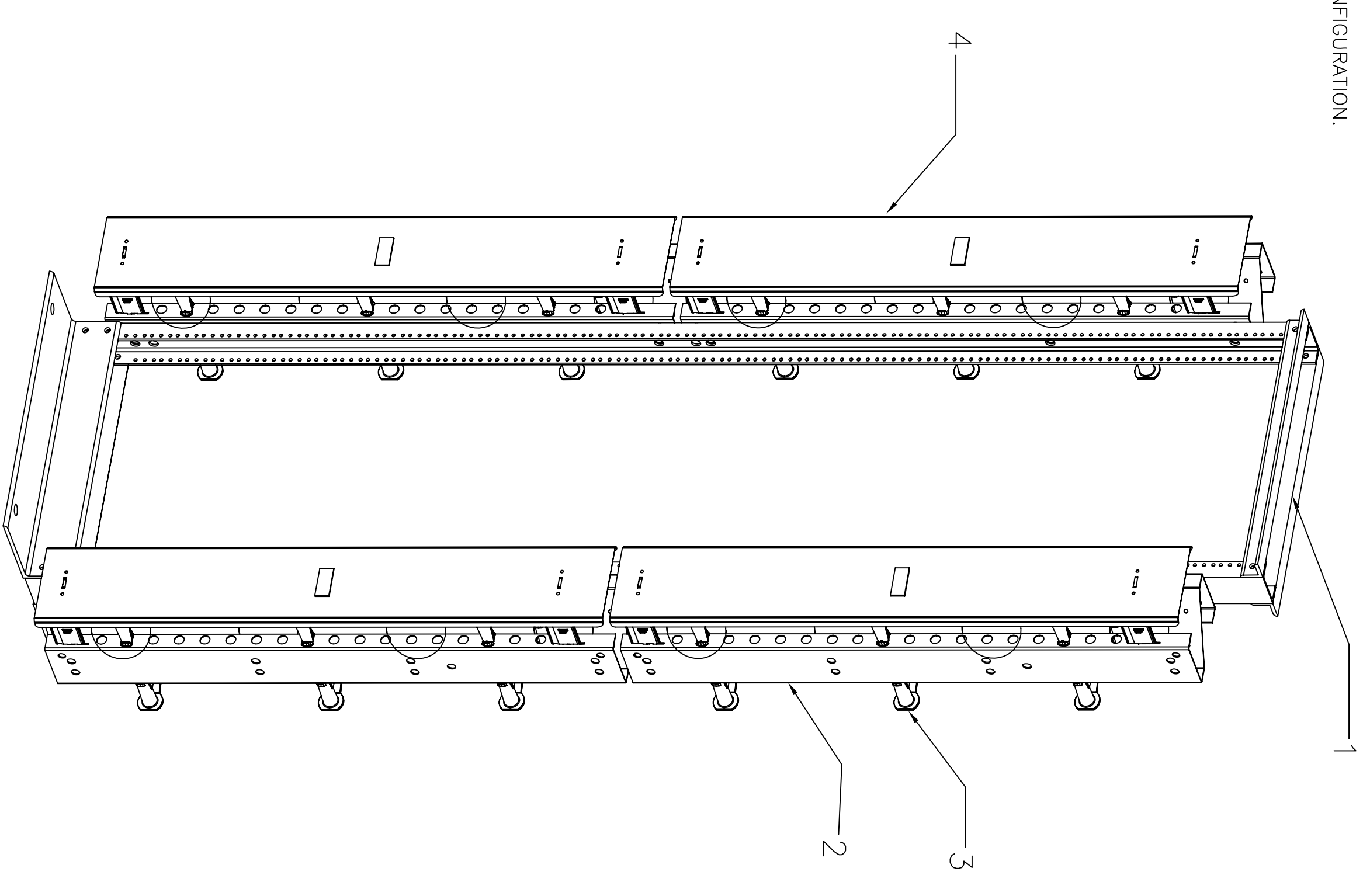
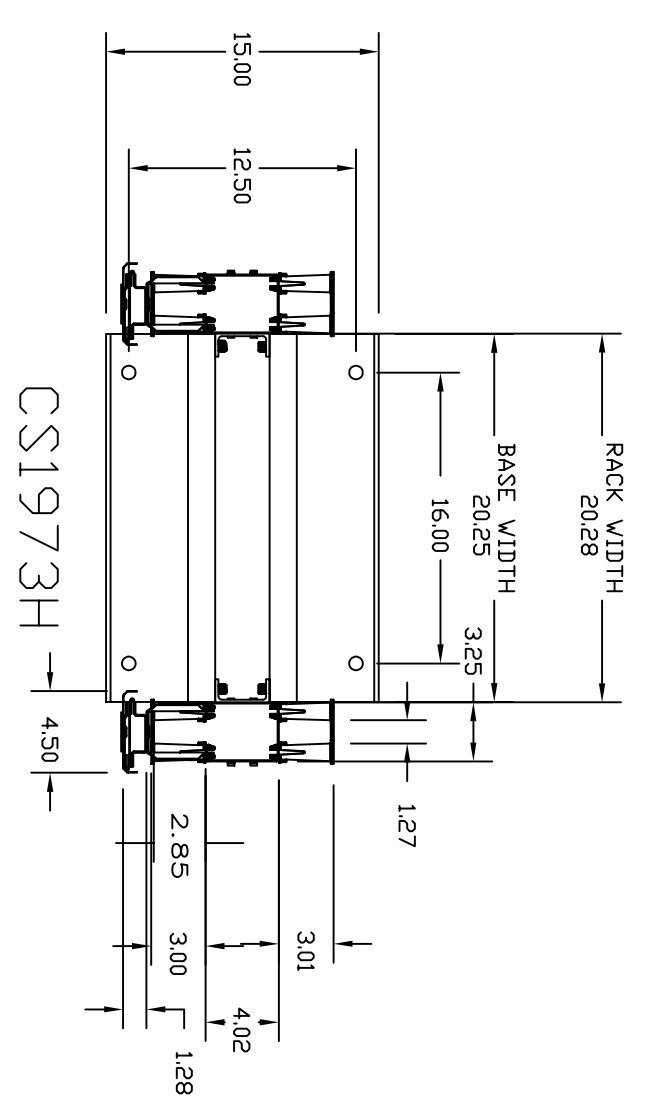
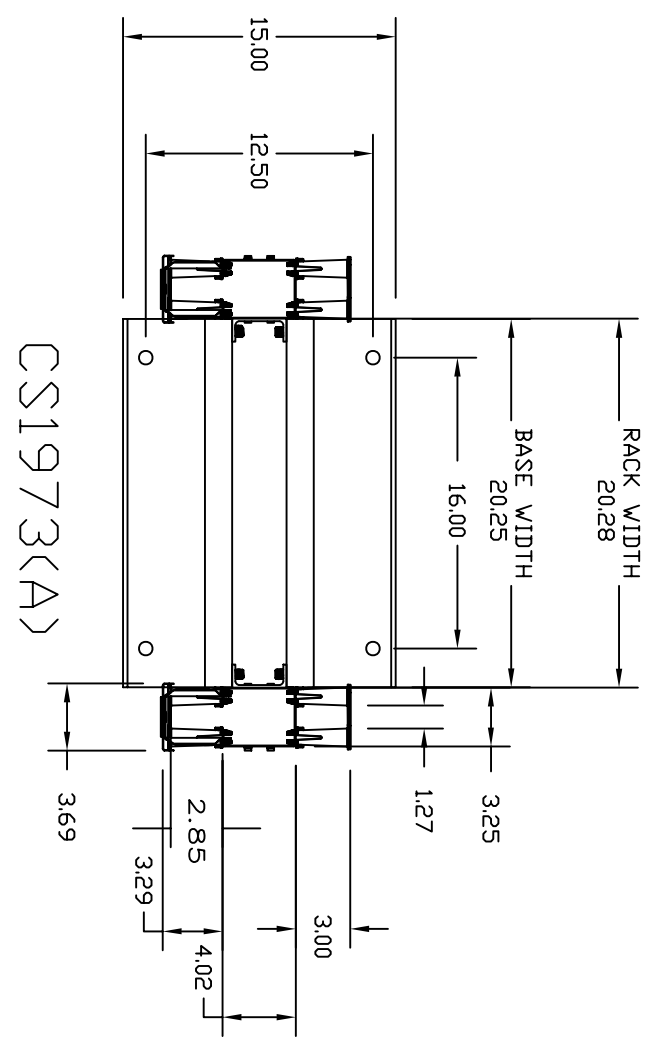
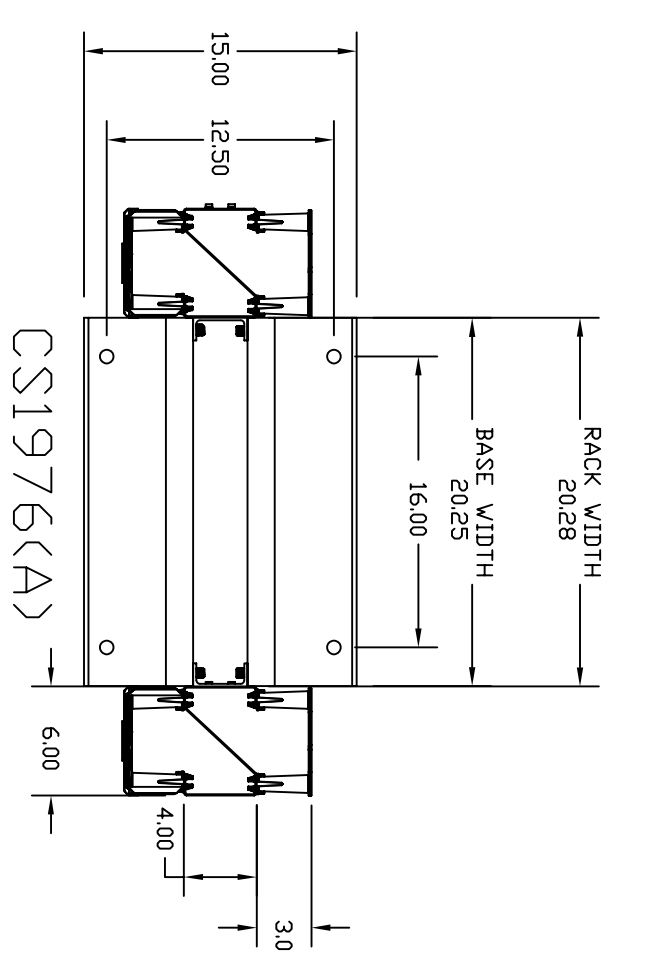
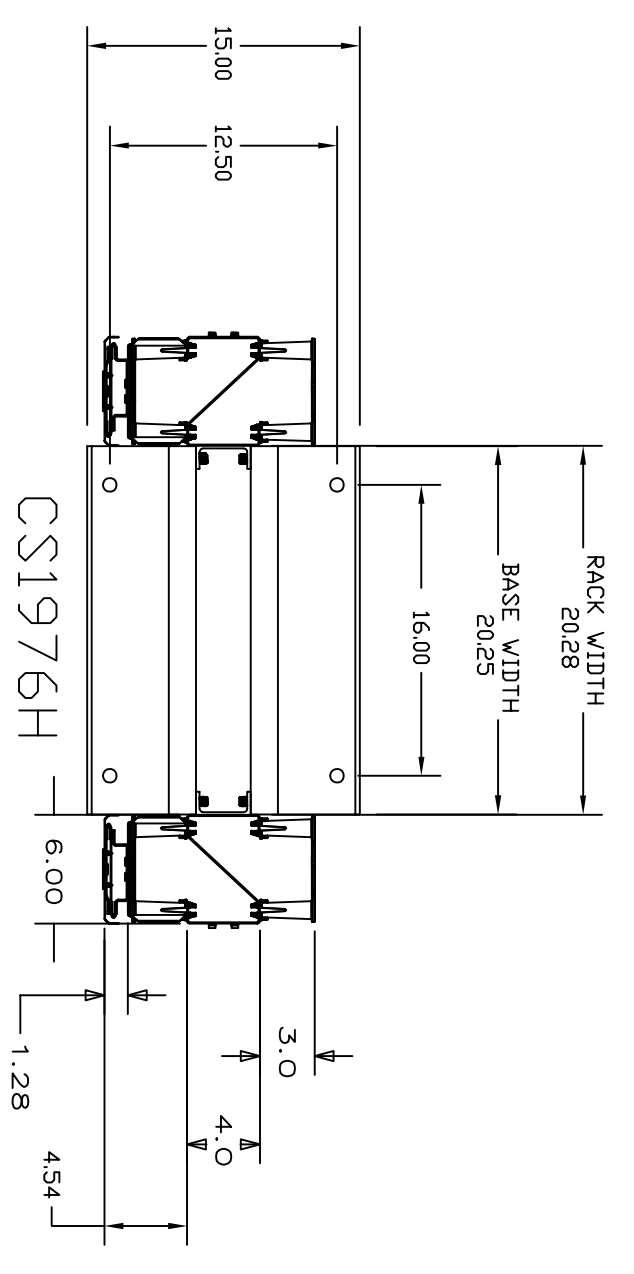


PUSH FASTENERS ARE USED TO FASTEN SWITCH BRACKET TO GATE AND DOOR

VIEW SHOWING HINGED COVER ASSEMBLY CS1973H & CS1976H

- NOTES:
- 1) ASSEMBLY REQUIRED.
 - 2) LOAD CAPACITY REF. 500 Lbs. DEPENDING ON LOAD/INSTALLATION CONFIGURATION.
 - 3) SPECIFICATIONS SUBJECT TO CHANGE WITHOUT NOTICE.

CATALOG NO.	DESCRIPTION	SURFACE FINISH
CS1973	7FT H, 19" RELAY RACK W/4" WIDE "C" CHANNEL	BLACK
CS1976	7FT H, 19" RELAY RACK W/6" WIDE "Z" CHANNEL	BLACK
CS1973A	7FT H, 19" RELAY RACK W/4" WIDE "C" CHANNEL	ALUMINUM
CS1976A	7FT H, 19" RELAY RACK W/6" WIDE "Z" CHANNEL	ALUMINUM
CS1973H	7FT H, 19" RELAY RACK W/4" HINGED FRONT COVERS & "C" CHANNELS	BLACK
CS1976H	7FT H, 19" RELAY RACK W/6" HINGED FRONT COVERS & "Z" CHANNELS	BLACK



CS1976,
CS1876A,
CS1976H

CS1973(A)

CS1973H

REV.	EON	DATE	DESCRIPTION	CHG BY	APPD BY
B	6162	07/19/07	CORRECTED CALLOUTS	MMA	DL

Created on AUTOCAD

HUBBELL
Hubbell Premise Wiring
HUBBELL INCORPORATED (Delaware)
14 Lords Hill Road, Stonington, Connecticut 06378

PROJECT REFERENCE:
MATERIAL: RELAY RACK: ALUMINUM
CHANNEL: 14 Ga. C.R.S.
COVER: 20 Ga. C.R.S.
DRAWN BY: N.RICHARDS

CHECKED BY:
APPROVED BY:

TITLE:
EQUIPMENT RACK WITH
VERTICAL CABLE MANAGEMENT CHANNELS

SIZE: DRAWING NO. **D** HW512407C
SCALE: N/A SHEET 1 OF 1

REV.: **B**