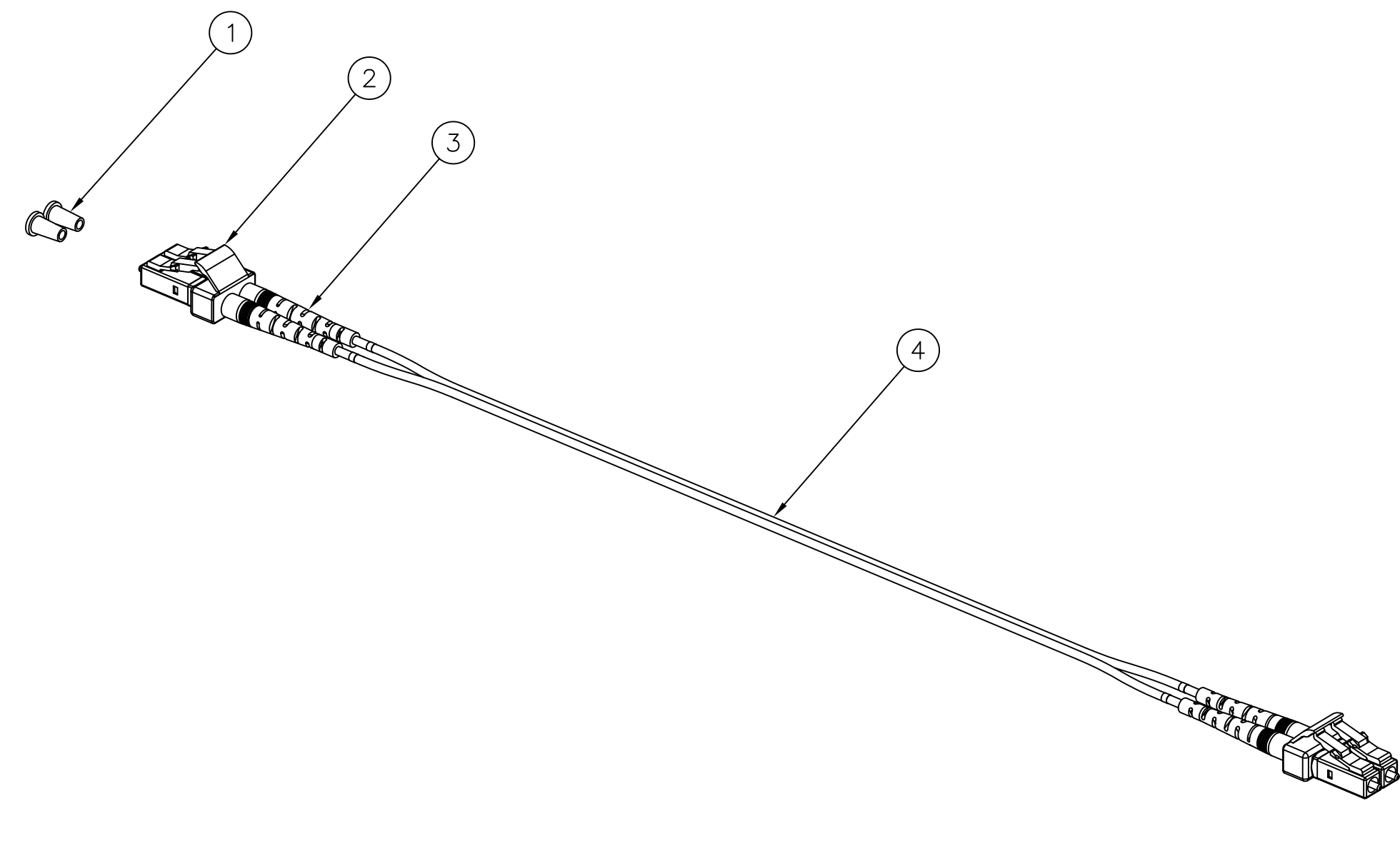
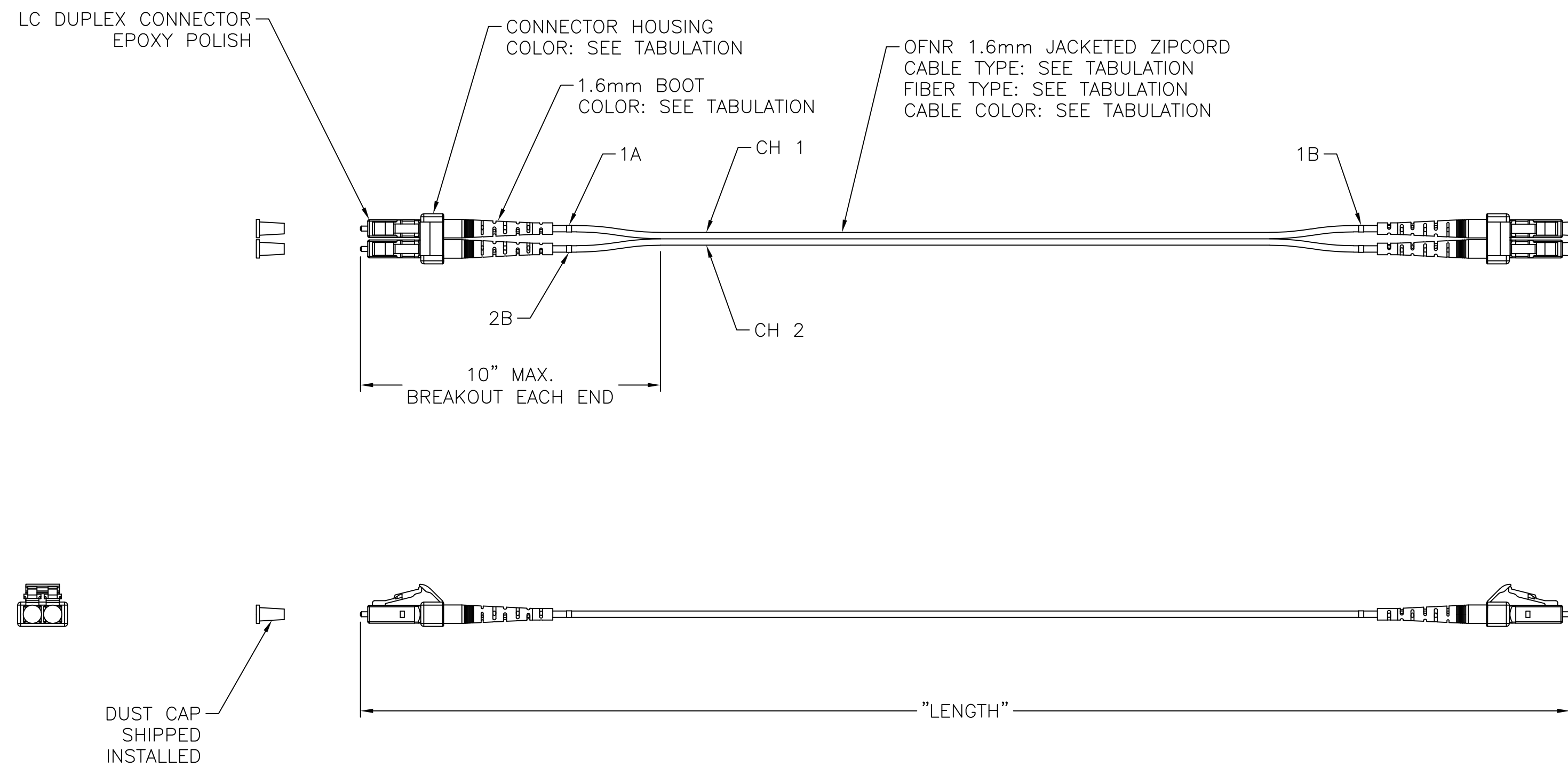


ITEM NO.	DESCRIPTION	QTY.
1	LC CONNECTOR DUST CAP	4
2	LC DUPLEX CONNECTOR BODY	2
3	1.6mm LC CONNECTOR BOOT	4
4	1.6mm DUPLEX CABLE	A/R

CATALOG NO.	DESCRIPTION	CABLE COLOR	CONN COLOR	BOOT COLOR
DFRCLCLCFxxFMM	LC-LC DUPLEX PATCH CORD 50/125um OM4 MULTIMODE	AQUA	BEIGE	GRAY
DFRCLCLCExxFMM	LC-LC DUPLEX PATCH CORD 50/125um OM3 MULTIMODE	AQUA	BEIGE	GRAY
DFRCLCLCSxxFSM	LC-LC DUPLEX PATCH CORD 9/125um OS2 SINGLEMODE	YELLOW	BLUE	WHITE


** -'XX' DENOTES THE PATCH CORD LENGTH, IN FEET



NOTES:

- CONNECTOR OPTICAL, MECHANICAL AND ENVIRONMENTAL PERFORMANCE MEETS TIA/EIA-568-C.3 SPECIFICATIONS.
- OM3: FIBER IS RATED FOR 10Gb/s TRANSMISSION FOR UP TO 300 METERS AT 850nm.
OM4: FIBER IS RATED FOR 100Gb/s TRANSMISSION FOR UP TO 150 METERS AT 850nm.
- CONNECTOR USES A PC RADIUS TIP ZIRCONIA CERAMIC FERRULE.
- CONNECTOR HOUSING IS INJECTION MOLDED ENGINEERING PLASTIC RESIN.
- OPTICAL INSERTION LOSS TEST DATA INCLUDED IN EACH BAGGED PATCH CORD.
- CABLE MARKINGS TO IDENTIFY CHANNEL (1 OR 2) AND EACH END (A OR B).
- SPECIFICATIONS SUBJECT TO CHANGE WITHOUT PRIOR NOTICE.

REV.	ECN	DATE	DESCRIPTION	CHG BY	APPD BY
1	22485	06/28/17	INITIAL RELEASE	AK	MMA

Created on AUTOCAD	DIMENSIONING AND TOLERANCE PER ANSI Y14.5M-1982 UNLESS OTHERWISE SPECIFIED, DIMENSIONS ARE IN INCHES (MM). TOLERANCES .XX = ±.01 (.25) .XXX = ±.005 (.127) .XXXX = ±.0025 (.0635) ANGLE TOL ±1°		PROJECT REFERENCE: 028-17	 Hubbell Premise Wiring HUBBELL INCORPORATED (Delaware) 14 Lord's Hill Road, Stonington, Connecticut 06378	
	IN ACCEPTING OUR DRAWINGS, BLUEPRINTS, OR SUPPORTING DOCUMENTATION FOR QUOTATION OR OTHER PURPOSES, YOU AGREE NOT TO DISCLOSE TO OTHERS THE IDEAS, INFORMATION, OR DESIGNS SHOWN HEREIN, AND THAT YOU WILL MAKE NO USE OF SAME WITHOUT PERMISSION		MATERIAL:		TITLE: FIBER PATCHCORD LC-LC SM, MM, RISER, DUPLEX
			DRAWN BY: A. Karanxha 06/28/17	SIZE: D	DRAWING NO.: HWS14765C
			CHECKED BY:	SCALE: 1/1	SHEET 1 OF 1
		APPROVED BY:		REV. 1	