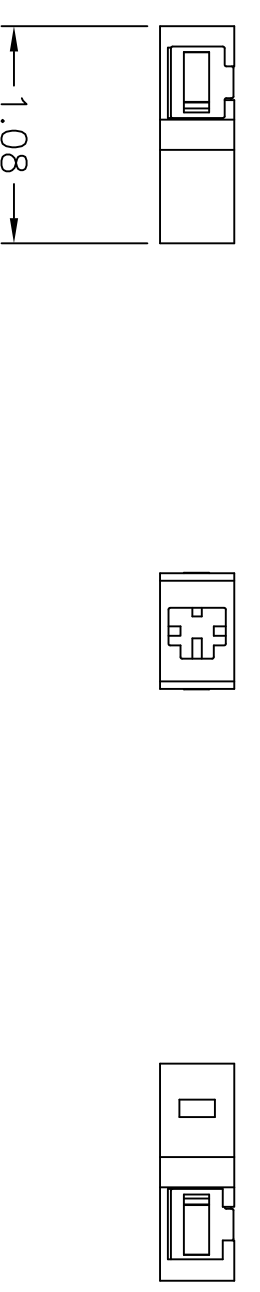
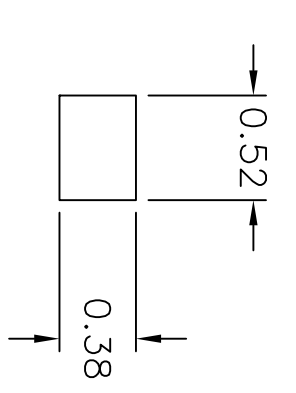
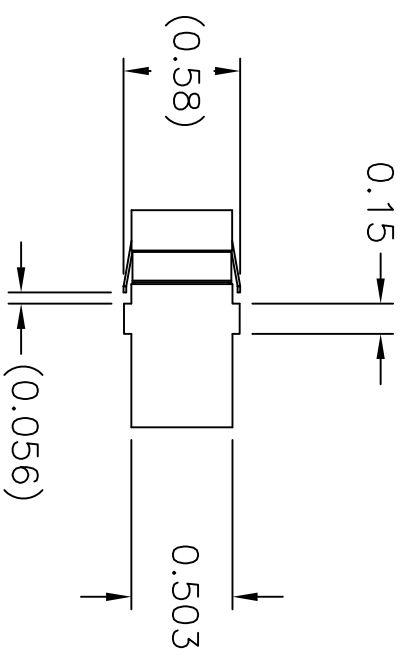
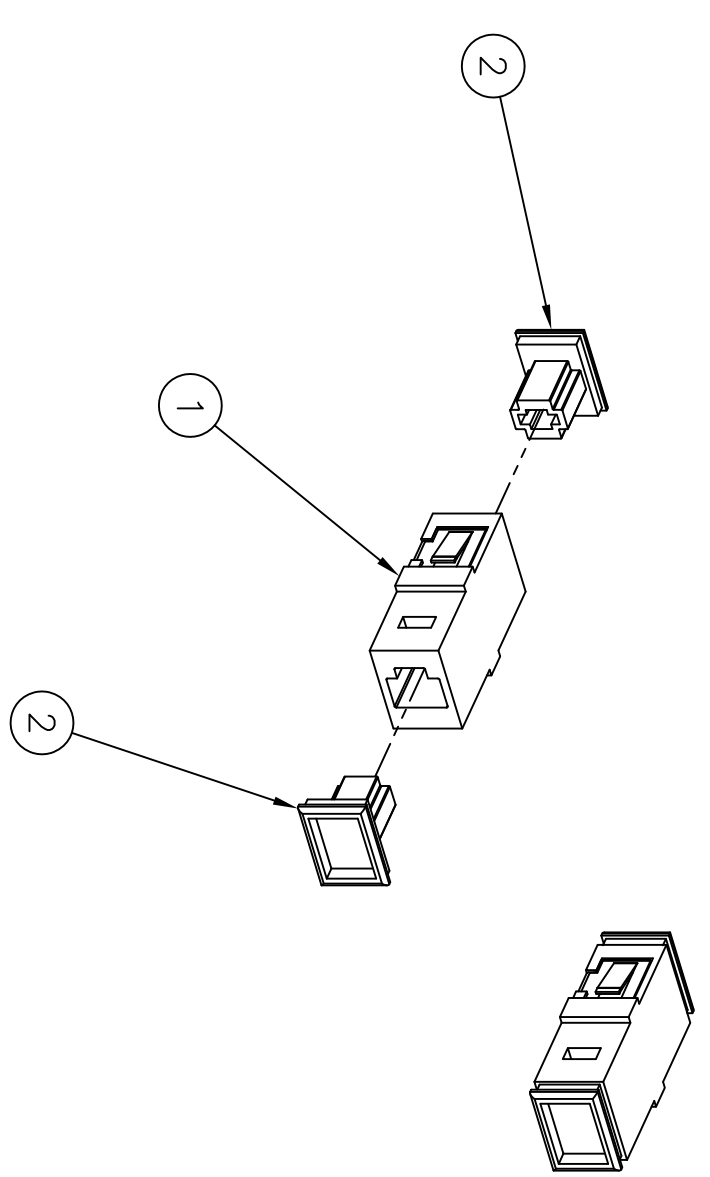
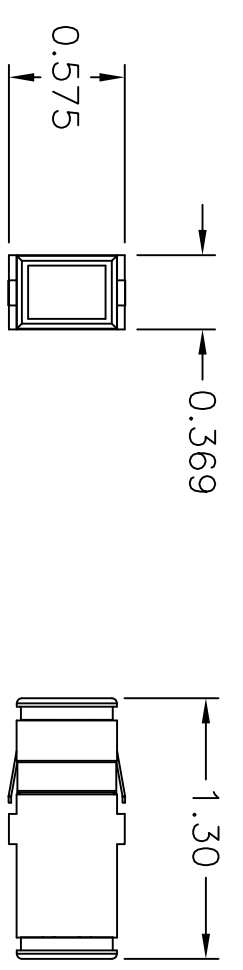


ITEM NO.	DESCRIPTION	QTY.
1	ADAPTER, MT-RJ SC-STYLE, MM	1
2	DUST CAP	4

CATALOG NUMBER	DESCRIPTION	COLOR
FAMTRJMPB6	ADAPTER, MT-RJ SC STYLE, MM	BEIGE
FAMTRJCSAQ	ADAPTER, MT-RJ SC STYLE, MM	AQUA
FAMTRJCSBK	ADAPTER, MT-RJ SC STYLE, MM	BLACK



NOTES:

- ADAPTERS SUPPLIED WITH DUST CAPS INSTALLED.
- ADAPTER MATERIAL IS UL-V0 ENGINEERING THERMOPLASTIC.
- CLIP MATERIAL IS STAINLESS STEEL.
- ALIGNMENT SLEEVES SUITABLE FOR MULTIMODE OR APPLICATIONS ONLY.
- SPECIFICATIONS SUBJECT TO CHANGE WITHOUT NOTICE.

REV.	ECN	DATE	DESCRIPTION	CHG BY	APPD BY
B	6621	8/14/09	ADDED 2 CATALDG NUMBERS	DAA	
C	17038	3/15/11	REVISED NOTE #4 TO REMOVE SM REFERENCE	CG	

Created on AUTOCAD

DIMENSIONING AND TOLERANCE PER ANSI Y14.5M-1982 UNLESS OTHERWISE SPECIFIED. DIMENSIONS ARE IN INCHES (MM).
 TOLERANCES
 .XX = ±.01 (.25)
 .XXX = ±.005 (.127)
 .XXXX = ±.0025 (.0635)
 ANGLE TOL. ±1°

IN ACCEPTING OUR DRAWINGS, BLUEPRINTS, OR SUPPORTING DOCUMENTATION FOR QUOTATION OR OTHER PURPOSES, YOU AGREE NOT TO DISCLOSE TO OTHERS THE IDEAS, INFORMATION, OR DESIGNS SHOWN HEREIN, AND THAT YOU WILL MAKE NO USE OF SAME WITHOUT PERMISSION

PROJECT REFERENCE:
 MATERIAL:
 DRAWN BY: PAUL S. MAGUIRE 05/15/02
 CHECKED BY: JOHN LUTZEN 05/22/02
 APPROVED BY: JOHN LUTZEN 05/22/02

HUBBELL
 Hubbell Premise Wiring
 HUBBELL INCORPORATED (Delaware)
 14 Lord's Hill Road, Stonington, Connecticut 06378

TITLE: FIBER OPTIC PRODUCTS
 ADAPTER, MT-RJ SC STYLE MM

SIZE: C DRAWING NO.: C11446 REV.: C
 SCALE: 1/1 SHEET 1 OF 1