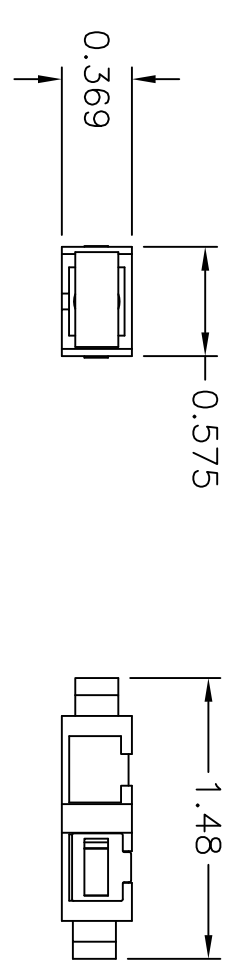
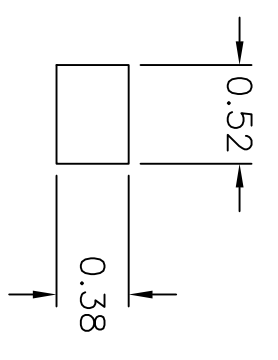
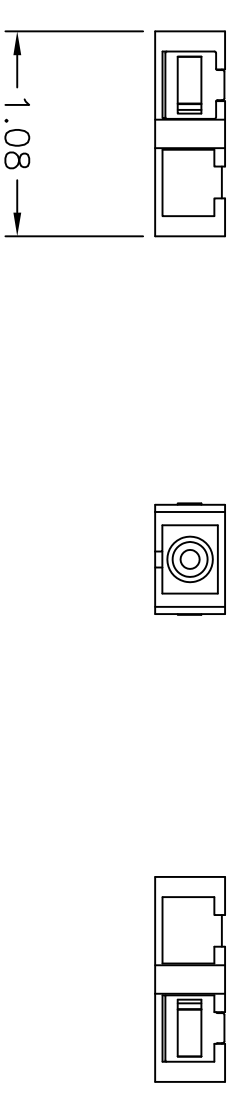
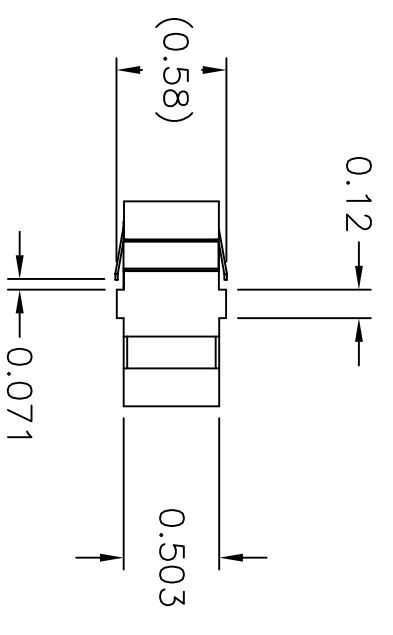


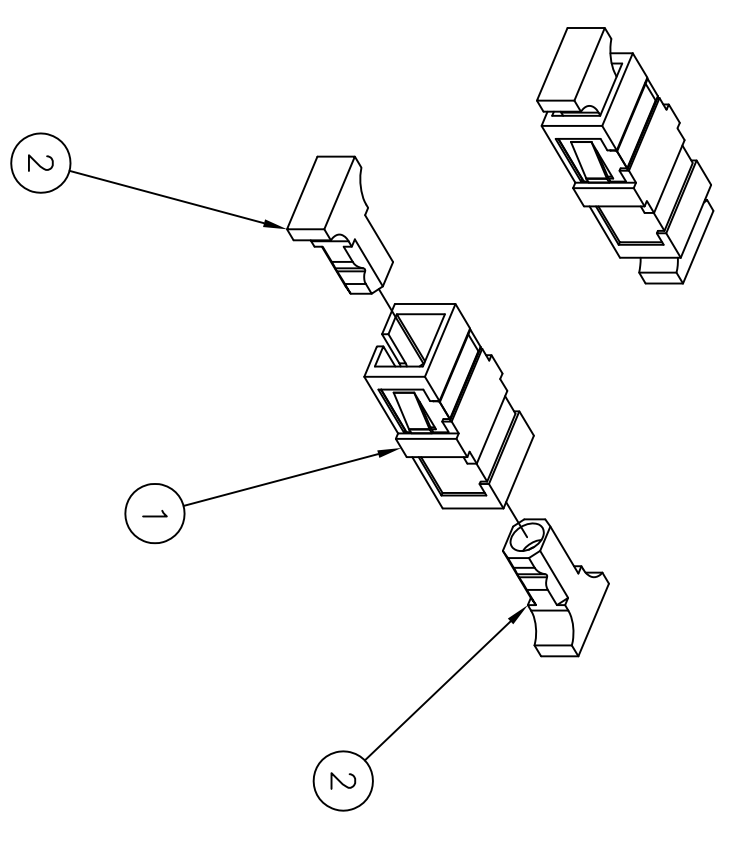
ITEM NO.	DESCRIPTION	QTY.
1	ADAPTER, SC OR SC/APC SIMPLEX	1
2	SC DUST CAP	2



CATALOG NUMBER	HOUSING COLOR	DESCRIPTION	SPLIT SLEEVE MATERIAL
FASCAC6	GREEN	ADAPTER, SC/APC SIMPLEX	ZIRCONIA
FASCSSC12R	RED	ADAPTER, SC/PC SIMPLEX	ZIRCONIA
FASCSSC12Y	YELLOW	ADAPTER, SC/PC SIMPLEX	ZIRCONIA
FASCSSC12OR	ORANGE	ADAPTER, SC/PC SIMPLEX	ZIRCONIA
FASCSSC12GN	GREEN	ADAPTER, SC/PC SIMPLEX	ZIRCONIA
FASCSSC12B	BLUE	ADAPTER, SC/PC SIMPLEX	ZIRCONIA
FASCSSC12BK	BLACK	ADAPTER, SC/PC SIMPLEX	ZIRCONIA
FASCSSC12BE	BEIGE	ADAPTER, SC/PC SIMPLEX	ZIRCONIA
FASCSSC12AQ	AQUA	ADAPTER, SC/PC SIMPLEX	ZIRCONIA
FASCSSC12AQ	AQUA	ADAPTER, SC SIMPLEX	PHOS BRONZE
FASCSSC12BE	BEIGE	ADAPTER, SC SIMPLEX	PHOS BRONZE
FASCSSC12BK	BLACK	ADAPTER, SC SIMPLEX	PHOS BRONZE
FASCSSC12OR	ORANGE	ADAPTER, SC SIMPLEX	PHOS BRONZE
FASCSSC12R	RED	ADAPTER, SC SIMPLEX	PHOS BRONZE
FASCSSC12Y	YELLOW	ADAPTER, SC SIMPLEX	PHOS BRONZE
FASCSSC12GN	GREEN	ADAPTER, SC SIMPLEX	PHOS BRONZE
FASCSSC12B	BLUE	ADAPTER, SC SIMPLEX	PHOS BRONZE



RECOMMENDED  
PANEL CUTOUT



NOTES:

- ADAPTERS SUPPLIED WITH DUST CAPS INSTALLED.
- ADAPTER MATERIAL IS UL-V0 ENGINEERING THERMOPLASTIC.
- CLIP MATERIAL IS STAINLESS STEEL.
- SPLIT SLEEVE MATERIAL – SEE TABLE ZIRCONIA COMPATIBLE WITH BOTH MULTIMODE AND SINGLEMODE FIBER. PHOSPHOR BRONZE COMPATIBLE WITH MULTIMODE FIBER ONLY.
- SPECIFICATIONS SUBJECT TO CHANGE WITHOUT NOTICE.

REV.	ECN	DATE	DESCRIPTION	CHG BY	APPD BY
6	17150	10/17/11	ADDED/UPDATED CATALOGS	CG	

Created on AUTOCAD

**HUBBELL**  
Hubbell Premise Wiring  
HUBBELL INCORPORATED (Delaware)  
14 Lord's Hill Road, Stonington, Connecticut 06378

**FIBER OPTIC PRODUCTS**  
ADAPTER, SC SIMPLEX  
**11399C**

DRAWN BY: PAUL S. MAGUIRE 05/15/02  
CHECKED BY: JOHN LUTZEN 05/22/02  
APPROVED BY: JOHN LUTZEN 05/22/02

TITLE: FIBER OPTIC PRODUCTS  
ADAPTER, SC SIMPLEX

SIZE: C  
DRAWING NO.: 11399C  
SCALE: 1/1  
SHEET 1 OF 1

REVISIONS:  
REV. 6

DIMENSIONING AND TOLERANCE PER ANSI Y14.5M-1982  
UNLESS OTHERWISE SPECIFIED,  
DIMENSIONS ARE IN INCHES (MM).  
TOLERANCES:  
.XX = ±.01 (.25)  
.XXX = ±.005 (.127)  
.XXXX = ±.0025 (.0635)  
ANGLE TOL #1°

IN ACCEPTING OUR DRAWINGS,  
BLUEPRINTS, OR SUPPORTING  
DOCUMENTATION FOR QUOTATION  
OR OTHER PURPOSES, YOU AGREE  
NOT TO DISCLOSE TO OTHERS  
THE IDEAS, INFORMATION, OR  
DESIGNS SHOWN HEREIN, AND  
THAT YOU WILL MAKE NO USE  
OF SAME WITHOUT PERMISSION