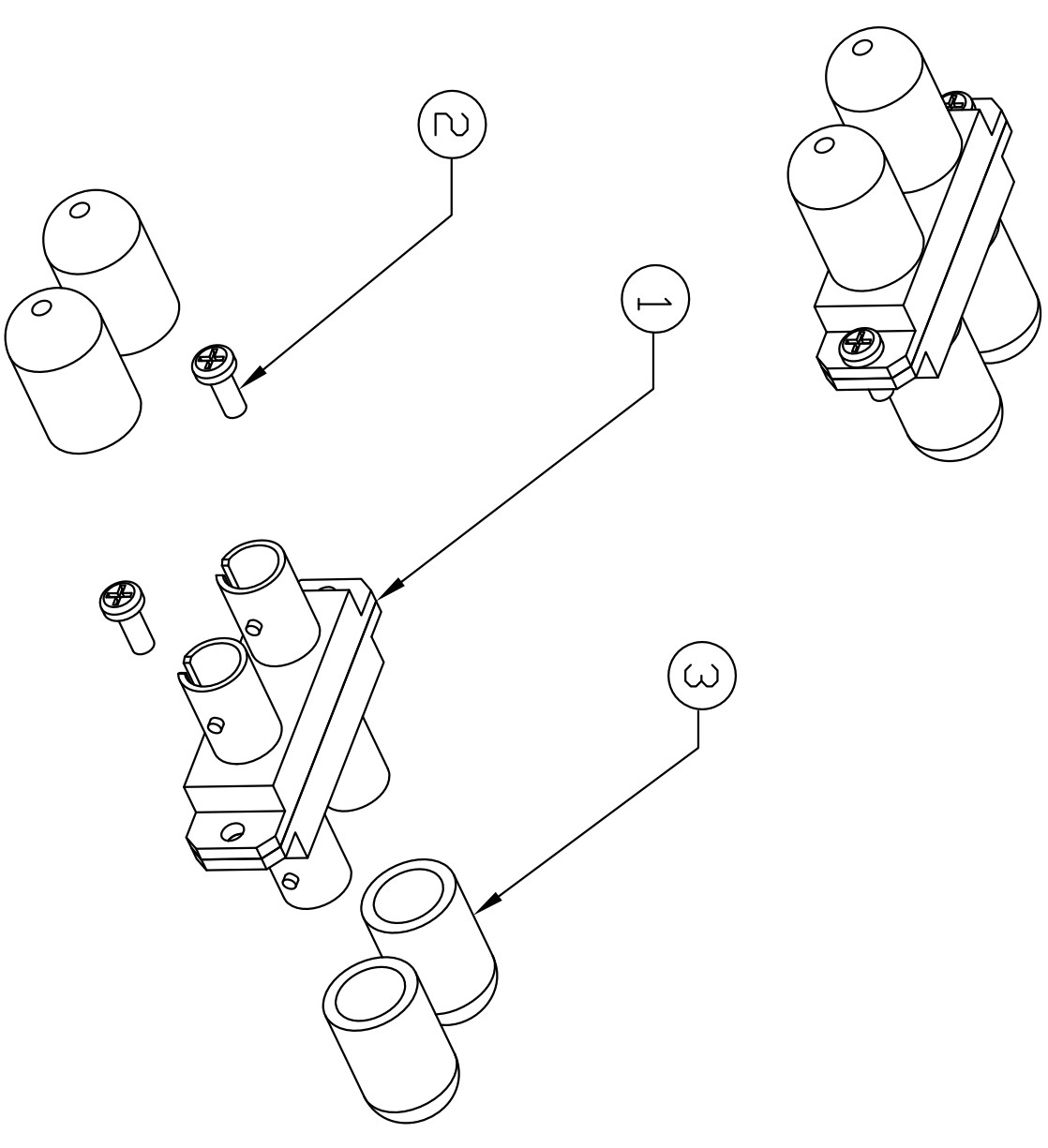
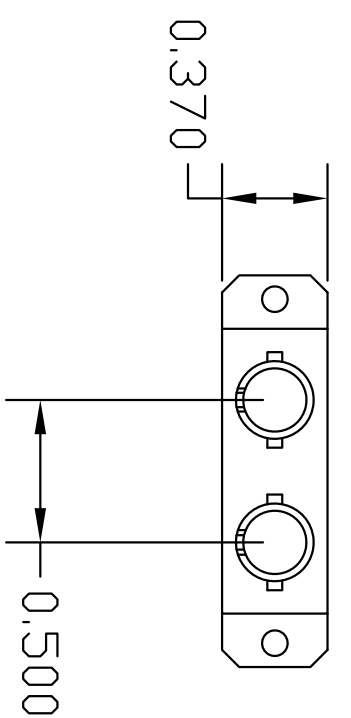
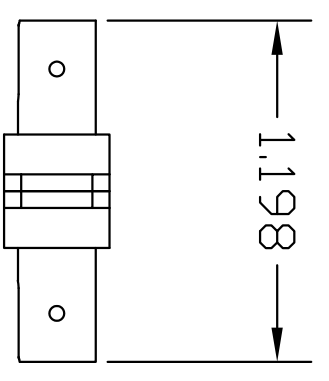
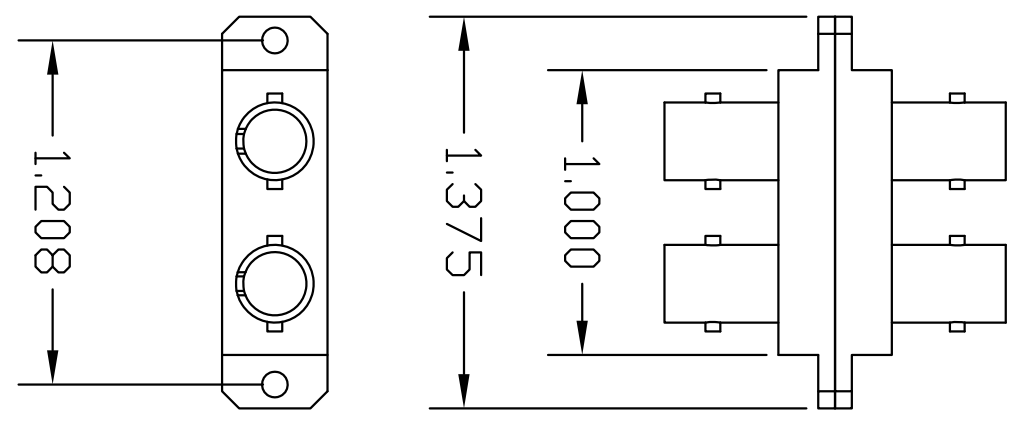


ITEM NO.	DESCRIPTION	QTY.
1	ADAPTER, ST DUPLEX	6
2	SCREW, ADAPTER	12
3	DUST CAP, ST	24

CATALOG NUMBER	ADAPTER COLOR	SPLIT SLEEVE MATERIAL
FASTDMPB6	BLUE	PHOS-BRONZE
FASTDSS6	BLUE	ZIRCONIA
FASTDMS6	BEIGE	ZIRCONIA
FASTDMS6BK	BLACK	ZIRCONIA



- NOTES:
- ADAPTERS SUPPLIED WITH (2) SCREWS AND DUST CAPS INSTALLED, 6 ADAPTERS PER BOX.
  - ADAPTER MATERIAL IS UL-V0 ENGINEERING THERMOPLASTIC.
  - HIGH PRECISION ALIGNMENT SLEEVES - SEE TABLE FOR MATERIAL, ZIRCONIA COMPATIBLE WITH BOTH SINGLEMODE AND MULTIMODE FIBER, PHOSPHOR BRONZE COMPATIBLE WITH MULTIMODE FIBER ONLY.
  - SPECIFICATIONS SUBJECT TO CHANGE WITHOUT NOTICE.

REV.	ECN	DATE	DESCRIPTION	CHG BY	APPD BY
D	17038	3/15/11	UPDATED NOTE #3	CG	

Created on AUTOCAD

DIMENSIONING AND TOLERANCE PER ANSI Y14.5M-1982 UNLESS OTHERWISE SPECIFIED, DIMENSIONS ARE IN INCHES (MM). TOLERANCES:  
 .XX = ±.01 (.25)  
 .XXX = ±.005 (.127)  
 .XXXX = ±.0025 (.0635)  
 ANGLE TOL ±1°

IN ACCEPTING OUR DRAWINGS, BLUEPRINTS, OR SUPPORTING DOCUMENTATION FOR QUOTATION OR OTHER PURPOSES, YOU AGREE NOT TO DISCLOSE TO OTHERS THE IDEAS, INFORMATION, OR DESIGNS SHOWN HEREIN, AND THAT YOU WILL MAKE NO USE OF SAME WITHOUT PERMISSION.

PROJECT REFERENCE: 07-001

MATERIAL: SEE NOTES

DRAWN BY: C. DUSSAULT 3/19/07

CHECKED BY:

APPROVED BY:

TITLE: FIBER ADAPTER ST DUPLEX

Hubbell Premise Wiring  
 HUBBELL INCORPORATED (Delaware)  
 14 Lord's Hill Road, Stonington, Connecticut 06378

SIZE: C DRAWING NO.: HWS12516C

SCALE: 1/1 SHEET 1 OF 1

REV: D