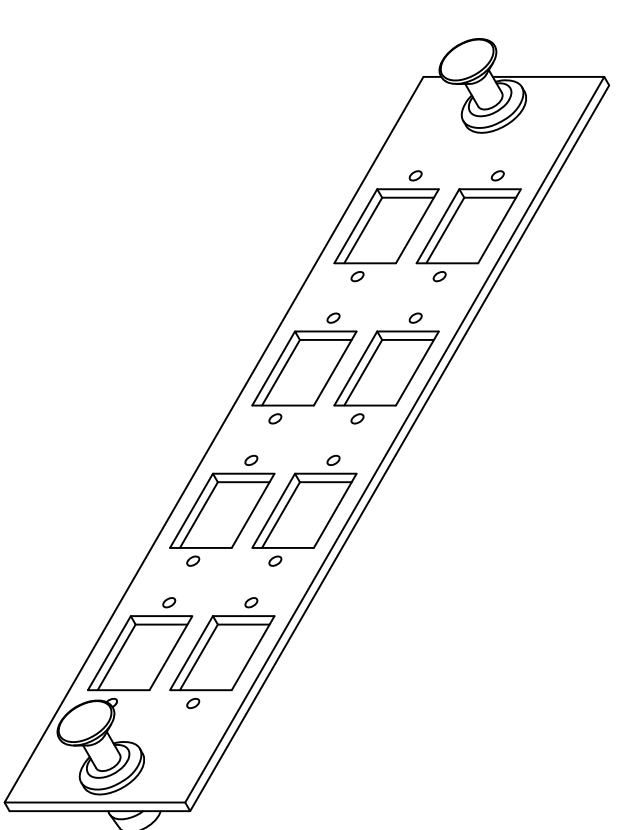
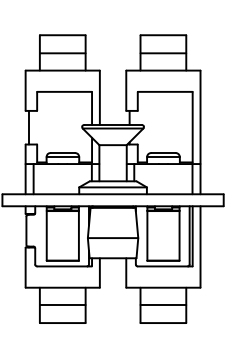
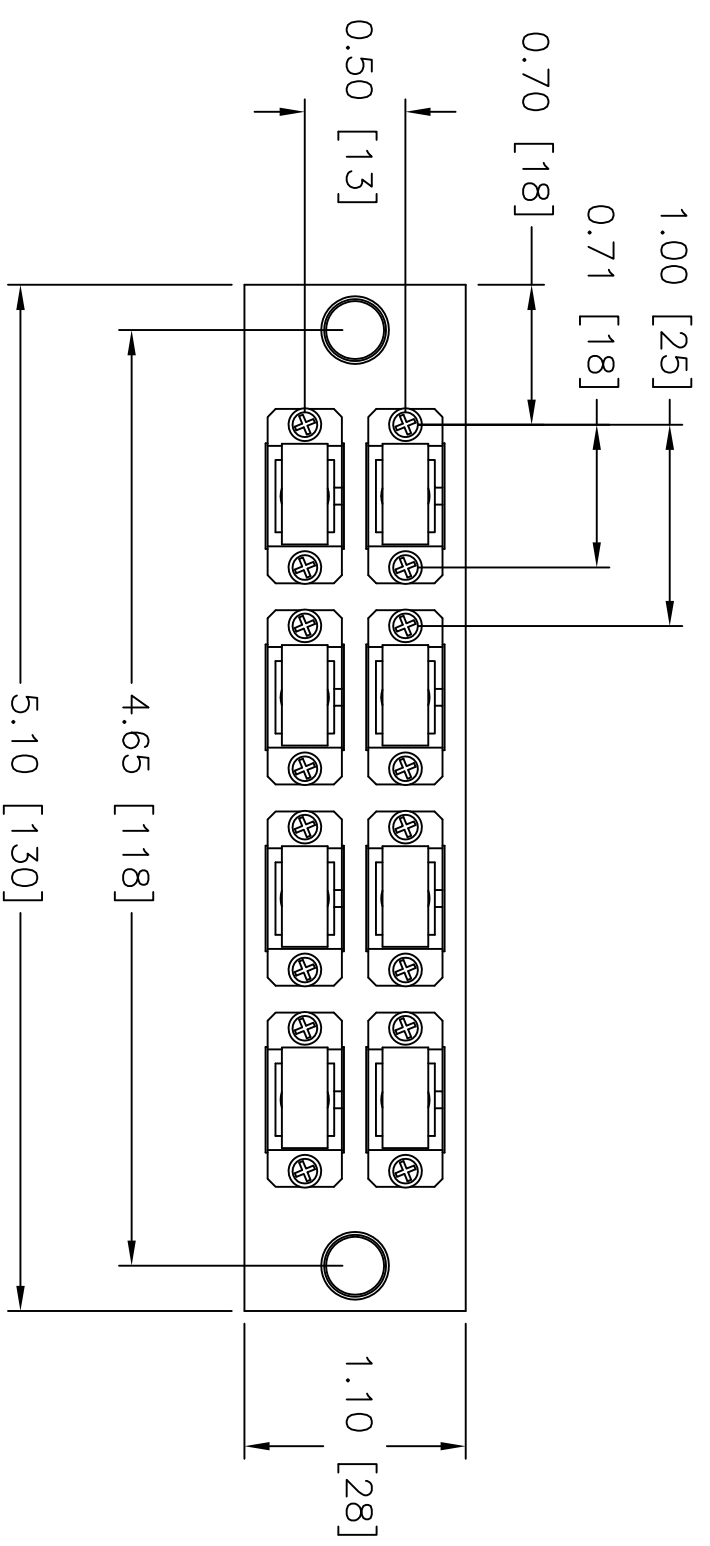
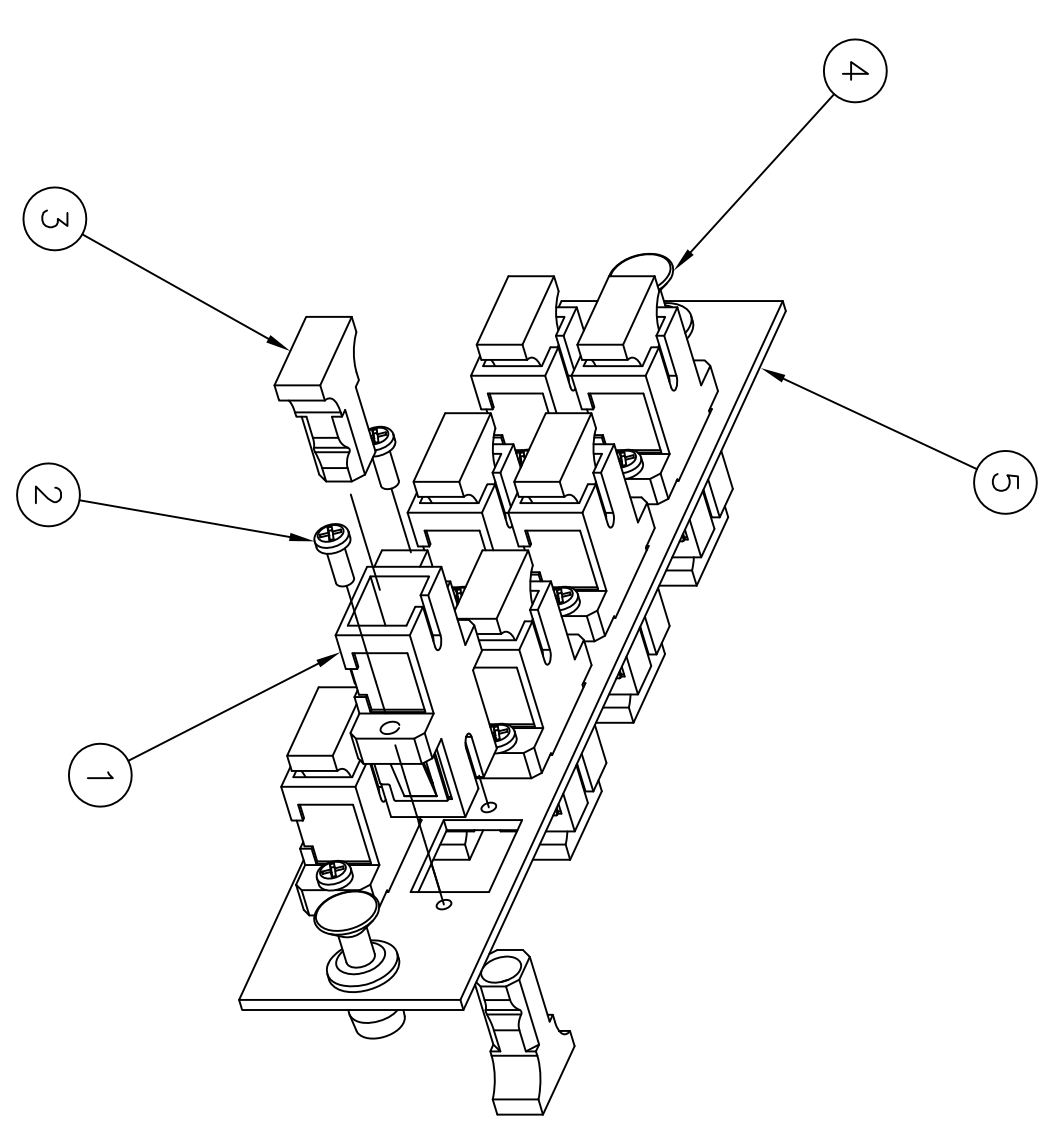
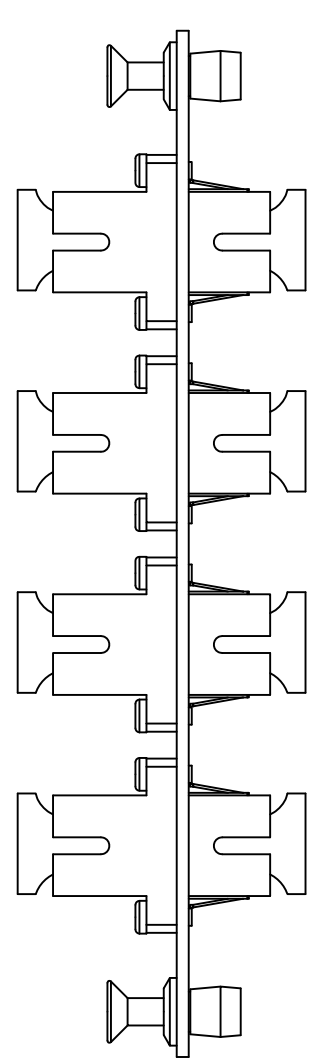


ITEM NO.	DESCRIPTION	QTY.
1	ADAPTER, SC SIMPLEX (BLUE)	8
2	SCREW, ADAPTER	16
3	DUST CAP	16
4	NYLATCH PUSH FASTENER	2
5	FSP PANEL 8 PORT SC	1

CATALOG NUMBER	DESCRIPTION	SPLIT SLEEVE MATERIAL
FSPSC8	8 PORT FSP PANEL WITH SC SIMPLEX ADAPTERS	PHOS-BRONZE
FSPSCSS8	8 PORT FSP PANEL WITH SC SIMPLEX ADAPTERS	ZIRCONIA
FSPSC8X	UNLOADED 8 PORT FSP PANEL FOR SC SIMPLEX ADAPTERS	N/A



**LOADED FSP PANEL**

**UNLOADED FSP PANEL**

**NOTES:**

1. SUPPLIED WITH PUSH/PULL FASTENERS FOR EASY INSTALLATION/REMOVAL.
2. PANELS FIT INTO HUBBELL WALL MOUNT AND RACK MOUNT CABINETS.
3. BLACK ELECTROSTATICALLY APPLIED POWDER COAT.
4. ADAPTERS SUPPLIED WITH DUST CAPS INSTALLED
5. SPLIT SLEEVE MATERIAL – SEE TABLE ZIRCONIA COMPATIBLE WITH BOTH SINGLEMODE AND MULTIMODE FIBER. PHOSPHOR BRONZE COMPATIBLE WITH MULTIMODE FIBER ONLY.
6. SPECIFICATIONS SUBJECT TO CHANGE WITHOUT NOTICE.

REV.	ECN	DATE	DESCRIPTION	CHG BY	APPD BY
D	17038	3/21/11	UPDATED NOTE #5	CG	

Created on AUTOCAD

DIMENSIONING AND TOLERANCE PER ANSI Y14.5M-1982 UNLESS OTHERWISE SPECIFIED. DIMENSIONS ARE IN INCHES (MM).  
 TOLERANCES  
 .XX = ±.01 (.25)  
 .XXX = ±.005 (.127)  
 .XXXX = ±.0025 (.0635)  
 ANGLE TOL. ±1°

PROJECT REFERENCE:  
 MATERIAL: .0598" CRS WITH BLACK POWDER COAT FINISH

DRAWN BY: PAUL S. MAGUIRE 01/11/02  
 CHECKED BY:  
 APPROVED BY: JOHN LUTZEN 03/06/02

**HUBBELL**  
 Hubbell Premise Wiring  
 HUBBELL INCORPORATED (Delaware)  
 14 Lord's Hill Road, Stonington, Connecticut 06378

TITLE: ASSY, 8 PORT FSP PANEL, WITH SC SIMPLEX ADAPTERS

SIZE: C  
 DRAWING NO.: C11429  
 SCALE: 1/1  
 SHEET 1 OF 1

REV. D