

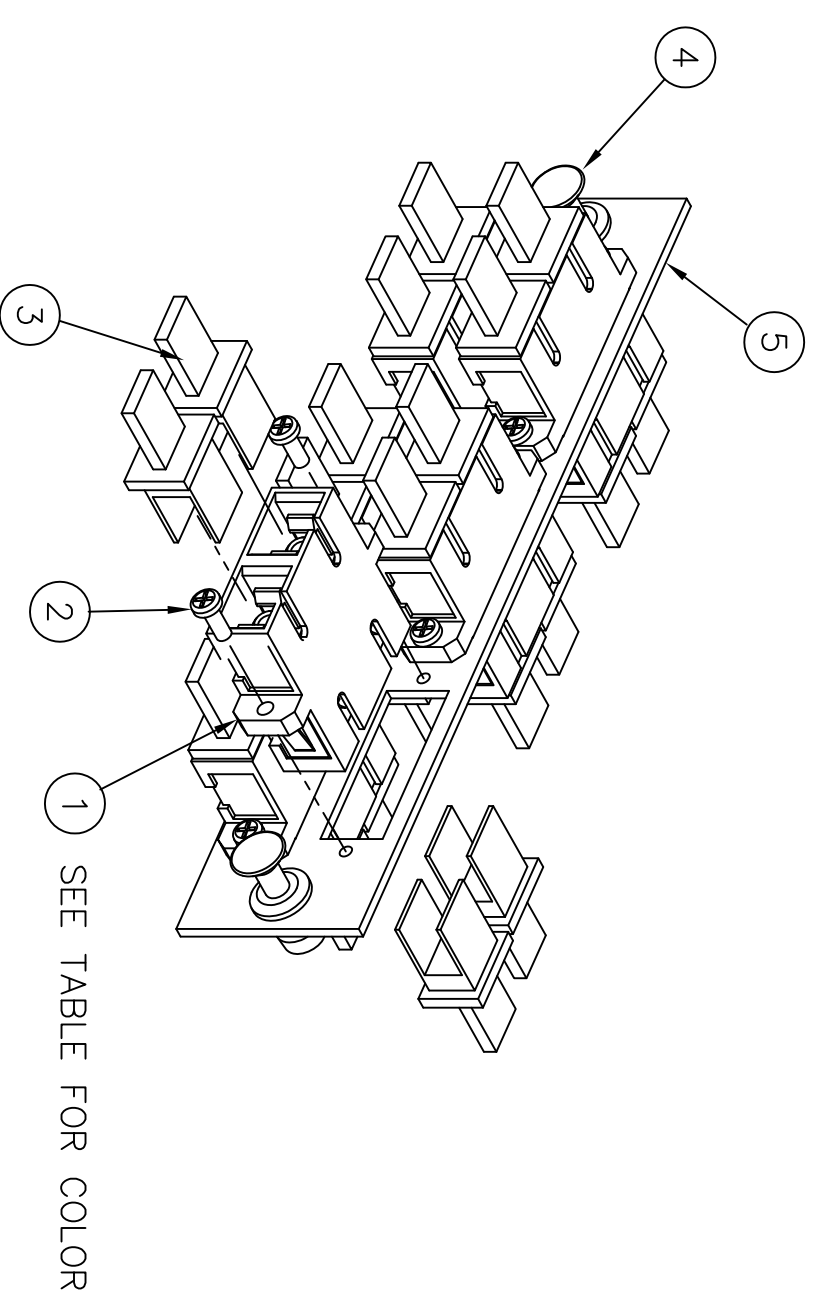
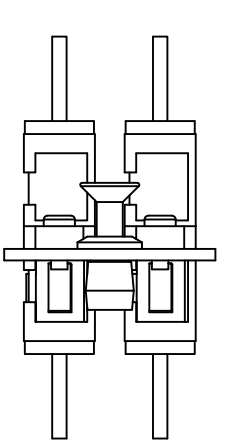
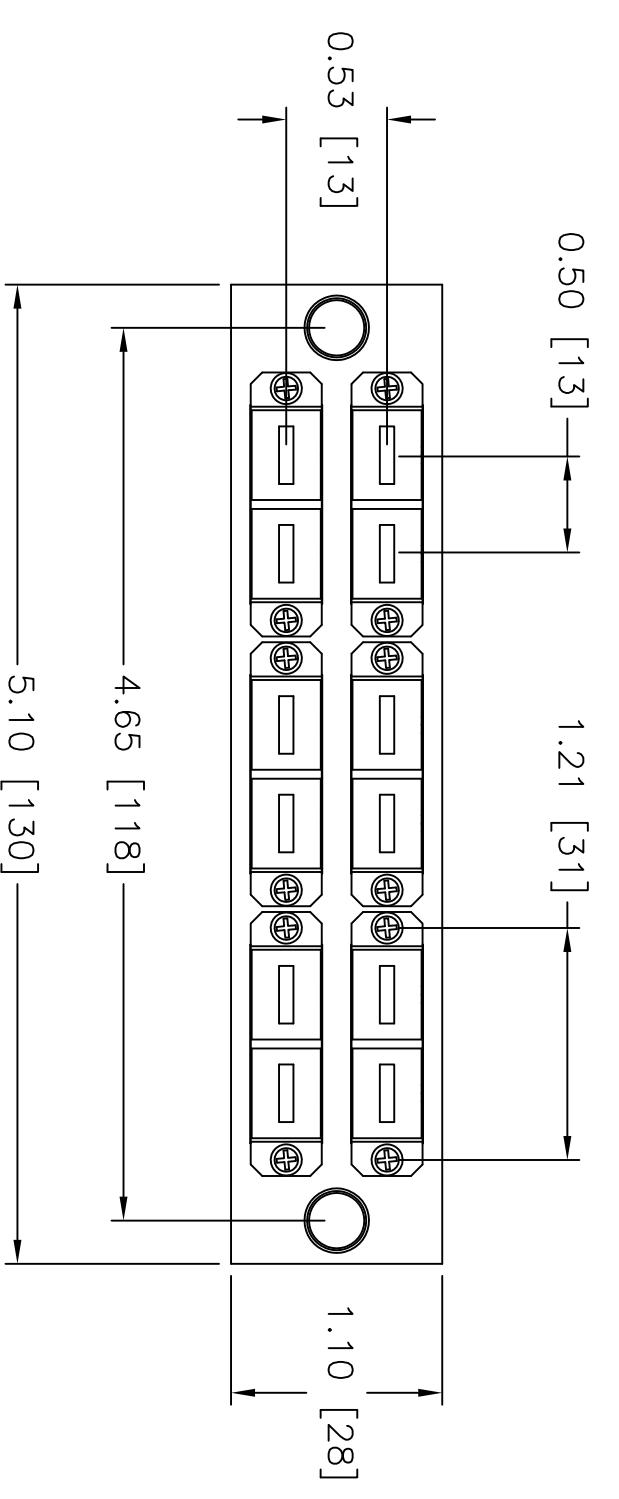
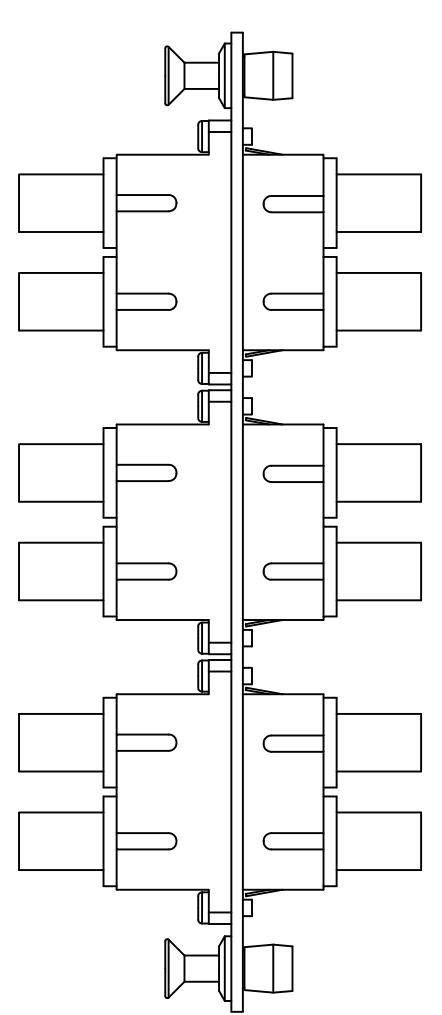
ITEM NO.	DESCRIPTION	QTY.
1	ADAPTER, SC DUPLEX (SEE TABLE FOR COLOR)	6
2	SCREW, ADAPTER	12
3	DUST CAP, SC	24
4	NYLATCH PUSH FASTENER	2
5	FSP PANEL 12 PORT SC DUPLEX	1

CATALOG NUMBER	DESCRIPTION
FSPSCD6x	UNLOADED PANEL FOR 6 SC DUPLEX ADAPTERS
FSPSCDx6yy	LOADED PANEL WITH 6 SC DUPLEX ADAPTERS

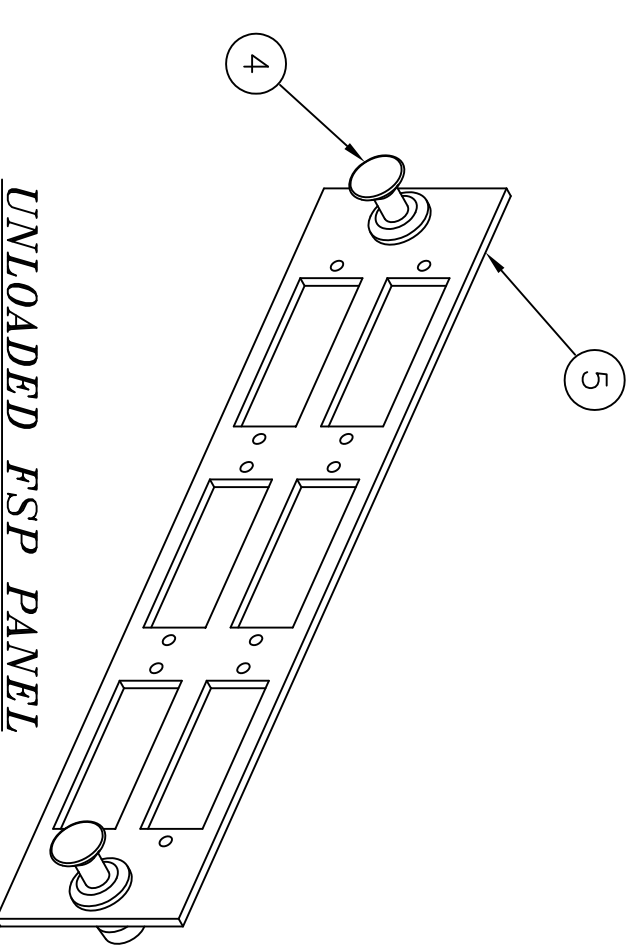
CATALOG NUMBER LEGEND:

- "x": M - PHOS-BRONZE SLEEVE, MULTIMODE APPLICATION
S - ZIRCONIA SLEEVE, SINGLEMODE AND MULTIMODE APPLICATION

- "yy":
AQ - AQUA
BE - BEIGE
BK - BLACK
B - BLUE
GN - GREEN
OR - ORANGE
Y - YELLOW
R - RED



LOADED FSP PANEL



UNLOADED FSP PANEL

NOTES:

1. SUPPLIED WITH PUSH/PULL FASTENERS FOR EASY INSTALLATION/REMOVAL.
2. PANELS FIT INTO HUBBELL WALL MOUNT AND RACK MOUNT CABINETS.
3. BLACK ELECTROSTATICALLY APPLIED POWDER COAT.
4. ADAPTERS SUPPLIED WITH DUST CAPS INSTALLED
5. SEE TABLE FOR CATALOG NO.'S FOR COLORED ADAPTERS OR UNLOADED PANELS.
6. SPLIT SLEEVE MATERIAL - SEE TABLE ZIRCONIA COMPATIBLE WITH BOTH SINGLEMODE AND MULTIMODE FIBER. PHOSPHOR BRONZE COMPATIBLE WITH MULTIMODE FIBER ONLY.
7. SPECIFICATIONS SUBJECT TO CHANGE WITHOUT NOTICE.

Created on AUTOCAD	
<p>DIMENSIONING AND TOLERANCE PER ANSI Y14.5M-1982 UNLESS OTHERWISE SPECIFIED, DIMENSIONS ARE IN INCHES (MM). TOLERANCES .XX = ±.01 (.25) .XXX = ±.005 (.127) .XXXX = ±.0025 (.0635) ANGLE TOL ±1°</p>	<p>PROJECT REFERENCE: MATERIAL: .0598" CRS WITH BLACK POWDER COAT FINISH</p>
<p>IN ACCEPTING OUR DRAWINGS, BLUEPRINTS, OR SUPPORTING DOCUMENTATION FOR QUOTATION OR OTHER PURPOSES, YOU AGREE NOT TO DISCLOSE TO OTHERS THE IDEAS, INFORMATION, OR DESIGNS SHOWN HEREIN, AND THAT YOU WILL MAKE NO USE OF SAME WITHOUT PERMISSION</p>	<p>DRAWN BY: PAUL S. MAGUIRE 01/10/02 CHECKED BY: APPROVED BY:</p>
<p>Hubbell Premise Wiring HUBBELL INCORPORATED (Delaware) 14 Lord's Hill Road, Stonington, Connecticut 06378</p>	
<p>TITLE: ASSY, 12 PORT FSP PANEL, WITH SC DUPLEX ADAPTERS, SCREW MOUNT</p>	
<p>SIZE: C DRAWING NO. 11168C</p>	<p>SCALE: N/A SHEET 1 OF 1</p>

REV.	ECN	DATE	DESCRIPTION	CHG BY	APPD BY
G	17866	05/09/12	ADDED CATALOG NUMBER LEGEND	MMA	