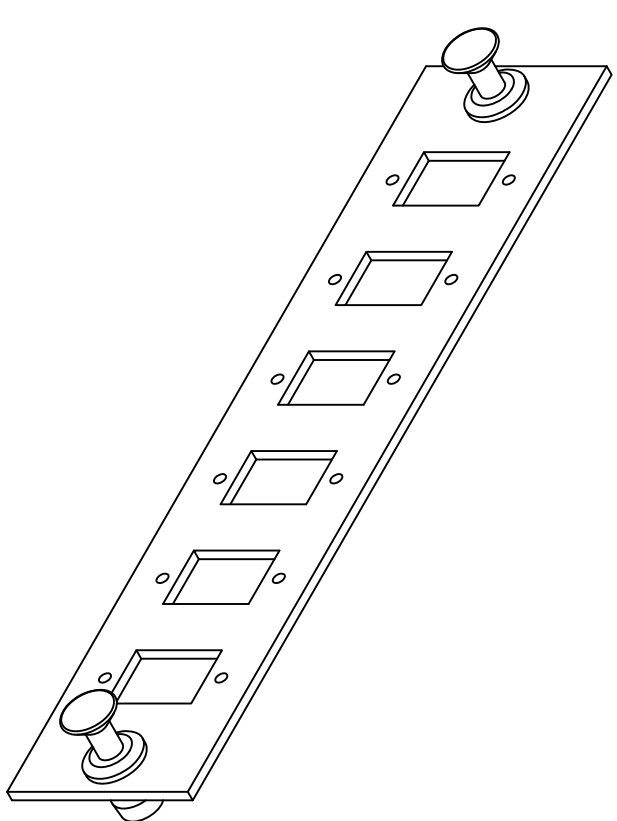
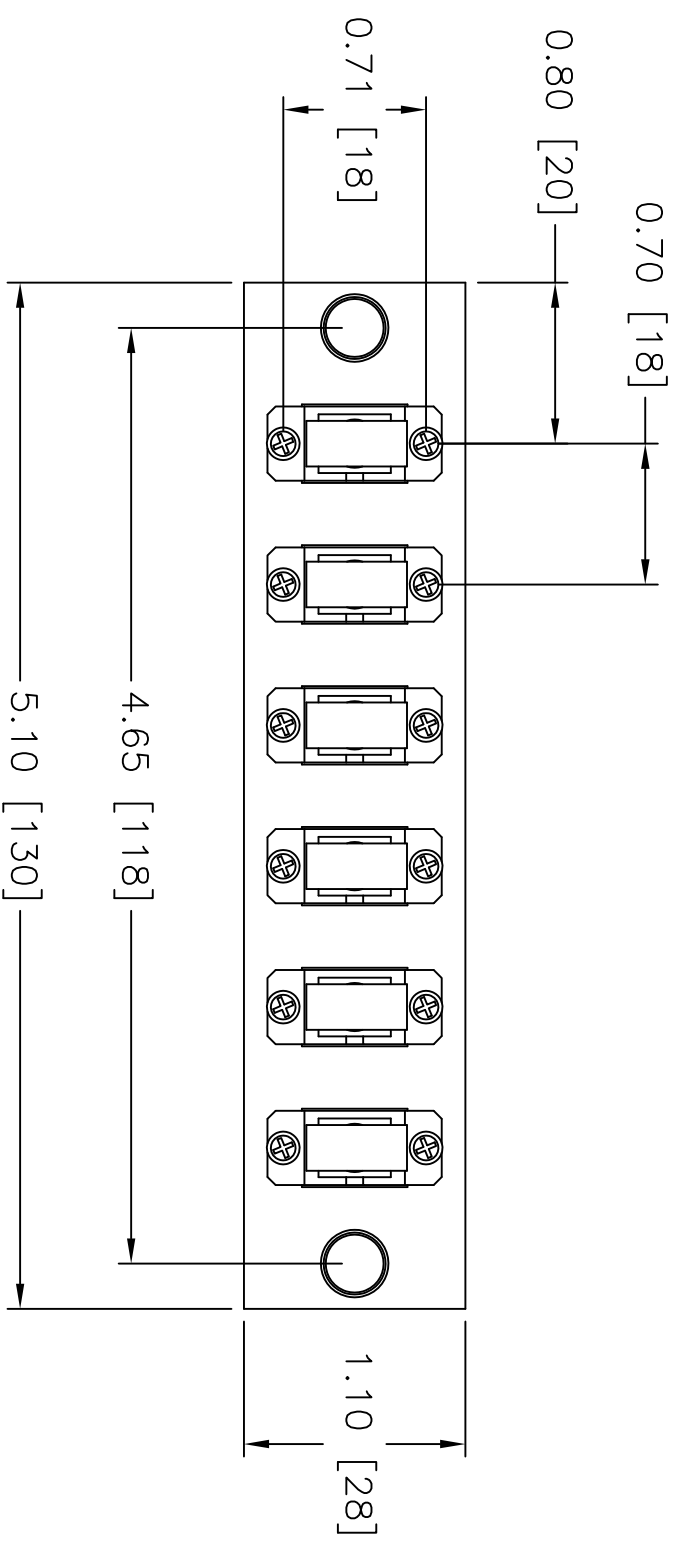
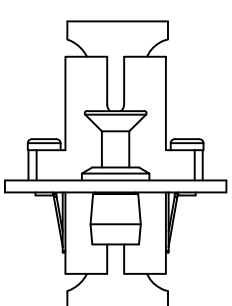
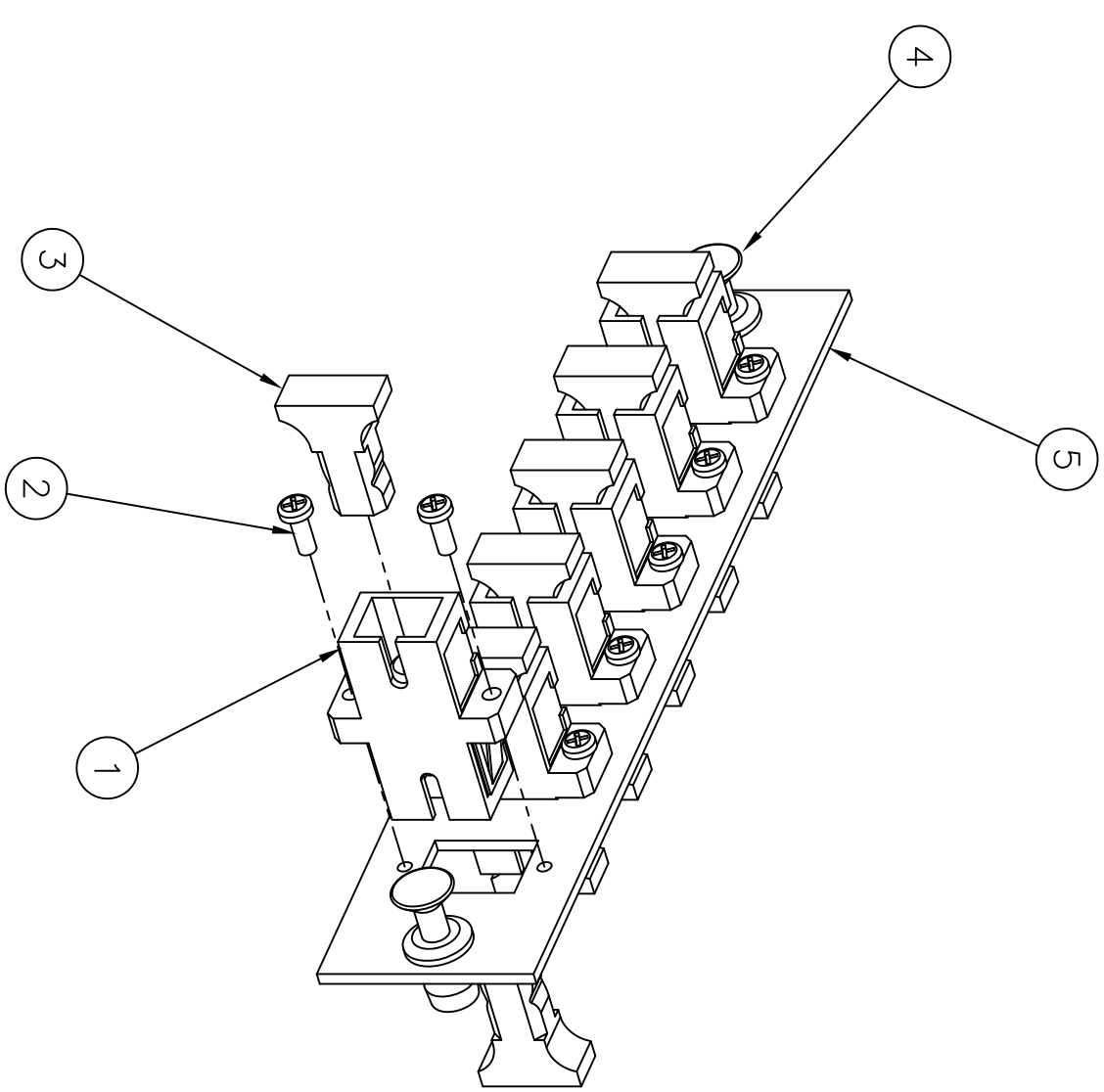
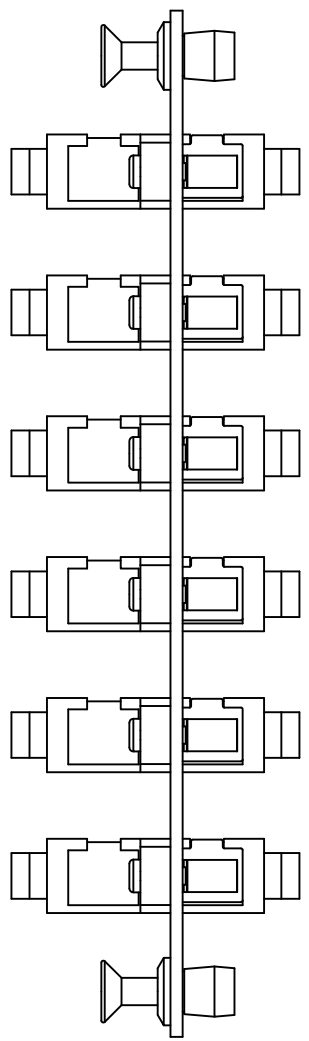


ITEM NO.	DESCRIPTION	QTY.
1	ADAPTER, SC SIMPLEX (BLUE)	6
2	SCREW, ADAPTER	12
3	DUST CAP	12
4	NYLATCH PUSH FASTENER	2
5	FSP PANEL 6 PORT SC	1

CATALOG NUMBER	DESCRIPTION	SPLIT SLEEVE MATERIAL
FSPSC6	6 PORT FSP PANEL WITH SC SIMPLEX ADAPTERS	PHOS BRONZE
FSPSCSS6	6 PORT FSP PANEL WITH SC SIMPLEX ADAPTERS	ZIRCONIA
FSPSC6X	UNLOADED 6 PORT FSP PANEL FOR SC SIMPLEX ADAPTERS	N/A



LOADED FSP PANEL

UNLOADED FSP PANEL

- NOTES:
1. SUPPLIED WITH PUSH/PULL FASTENERS FOR EASY INSTALLATION/REMOVAL.
 2. PANELS FIT INTO HUBBELL WALL MOUNT AND RACK MOUNT CABINETS.
 3. BLACK ELECTROSTATICALLY APPLIED POWDER COAT.
 4. ADAPTERS SUPPLIED WITH DUST CAPS INSTALLED
 5. SPLIT SLEEVE MATERIAL – SEE TABLE ZIRCONIA COMPATIBLE WITH BOTH SINGLEMODE AND MULTIMODE FIBER. PHOSPHOR BRONZE COMPATIBLE WITH MULTIMODE FIBER ONLY.
 6. SPECIFICATIONS SUBJECT TO CHANGE WITHOUT NOTICE.

REV.	ECN	DATE	DESCRIPTION	CHG BY	APPD BY
E	17038	3/21/11	UPDATED NOTE #5	CG	

Created on AUTOCAD

DIMENSIONING AND TOLERANCE PER
ANSI Y14.5M-1982
UNLESS OTHERWISE SPECIFIED,
DIMENSIONS ARE IN INCHES (MM).
TOLERANCES
.XX = ±.01 (.25)
.XXX = ±.005 (.127)
.XXXX = ±.0025 (.0635)
ANGLE TOL. ±1°

IN ACCEPTING OUR DRAWINGS,
BLUEPRINTS, OR SUPPORTING
DOCUMENTATION FOR QUOTATION
OR OTHER PURPOSES, YOU AGREE
NOT TO DISCLOSE TO OTHERS
THE IDEAS, INFORMATION, OR
DESIGNS SHOWN HEREIN, AND
THAT YOU WILL MAKE NO USE
OF SAME WITHOUT PERMISSION

PROJECT REFERENCE:
MATERIAL: .0598" CRS WITH
BLACK POWDER COAT
FINISH

DRAWN BY:
PAUL S. MAGUIRE 01/11/02

CHECKED BY:

APPROVED BY:
JOHN LUTZEN 03/06/02

HUBBELL
Hubbell Premise Wiring
HUBBELL INCORPORATED (Delaware)
14 Lord's Hill Road, Stonington, Connecticut 06378

TITLE:
ASSY, 6 PORT FSP PANEL,
WITH SC SIMPLEX ADAPTERS

SIZE: C
DRAWING NO.: C11428
SCALE: 1/1

SHEET 1 OF 1

REV. E