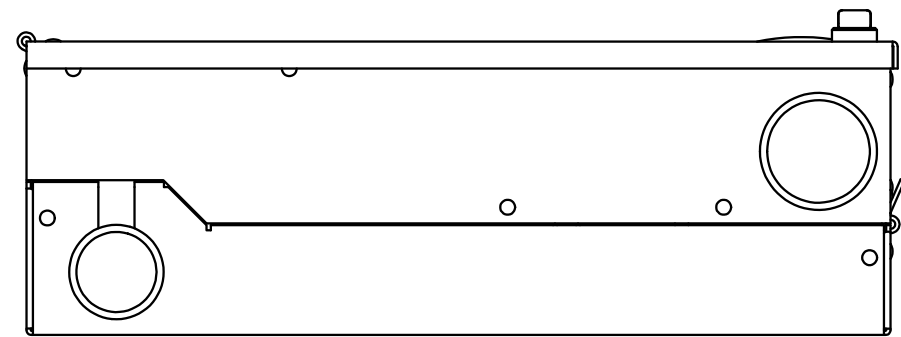
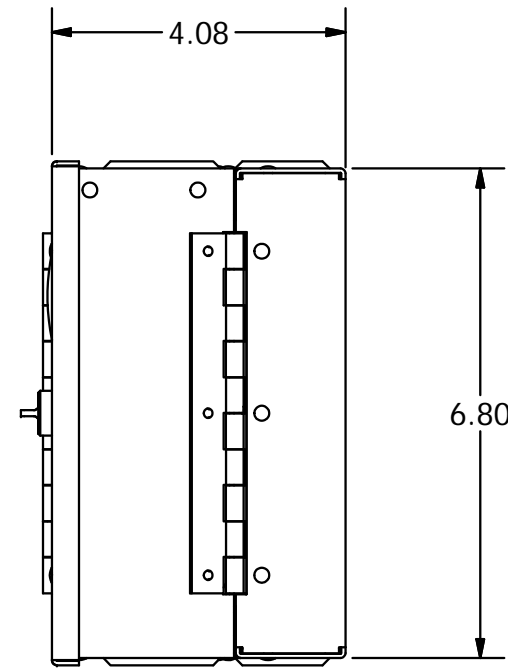
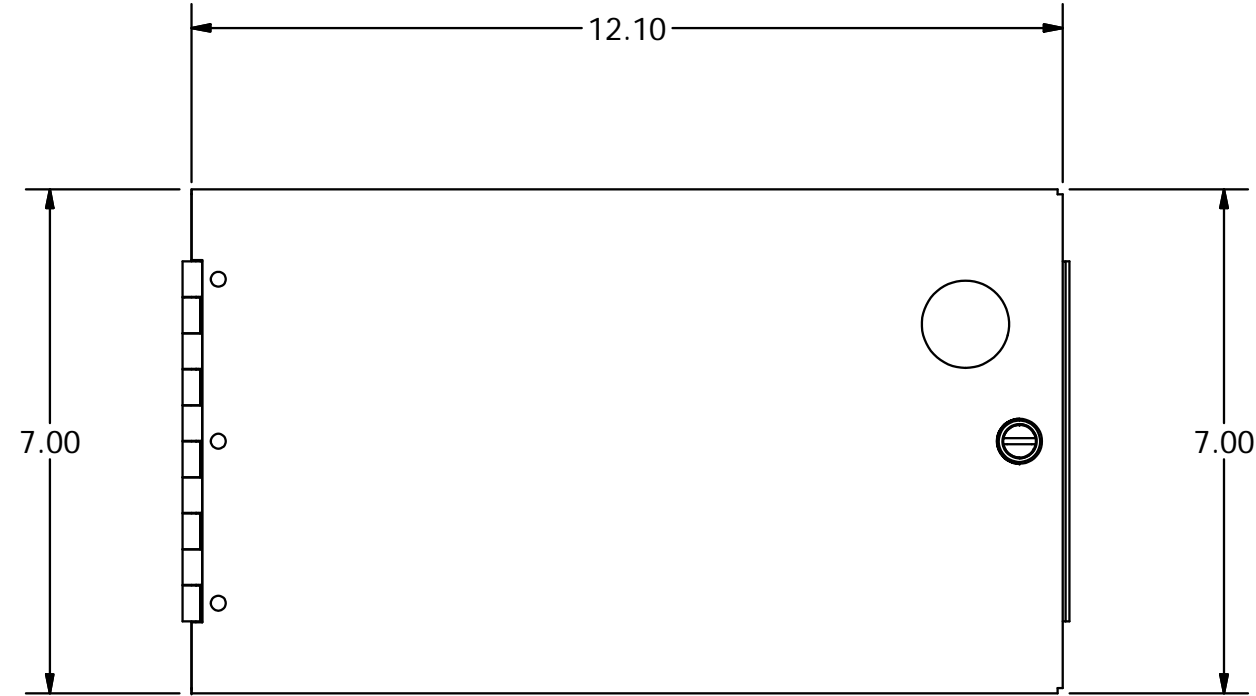
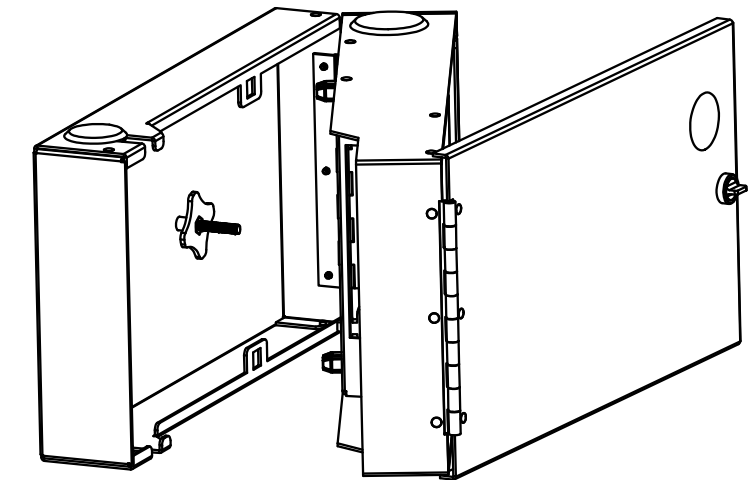
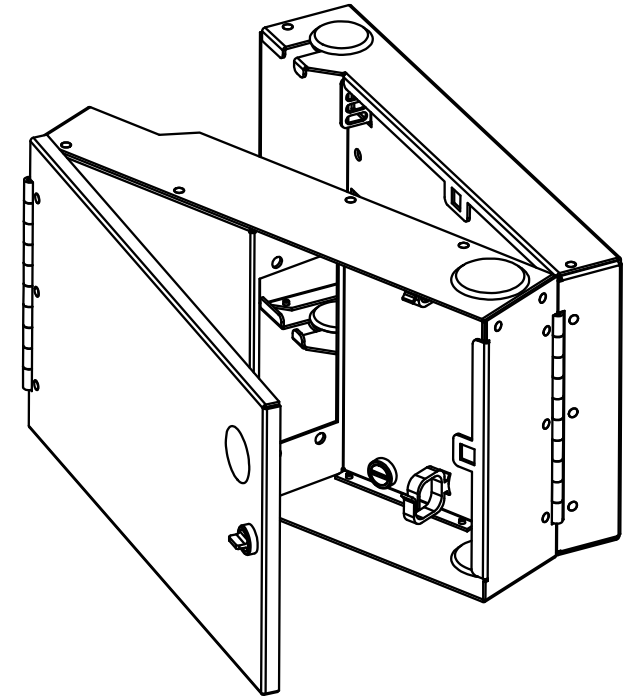
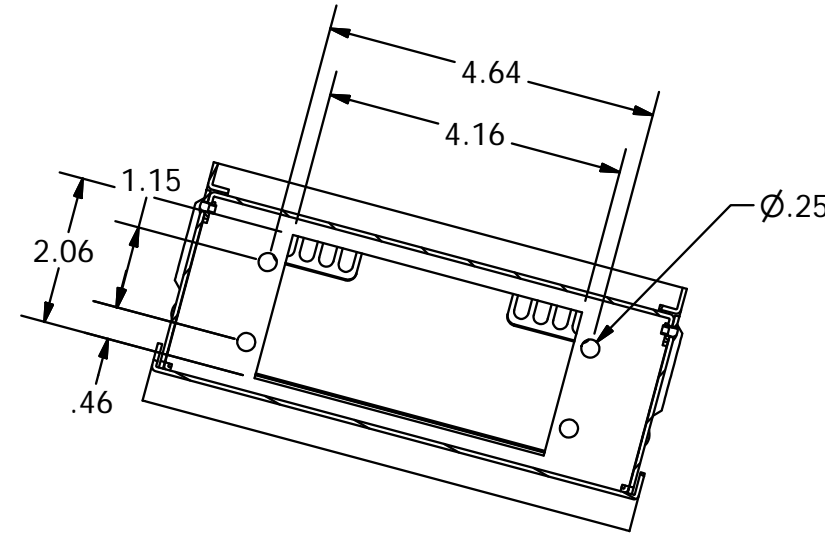
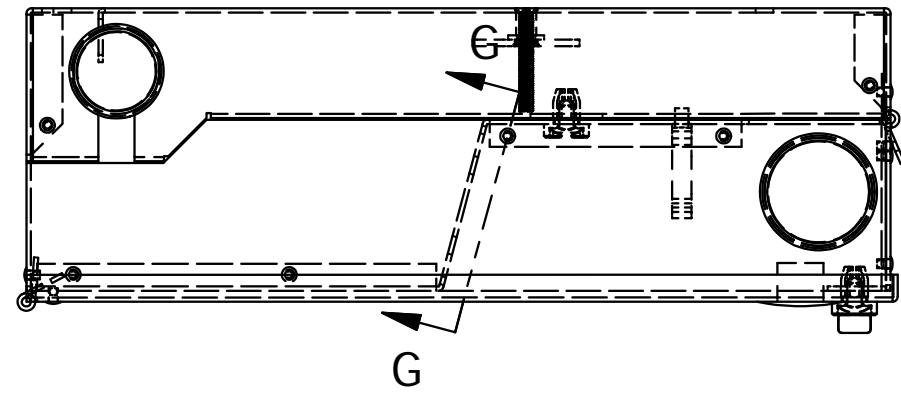



CATALOG NO.	DESCRIPTION
FTU2SPH	FIBER, WALL MOUNT, HINGED



NOTES:

1. MATERIAL: 16 Ga Al
SURFACE FINISH: BLACK POWDER COAT
2. ACCEPTS UP TO (2) STANDARD FSP PANELS
ACCOMODATES UP TO (3) 7" SPLICE TRAYS
3. SPECIFICATIONS SUBJECT TO CHANGE WITHOUT NOTICE.

Created on INVENTOR	DIMENSIONING AND TOLERANCE PER ANSI Y14.5M-1982 UNLESS OTHERWISE SPECIFIED, DIMENSIONS ARE IN INCHES (MM). TOLERANCES: XX = ±.01 (.25) .XXX = ±.005 (.127) .XXXX = ±.0025 (.0635) ANGLE TOL ±1°		PROJECT REFERENCE: NPD 00160		 Hubbell Premise Wiring HUBBELL INCORPORATED (Delaware) 23 CLARA DRIVE, SUITE 103 MYSTIC, CT 06355		
	IN ACCEPTING OUR DRAWINGS, BLUEPRINTS, OR SUPPORTING DOCUMENTATION FOR QUOTATION OR OTHER PURPOSES, YOU AGREE NOT TO DISCLOSE TO OTHERS THE IDEAS, INFORMATION, OR DESIGNS SHOWN HEREIN, AND THAT YOU WILL MAKE NO USE OF SAME WITHOUT PERMISSION		MATERIAL: SEE NOTES			TITLE: FIBER WALL MOUNT CABINET, HINGED	
			DRAWN BY: MMA 09/27/16		SIZE C	DRAWING NO. HWS14702C	REV. 1
			CHECKED BY:		SCALE: N/A SHEET 1 OF 1		
		APPROVED BY:					

1	21498	10/28/16	INITIAL RELEASE	MMA	DO
REV.	ECN	DATE	DESCRIPTION	CHG BY	APPD BY