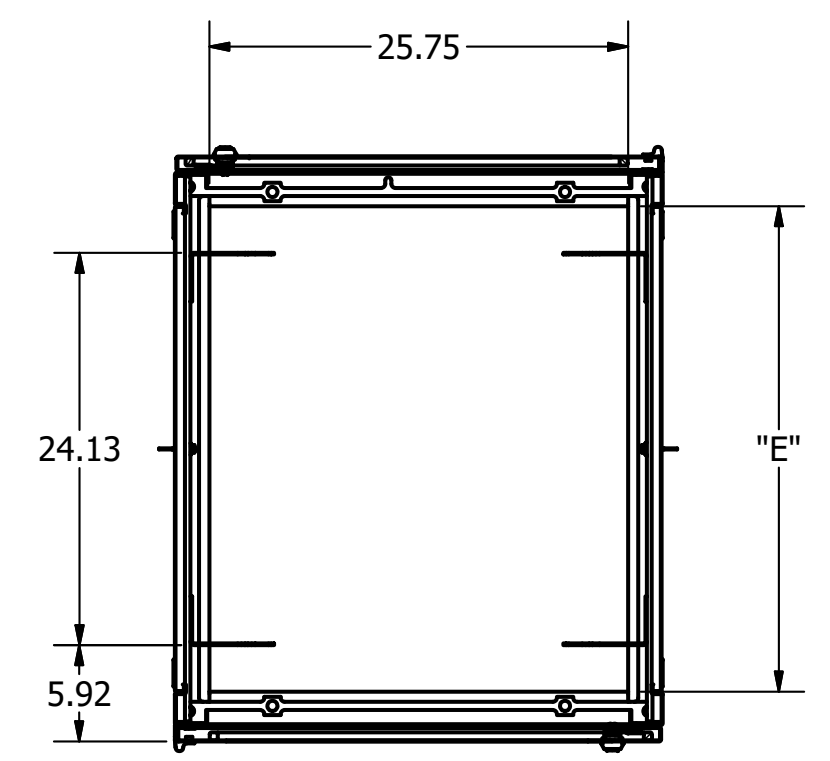
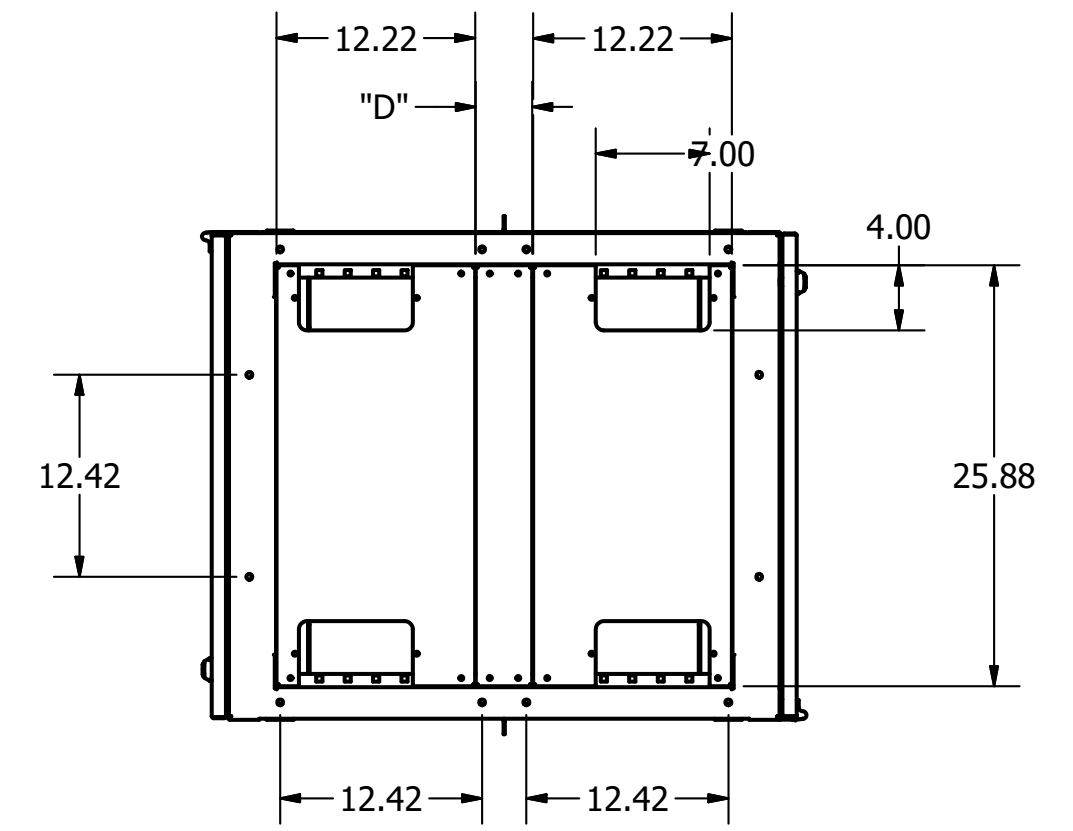


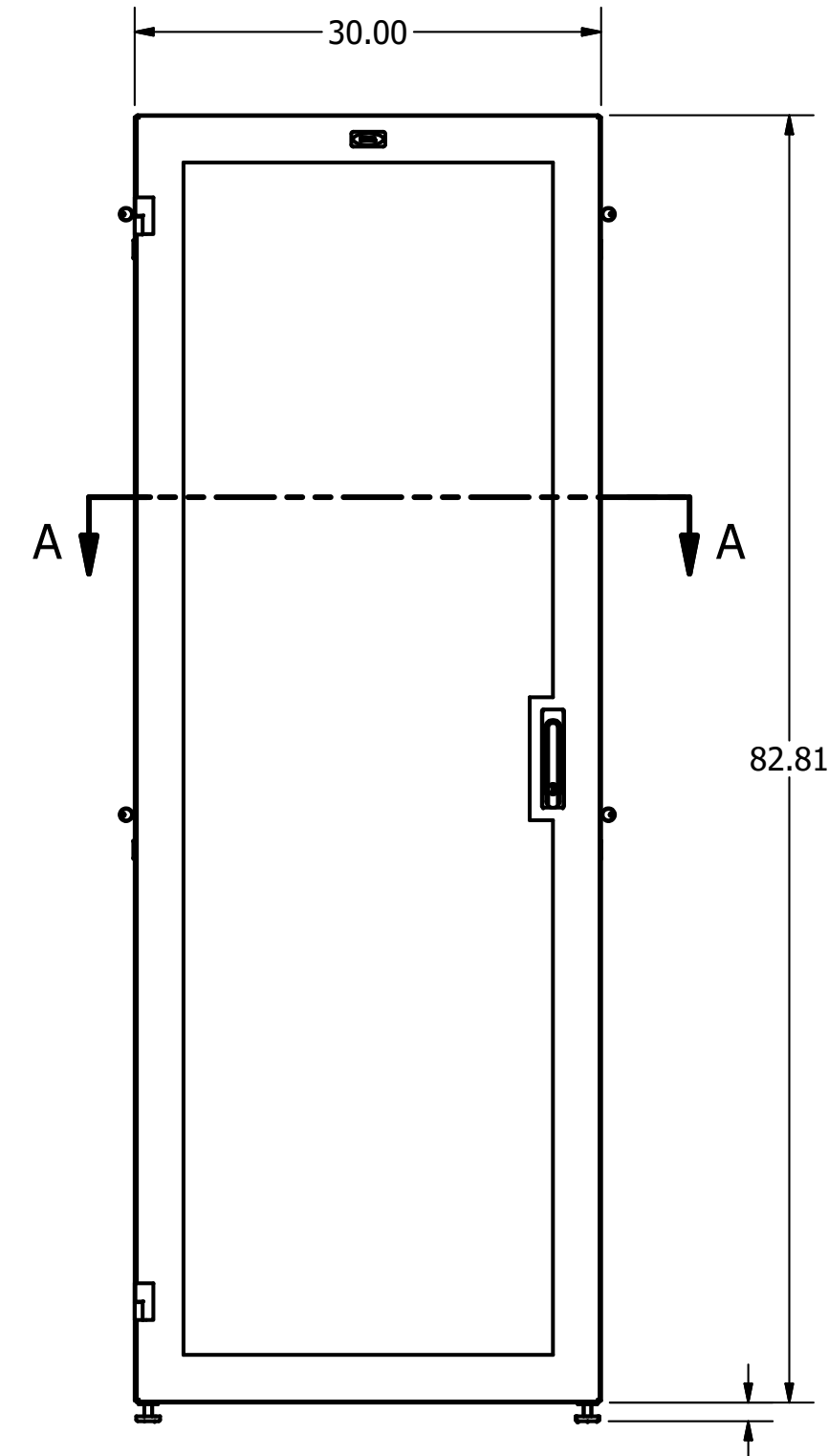
CATALOG NO.	DESCRIPTION	FRAME HEIGHT "A"	OVERALL DEPTH "B"	MOUNTING HEIGHT "C"	DIM. "D"	DIM. "E"	TOP PANEL "P"	SIDE COVER "R" [QTY]
H2N8432	NETWORK CABINET, 45U, 32" DEEP	82.81	31.97	78.81	N/A	25.85	N/A	4
H2N8436	NETWORK CABINET, 45U, 36" DEEP	82.81	35.97	78.81	3.47	29.85	4"W TOP PAN	4
H2N8032	NETWORK CABINET, 43U, 32" DEEP	79.31	31.97	75.31	N/A	25.85	N/A	4
H2N8036	NETWORK CABINET, 43U, 36" DEEP	79.31	35.97	75.31	3.47	29.85	4"W TOP PAN	4
H2N8432E	NETWORK CABINET, 45U, 32" DEEP, NO SIDES	82.81	31.97	78.81	N/A	25.85	N/A	N/A
H2N8436E	NETWORK CABINET, 45U, 36" DEEP, NO SIDES	82.81	35.97	78.81	3.47	29.85	4"W TOP PAN	N/A
H2N8032E	NETWORK CABINET, 43U, 32" DEEP, NO SIDES	79.31	31.97	75.31	N/A	25.85	N/A	N/A
H2N8036E	NETWORK CABINET, 43U, 36" DEEP, NO SIDES	79.31	35.97	75.31	3.47	29.85	4"W TOP PAN	N/A
H2N8442	NETWORK CABINET, 45U, 42" DEEP	82.81	41.97	78.81	9.47	35.85	10" TOP PAN	4
H2N8448	NETWORK CABINET, 45U, 48" DEEP	82.81	47.97	78.81	15.47	41.85	16" TOP PAN	4
H2N9042	NETWORK CABINET, 48U, 42" DEEP	88.06	41.97	84.06	9.47	35.85	10" TOP PAN	4
H2N9048	NETWORK CABINET, 48U, 48" DEEP	88.06	47.97	84.06	15.47	41.85	16" TOP PAN	4
H2N8442E	NETWORK CABINET, 45U, 42" DEEP, NO SIDES	82.81	41.97	78.81	10.47	35.85	10" TOP PAN	N/A
H2N8448E	NETWORK CABINET, 45U, 48" DEEP, NO SIDES	82.81	47.97	78.81	15.72	41.85	16" TOP PAN	N/A



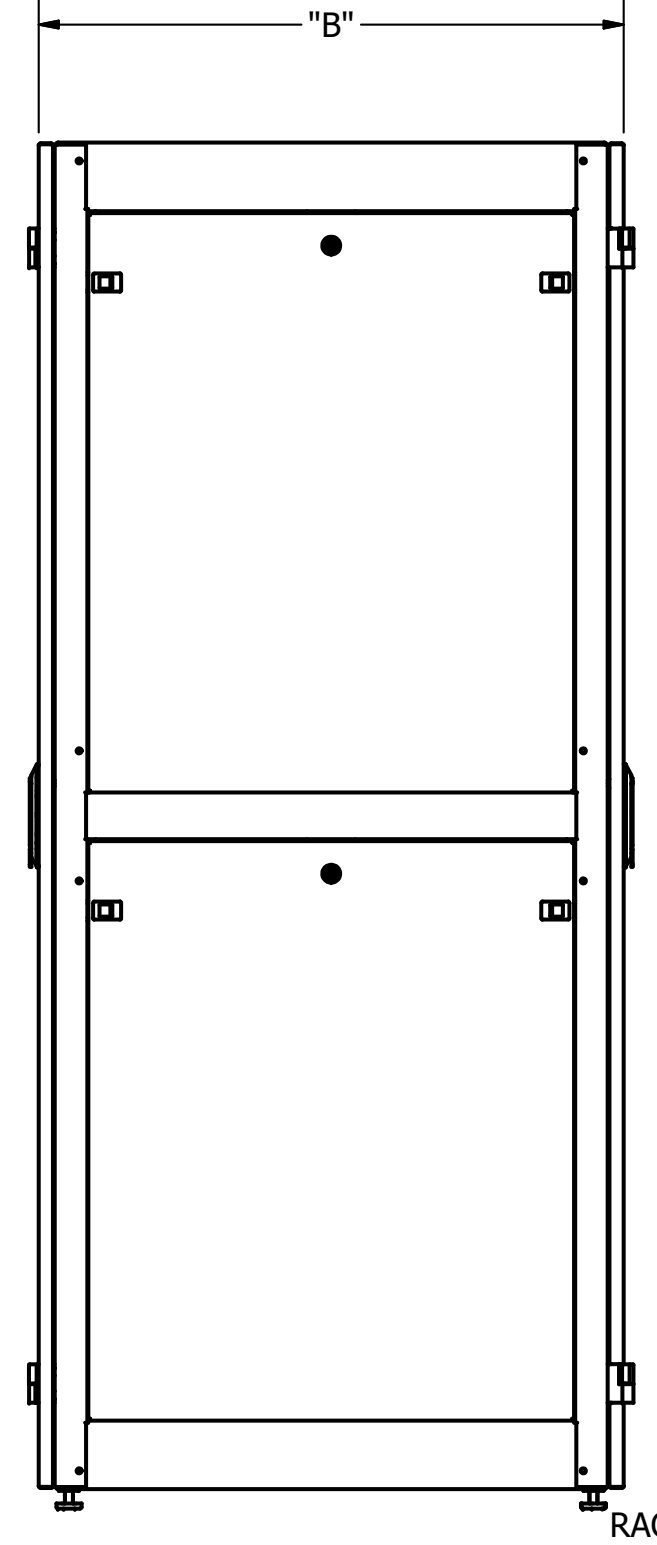
SECTION A-A
SCALE .08



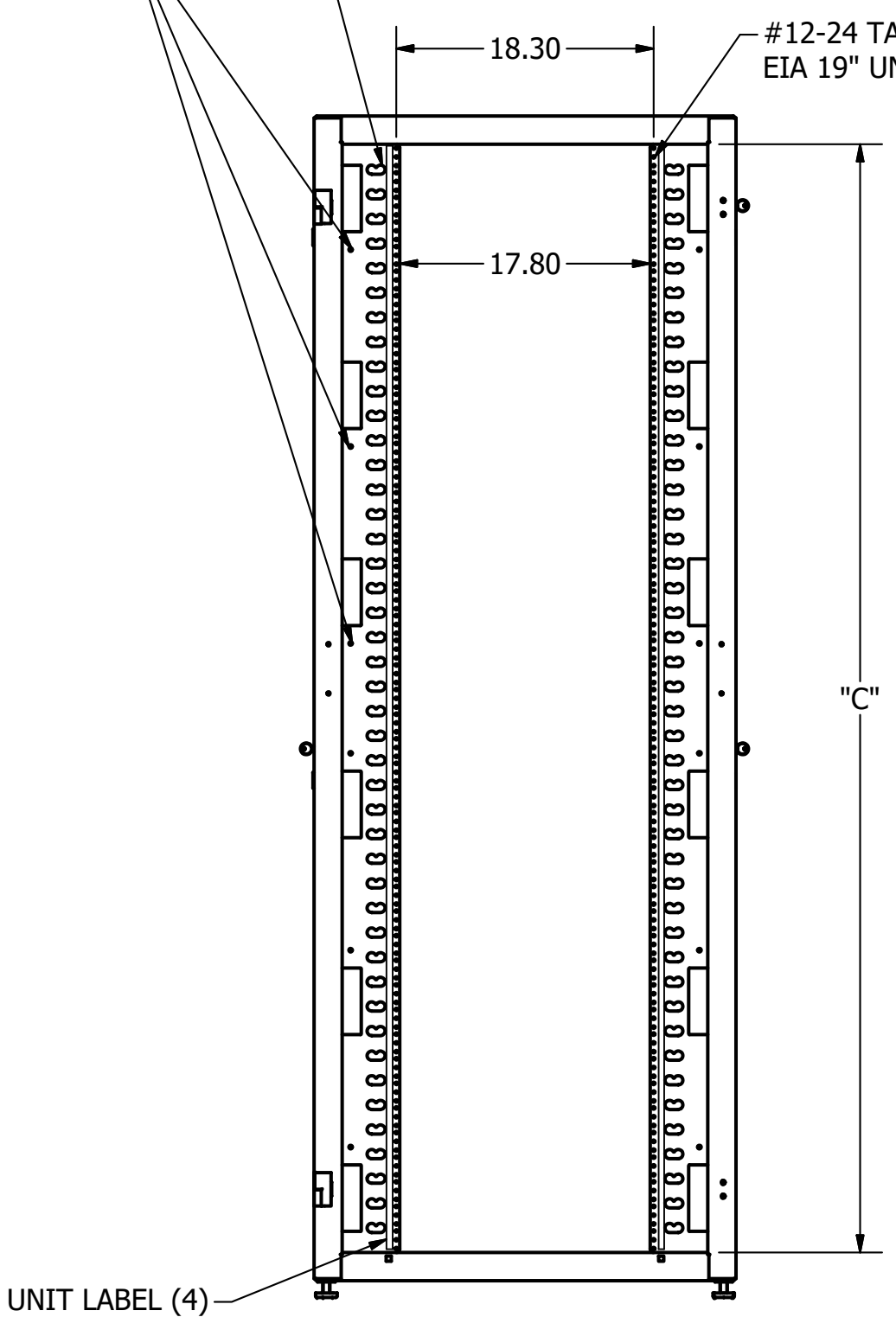
ACCEPTS CABLE MANAGEMENT SPOOLS, SOLD SEPARATELY (ICKS5x)



FRONT VIEW



SIDE VIEW

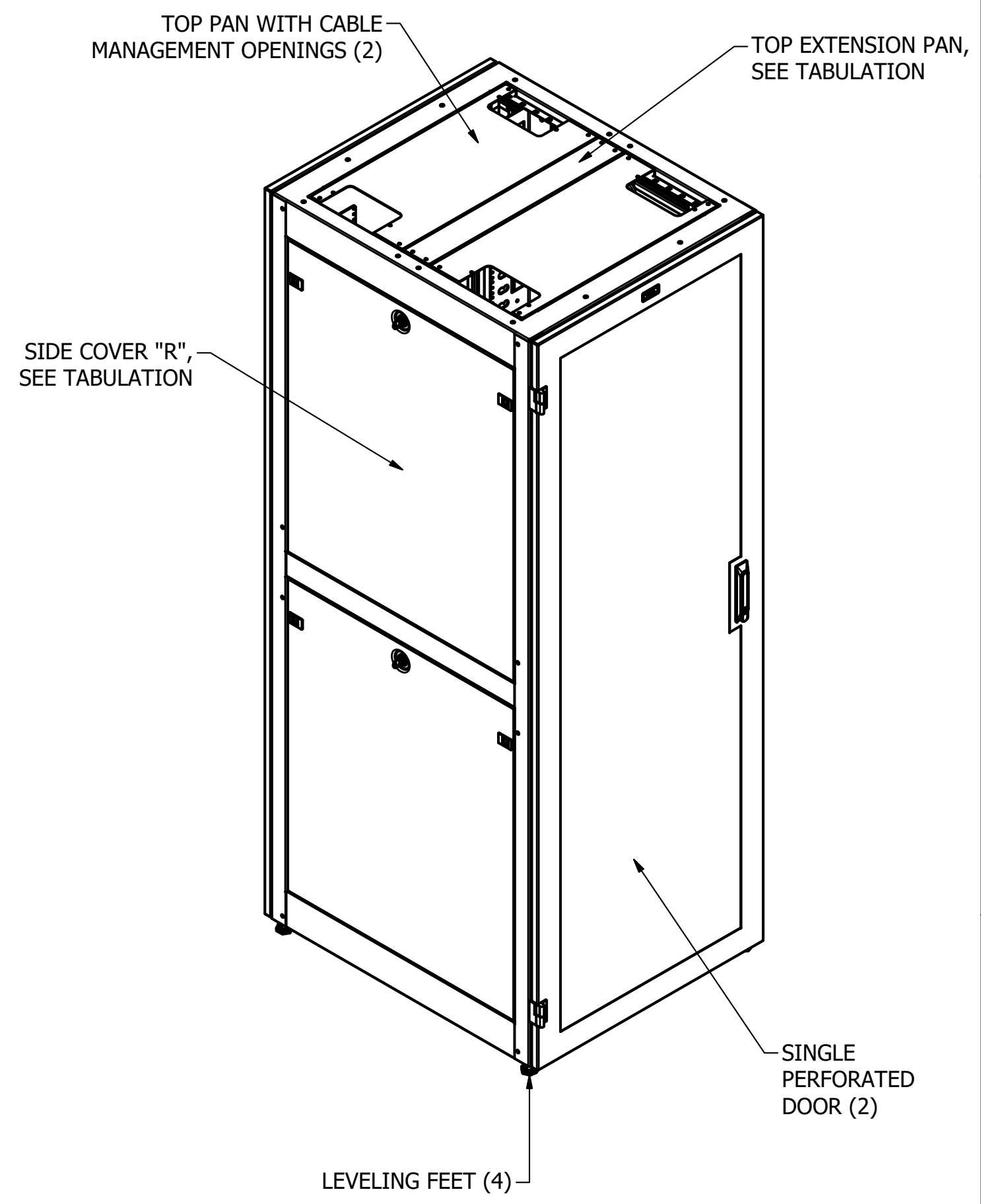


FRONT VIEW
(DOOR NOT SHOWN)

ACCEPTS VERTICAL BUSBAR, SOLD SEPARATELY (HBBVR36KT)

#12-24 TAPPED HOLES, EIA 19" UNIVERSAL SPACING

RACK UNIT LABEL (4)



NOTES:

1. SURFACE FINISH: BLACK POWDER COAT
2. HARDWARE PACK INCLUDES:
(20) #12-24 X 5/8 PAN HEAD COMBO SCREW
(20) #12 NYLON WASHER, BLACK
3. SPECIFICATIONS SUBJECT TO CHANGE WITHOUT NOTICE.

REV.	ECN	DATE	DESCRIPTION	CHG BY	APPD BY
G	19441	04/14/14	ADDED RACK UNIT LABEL CALLOUT	MMA	

Created on INVENTOR	DIMENSIONING AND TOLERANCE PER ANSI Y14.5M-1982 UNLESS OTHERWISE SPECIFIED, DIMENSIONS ARE IN INCHES (MM). TOLERANCES: .XX = ±.01 (.25) .XXX = ±.005 (.127) .XXXX = ±.0025 (.0635) ANGLE TOL ±1°		PROJECT REFERENCE: 2009-023			Hubbell Premise Wiring HUBBELL INCORPORATED (Delaware) 23 CLARA DRIVE, SUITE 103 MYSTIC, CT 06355		
	IN ACCEPTING OUR DRAWINGS, BLUEPRINTS, OR SUPPORTING DOCUMENTATION FOR QUOTATION OR OTHER PURPOSES, YOU AGREE NOT TO DISCLOSE TO OTHERS THE IDEAS, INFORMATION, OR DESIGNS SHOWN HEREIN, AND THAT YOU WILL MAKE NO USE OF SAME WITHOUT PERMISSION		MATERIAL: CRS			TITLE: NETWORK CABINET, H2 SERIES		
	DRAWN BY: MABBY 11/19/09		CHECKED BY:		SIZE: DRAWING NO. D HWS12827C		REV. G	
	APPROVED BY:		SCALE: N/A		SHEET 1 OF 1			