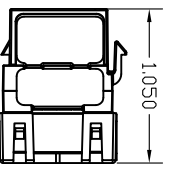
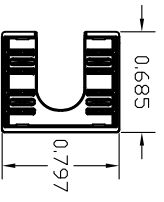
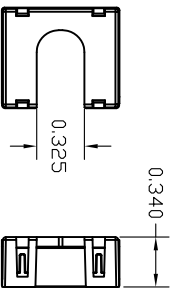
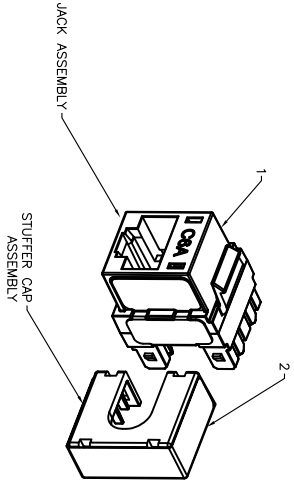
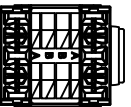
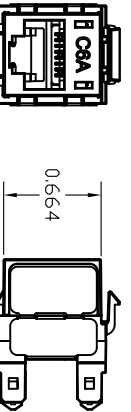
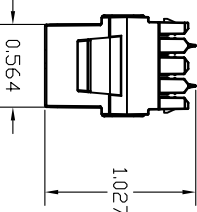


ITEM NO.	DESCRIPTION	QTY.
1	HUBA SERIES JACKS	1
2	STUFFER CAP	1



CATALOG	DESCRIPTION
HUBAOW	C6A JACK, OFFICE WHITE
HUBABK	C6A JACK, BLACK
HUBAGY	C6A JACK, GRAY
HUBAW	C6A JACK, WHITE
HUBAOR	C6A JACK, ORANGE
HUBAR	C6A JACK, RED
HUBAB	C6A JACK, BLUE
HUBAGN	C6A JACK, GREEN
HUBAEI	C6A JACK, ELECTRIC IVORY
HUBAY	C6A JACK, YELLOW
HUBAP	C6A JACK, PURPLE
HUBAGL	C6A JACK, GOLD
HUBAAL	C6A JACK, ALMOND
HUBALA	C6A JACK, LIGHT ALMOND
HUBABN	C6A JACK, BROWN
HUBAOW25	C6A JACK, 25 PACK OFFICE WHITE
HUBABK25	C6A JACK, 25 PACK BLACK
HUBAGY25	C6A JACK, 25 PACK GRAY
HUBAW25	C6A JACK, 25 PACK WHITE
HUBAOR25	C6A JACK, 25 PACK ORANGE
HUBAR25	C6A JACK, 25 PACK RED
HUBAB25	C6A JACK, 25 PACK BLUE
HUBAGN25	C6A JACK, 25 PACK GREEN
HUBAEI25	C6A JACK, 25 PACK ELECTRIC IVORY
HUBAY25	C6A JACK, 25 PACK YELLOW
HUBAP25	C6A JACK, 25 PACK PURPLE
HUBAGL25	C6A JACK, 25 PACK GOLD
HUBAAL25	C6A JACK, 25 PACK ALMOND
HUBALA25	C6A JACK, 25 PACK LIGHT ALMOND
HUBABN25	C6A JACK, 25 PACK BROWN

NOTES
UNLESS OTHERWISE SPECIFIED:

1. UL LISTED: E129878
2. CSA CERTIFIED: LR 80837
3. NOSE CONTACTS ARE BERYLLIUM COPPER WITH 50 MICRO INCH PRECIOUS METAL PLATING IN MATING AREA
4. IDC CONTACTS ARE TIN LEAD PLATED
5. ALL CONTACTS ARE UNDERPLATED IN NICKEL
6. SPECIFICATIONS SUBJECT TO CHANGE WITHOUT NOTICE

REV.	ECN	DATE	INITIAL RELEASE	DPO	APPD BY
A	6533	3/3/09			

Created on AUTOCAD

IN ACCEPTING OUR DRAWINGS, YOU AGREE TO HOLD US HARMLESS FROM AND TO DEFEND US AGAINST ALL CLAIMS, DAMAGES, LOSSES AND EXPENSES, INCLUDING REASONABLE ATTORNEY'S FEES, THAT MAY BE ASSERTED AGAINST US BY ANY THIRD PARTY AS A RESULT OF OUR NEGLIGENCE OR OTHERWISE.

ANSI Y14.5M-1982 (2003) DIMENSIONS ARE IN INCHES (IN), TOLERANCES ARE: .XX = ±.01 (25) .XXX = ±.005 (125) .XXXX = ±.0025 (625) ANGLE TO .1°

PROJECT REFERENCE: 2008-001

MATERIAL: C6A JACK

DRAWN BY: D.O'CONNOR 3/3/09

CHECKED BY:

APPROVED BY:

Hubbell Premise Wiring
HUBBELL INCORPORATED (Delaware)
14 Lovell Hill Road, Stamford, Connecticut 06378

C6A JACK
HUBA SERIES

SIZE: DRAWING NO. HWS12676C

SCALE: 2/1 SHEET 1 OF 1