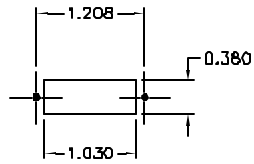
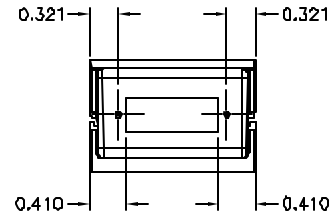
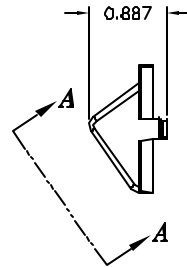
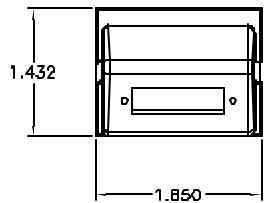
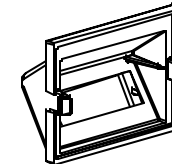
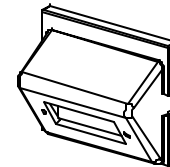
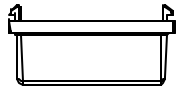


CATALOG NUMBER	COLOR	DESCRIPTION
IM1SCA15W	WHITE	MODULE, ANGLED 1.5U 1SC
IM1SCA15OW	OFFICE WHITE	MODULE, ANGLED 1.5U 1SC
IM1SCA15EI	ELECTRIC IVORY	MODULE, ANGLED 1.5U 1SC
IM1SCA15GY	GRAY	MODULE, ANGLED 1.5U 1SC
IM1SCA15BK	BLACK	MODULE, ANGLED 1.5U 1SC
IM1SCA15TI	TELCO IVORY	MODULE, ANGLED 1.5U 1SC



STANDARD SC DUPLEX  
OPENING




**VIEW "A-A"**

**NOTES**

UNLESS OTHERWISE SPECIFIED:

1. C-UL-US LISTED: E120878
2. SPECIFICATIONS SUBJECT TO CHANGE WITHOUT NOTICE

Created or AUTOCAD	DIMENSIONING AND TOLERANCE PER ANSI Y14.5M-1982 UNLESS OTHERWISE SPECIFIED, DIMENSIONS ARE IN INCHES (MM). TOLERANCES .XX = ±.01 (.25) .XXX = ±.005 (.127) XXXX = ±.0025 (.0635) ANGLE TEL. 25°		PROJECT REFERENCE:		 Hubbell Premise Wiring HUBBELL INCORPORATED (Delaware) 34 Lord's Hill Road, Stonington, Connecticut 06378	
	IN ACCEPTING OUR DRAWINGS, BLUEPRINTS, OR SUPPORTING DOCUMENTATION FOR QUOTATION OR OTHER PURPOSES, YOU AGREE NOT TO DISCLOSE TO OTHERS THE IDEAS, INFORMATION, OR DESIGNS SHOWN HEREIN, AND THAT YOU WILL MAKE NO USE OF SAME WITHOUT PERMISSION		MATERIAL:			TITLE
			DRAWN BY: P.S.MACQUIRE 02/23/2001		INFINE STATION MODULE ANGLED 1.5U 1SC	
			CHECKED BY: H. MCGREGOR 02/28/2001		SIZE	REV.
		APPROVED BY: H. MCGREGOR 02/28/2001		DRAWING NO. <b>C778790</b>		
				SCALE:	SHEET 1 OF 1	

REV.	ECN	DATE	DESCRIPTION	CHG BY	APPD BY
A	4148	02/23/01	INITIAL RELEASE	PSM	HKM