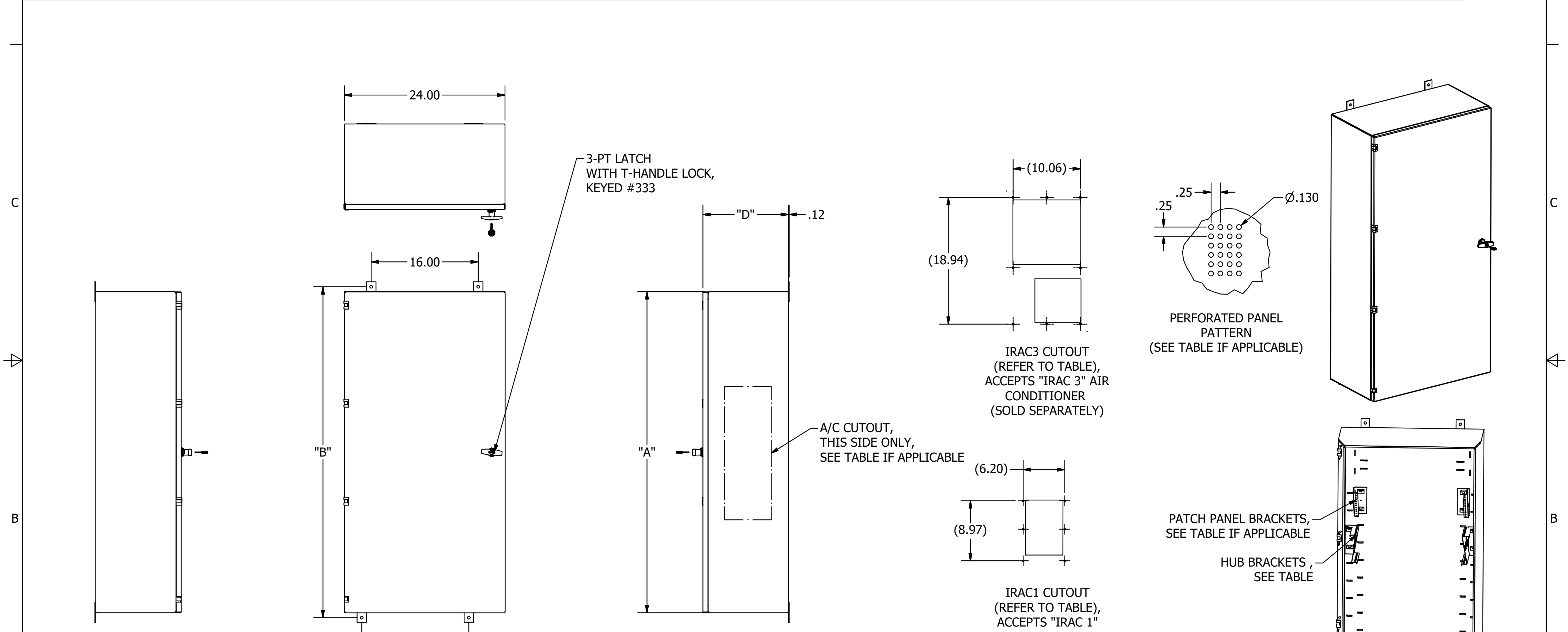


CATALOG NO.	DESCRIPTION	MATERIAL	SURFACE FINISH	HEIGHT "A"	MTG HEIGHT "B"	DEPTH "D"	A/C CUTOU	REAR PANEL	HUB MTG BRKT KIT	PATCH PNL BRKT KIT
IR221APG	IND REBOX,24H,24W,13D,AC1,PRECONFIGURED,GY	CRS	ANSI 61 GRAY POWDER COAT	24.00	25.50	12.79	IRAC 1	WITH LANCES	1	1
IR321APG	IND REBOX,36H,24W,13D,AC1,PRECONFIGURED,GY	CRS	ANSI 61 GRAY POWDER COAT	36.00	37.50	12.79	IRAC 1	WITH LANCES	1	1
IR421APG	IND REBOX,48H,24W,13D,AC1,PRECONFIGURED,GY	CRS	ANSI 61 GRAY POWDER COAT	48.00	49.50	12.79	IRAC 1	WITH LANCES	1	1
IR321APG	IND REBOX,36H,24W,16D,AC3,PRECONFIGURED,GY	CRS	ANSI 61 GRAY POWDER COAT	36.00	37.50	15.79	IRAC3	WITH LANCES	1	1
IR421APG	IND REBOX,48H,24W,16D,AC3,PRECONFIGURED,GY	CRS	ANSI 61 GRAY POWDER COAT	48.00	49.50	15.79	IRAC3	WITH LANCES	1	1
IR221UG	IND REBX,24H,24W,13D,PRECNFG,GY	CRS	ANSI 61 GRAY POWDER COAT	24.00	25.50	12.79	N/A	FULLY PERFORATED	N/A	N/A
IR321UG	IND REBX,36H,24W,13D,PRECNFG,GY	CRS	ANSI 61 GRAY POWDER COAT	36.00	37.50	12.79	N/A	FULLY PERFORATED	N/A	N/A
IR421UG	IND REBX,48H,24W,13D,PRECNFG,GY	CRS	ANSI 61 GRAY POWDER COAT	48.00	49.50	12.79	N/A	FULLY PERFORATED	N/A	N/A
IR221PG	IND REBX,24H,24W,13D,USR CNFG,GY	CRS	ANSI 61 GRAY POWDER COAT	24.00	25.50	12.79	N/A	WITH LANCES	1	1
IR321PG	IND REBX,36H,24W,13D,USR CNFG,GY	CRS	ANSI 61 GRAY POWDER COAT	36.00	37.50	12.79	N/A	WITH LANCES	1	1
IR421PG	IND REBX,48H,24W,13D,USR CNFG,GY	CRS	ANSI 61 GRAY POWDER COAT	48.00	49.50	12.79	N/A	WITH LANCES	1	1
IR221PS	IND REBX,24H,24W,13D,PRECNFG,SS	STAINLESS STEEL	NONE	24.00	25.50	12.79	N/A	WITH LANCES	1	1
IR321PS	IND REBX,36H,24W,13D,PRECNFG,SS	STAINLESS STEEL	NONE	36.00	37.50	12.79	N/A	WITH LANCES	1	1
IR421PS	IND REBX,48H,24W,13D,PRECNFG,SS	STAINLESS STEEL	NONE	48.00	49.50	12.79	N/A	WITH LANCES	1	1



- NOTES:
1. SURFACE FINISH: SEE TABLE
  2. SHIPPED UNASSEMBLED INSIDE THE CABINET:
    - HUB MOUNTING BRACKETS
    - PATCH PANEL BRACKETS
  3. SPECIFICATIONS SUBJECT OT CHANGE WITHOUT NOTICE.

2	22520	10/23/17	ADDED -04 THRU -14	MMA	DO	DIMENSIONING AND TOLERANCE PER ANSI Y14.5M-1982 UNLESS OTHERWISE SPECIFIED, DIMENSIONS ARE IN INCHES (MM). TOLERANCES: XX = ±.01 (.25) .XXX = ±.005 (.127) .XXXX = ±.0025 (.0635) ANGLE TOL ±1°	PROJECT REFERENCE: 061-15	<b>Hubbell Premise Wiring</b> HUBBELL INCORPORATED (Delaware) 23 CLARA DRIVE, SUITE 103 MYSTIC, CT 06355		
	1	21405	08/18/16	INITIAL RELEASE	JJRJ		MMA		MATERIAL: SEE NOTES	
	REV.	ECN	DATE	DESCRIPTION	CHG BY		APPD BY		DRAWN BY: JRJUTJACKSON 8/18/2016	TITLE: INDUSTRIAL REBOX
									CHECKED BY:	SIZE: C DRAWING NO.: HWS14555C
						APPROVED BY:	SCALE:	REV. 2		
						SHEET 1 OF 1				