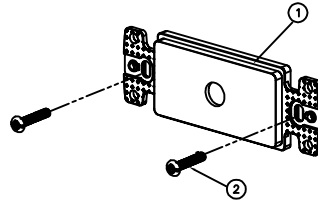
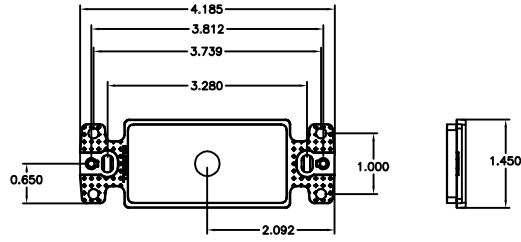


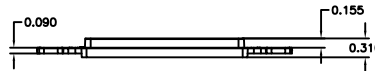
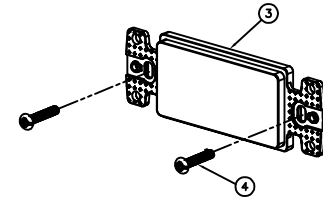
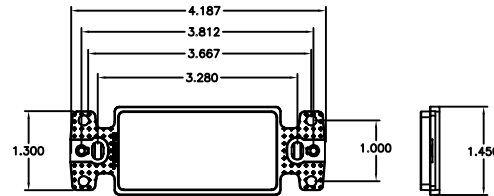
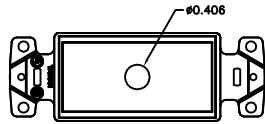
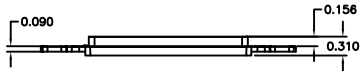
CATALOG NUMBER	COLOR	DESCRIPTION
NS6211	IVORY	FRAME WITH .406 HOLE
NS621W	WHITE	FRAME WITH .406 HOLE
NS621AL	ALMOND	FRAME WITH .406 HOLE
NS620I	IVORY	BLANK FRAME
NS620W	WHITE	BLANK FRAME
NS620AL	ALMOND	BLANK FRAME
NS620LA	LIGHT ALMOND	BLANK FRAME
NS621LA	LIGHT ALMOND	FRAME WITH .406 HOLE

ITEM NO.	DESCRIPTION	QTY.
1	.406 HOLE, FRAME	1
2	6-32 X 7/8" TRI-DRIVE SCREW	2
3	BLANK, FRAME	1
4	6-32 X 7/8" TRI-DRIVE SCREW	2




NOTES
UNLESS OTHERWISE SPECIFIED:

1. UL LISTED: E129878
2. CSA CERTIFIED: LR 80837
3. SPECIFICATIONS SUBJECT TO CHANGE WITHOUT NOTICE



REV.	ECN	DATE	DESCRIPTION	CHG BY	APPD BY
B	5914	08/14/06	ADDED LIGHT ALMOND NS620LA & NS621LA	NJR	
A	5813	03/10/06	INITIAL RELEASE	NJR	NH

CHECKED BY: AUTOCAD	DIMENSIONING AND TOLERANCE PER ANSI Y14.2M-1982 UNLESS OTHERWISE SPECIFIED, DIMENSIONS ARE IN INCHES (MM), TOLERANCES .XX = ±0.01 (25) .XXX = ±0.005 (127) .XXXX = ±0.0025 (635) ANGLE TOL. ±1°		PROJECT REFERENCE: MATERIAL:	 Hubbell Premise Wiring HUBBELL INCORPORATED (Delaware) 14 Lord's Hill Road, Stonington, Connecticut 06378
	IN ACCEPTING OUR DIMENSIONS, BLUEPRINTS, OR SUPPORTING DOCUMENTATION FOR QUOTATION OR OTHER PURPOSES, YOU AGREE NOT TO DISCLOSE TO OTHERS THE IDEAS, INFORMATION, OR DESIGN SHOWN HEREIN, AND THAT YOU WILL MAKE NO USE OF SAME WITHOUT PERMISSION		DRAWN BY: NANCY RICHARDS 03/10/06 CHECKED BY:	
APPROVED BY:			SIZE: D DRAWING NO.: CHWS12265	REV. B SCALE: 1/1 SHEET 1 OF 1