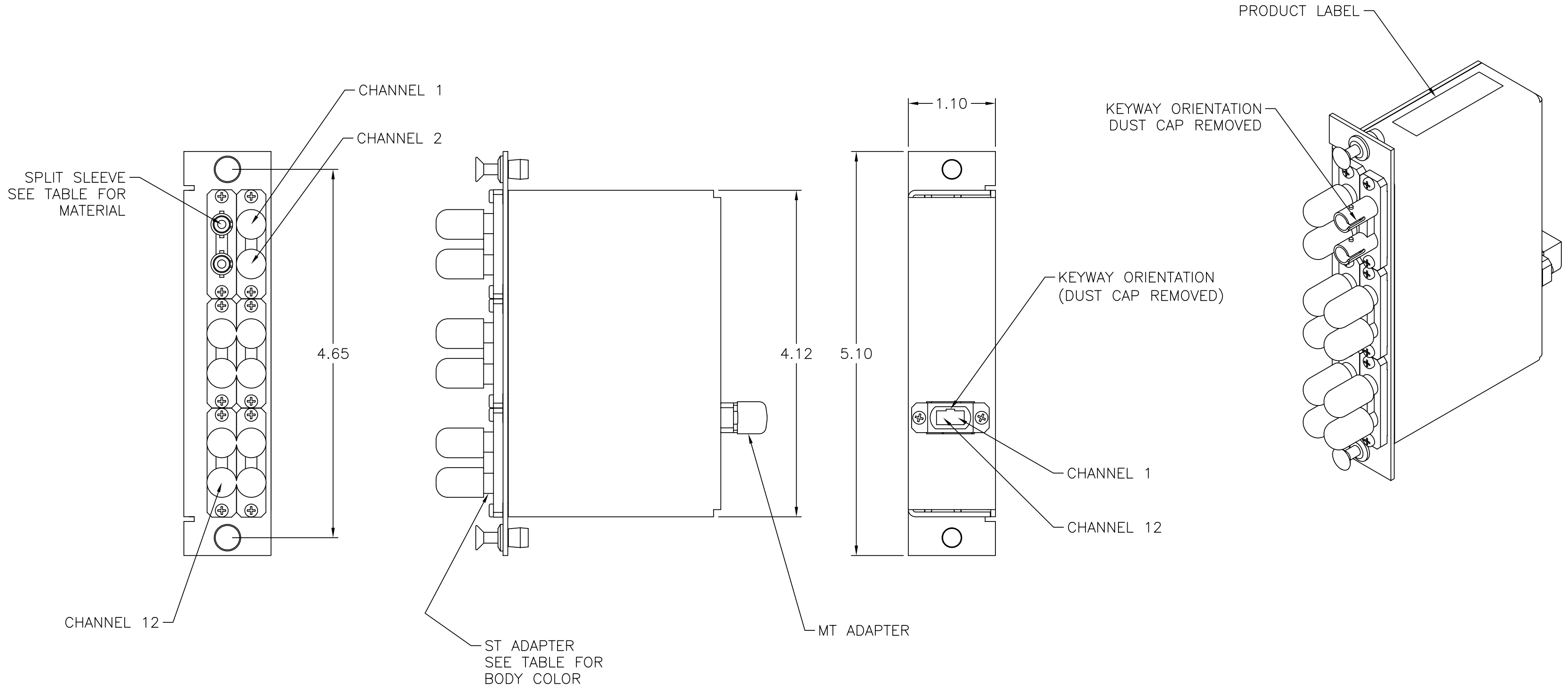



6 5 4 3 2 1

CATALOG NUMBER	DESCRIPTION	FIBER TYPE	SPLIT SLEEVE MAT'L	ADAPT. BODY COLOR
OCST50	OPTICAL CASSETTE ST DUPLEX/MTP	MULTIMODE 50/125	PHOSPHOR BRONZE	BLACK
OCST62	OPTICAL CASSETTE ST DUPLEX/MTP	MULTIMODE 62/125	PHOSPHOR BRONZE	BEIGE
OCSTSM	OPTICAL CASSETTE ST DUPLEX/MTP	SINGLEMODE 9/125	ZIRCONIA	BLUE



- NOTES
UNLESS OTHERWISE SPECIFIED:
- SUPPLIED WITH PUSH/PULL FASTENERS FOR EASY INSTALLATION/REMOVAL.
 - PANELS FIT INTO HUBBELL WALL MOUNT AND RACK MOUNT CABINETS.
 - BLACK ELECTROSTATICALLY APPLIED POWDER COAT.
 - ADAPTERS SUPPLIED WITH DUST CAPS INSTALLED.
 - FULLY TESTED WITH TEST DATA INCLUDED.
 - SPECIFICATIONS SUBJECT TO CHANGE WITHOUT NOTICE.

Created on AUTOCAD	DIMENSIONING AND TOLERANCE PER ANSI Y14.5M-1982 UNLESS OTHERWISE SPECIFIED, DIMENSIONS ARE IN INCHES (MM). TOLERANCES .X = ±.03 (.8) .XX = ±.02 (.4) .XXX = ±.010 (.25) ANGLE TOL ±1°		PROJECT REFERENCE:		 Hubbell Premise Wiring HUBBELL INCORPORATED (Delaware) 14 Lord's Hill Road, Stonington, Connecticut 06378		
	IN ACCEPTING OUR DRAWINGS, BLUEPRINTS, OR SUPPORTING DOCUMENTATION FOR QUOTATION OR OTHER PURPOSES, YOU AGREE NOT TO DISCLOSE TO OTHERS THE IDEAS, INFORMATION, OR DESIGNS SHOWN HEREIN, AND THAT YOU WILL MAKE NO USE OF SAME WITHOUT PERMISSION		MATERIAL: .060 C.R.S. ENGINEERING THERMOPLASTIC			TITLE: FIBER OPTICAL CASSETTE ST DUPLEX/MTP	
			DRAWN BY: PAUL S. MAGUIRE 01/09/03		SIZE: C	DRAWING NO.: C11883	REV.: B
			CHECKED BY: JON LUTZEN 01/15/03		SCALE: 1/1 SHEET 1 OF 1		
		APPROVED BY: JON LUTZEN 01/15/03					

REV.	ECN	DATE	DESCRIPTION	CHG BY	APPD BY
B	5984	11/28/06	CHNGD KEYWAY ORIENTATION & 50um COLOR	CD	