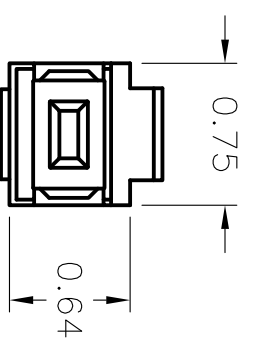
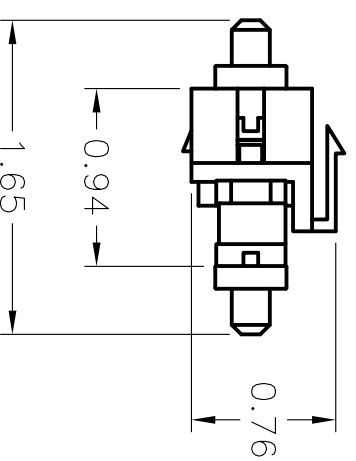
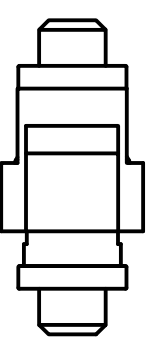
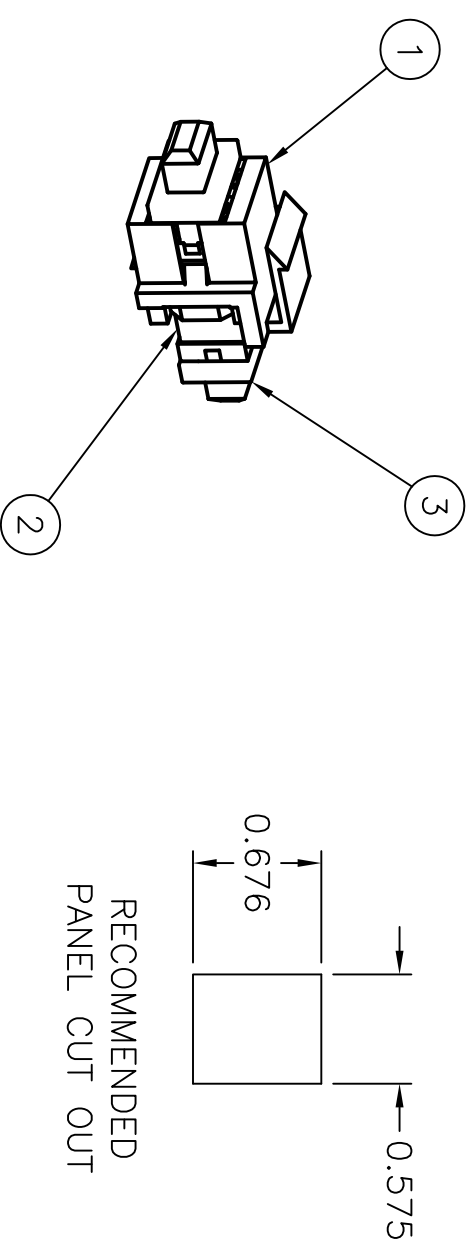


ITEM NO.	DESCRIPTION	QTY.
1	FLUSH MOUNT SNAP FIT FIBER ADAPTER	1
2	MPO ADAPTER	1
3	DUST CAPS	2

CATALOG NUMBER	HOUSING COLOR	ADAPTER COLOR
SFMTPAQXX	SEE NOTE #3	AQUA
SFMTPBEXX	SEE NOTE #3	BEIGE
SFMTPBKXX	SEE NOTE #3	BLACK
SFMTPGNXX	SEE NOTE #3	GREEN



- NOTES:
- SUPPLIED ASSEMBLED WITH DUST CAPS INSTALLED, INDIVIDUALLY BAGGED.
 - SPECIFICATIONS SUBJECT TO CHANGE WITHOUT PRIOR NOTICE.
 - 'XX' DENOTES THE SNAP FIT ADAPTER COLOR. REPLACE 'XX' WITH ONE OF THE FOLLOWING ABBREVIATIONS FOR ORDERING PURPOSES.
AL - ALMOND
BK - BLACK
G - GRAY
EI - ELECTRICAL IVORY
LA - LIGHT ALMOND
OW - OFFICE WHITE
W - WHITE

REV.	ECN	DATE	DESCRIPTION	CHG BY	APPD BY
1	17872	3/1/12	INITIAL RELEASE	CG	

Created on AUTOCAD

DIMENSIONING AND TOLERANCE PER ANSI Y14.5M-1982 UNLESS OTHERWISE SPECIFIED, DIMENSIONS ARE IN INCHES (MM).
TOLERANCES
.XX = ±.01 (.25)
.XXX = ±.005 (.127)
.XXXX = ±.0025 (.0635)
ANGLE TOL ±1°

IN ACCEPTING OUR DRAWINGS, BLUEPRINTS, OR SUPPORTING DOCUMENTATION FOR QUOTATION OR OTHER PURPOSES, YOU AGREE NOT TO DISCLOSE TO OTHERS THE IDEAS, INFORMATION, OR DESIGNS SHOWN HEREIN, AND THAT YOU WILL MAKE NO USE OF SAME WITHOUT PERMISSION

PROJECT REFERENCE:

MATERIAL:
SF: ENGINEERING THERMOPLASTIC
MPO: ENGINEERING THERMOPLASTIC
RETAINING CLIP: STAINLESS STEEL

DRAWN BY:
C. GRIBBLE 3/1/12

CHECKED BY:

APPROVED BY:

TITLE:
HUBBELL
Hubbell Premise Wiring
HUBBELL INCORPORATED (Delaware)
14 Lord's Hill Road, Stonington, Connecticut 06378

FIBER OPTIC SNAP FIT ADAPTERS
MPO, 12 FIBER

SIZE: C
DRAWING NO.: HWS13028C
SCALE: 1/1
SHEET 1 OF 1

REV. 1