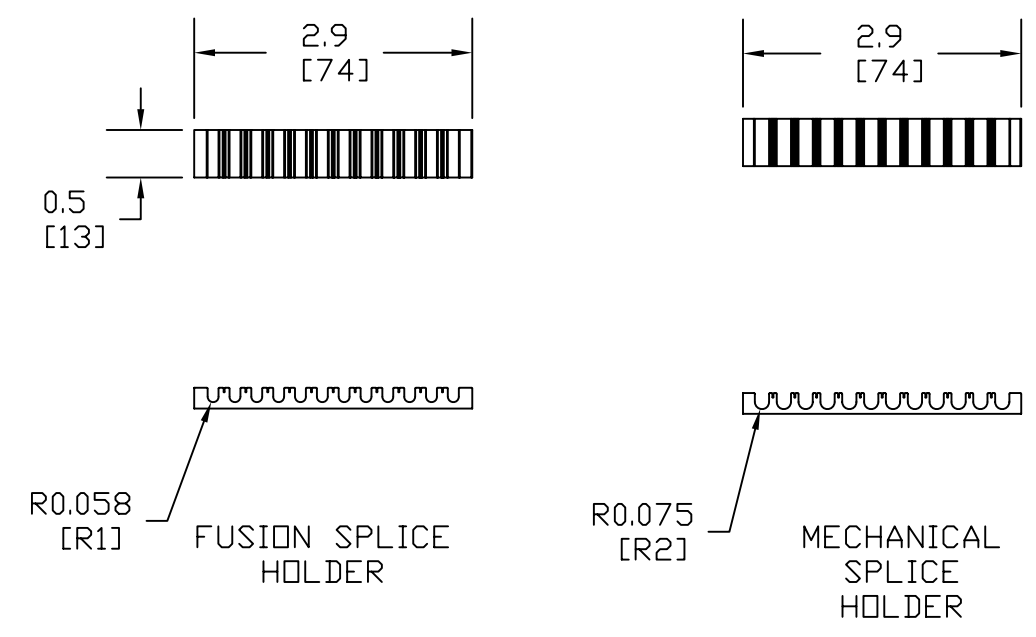
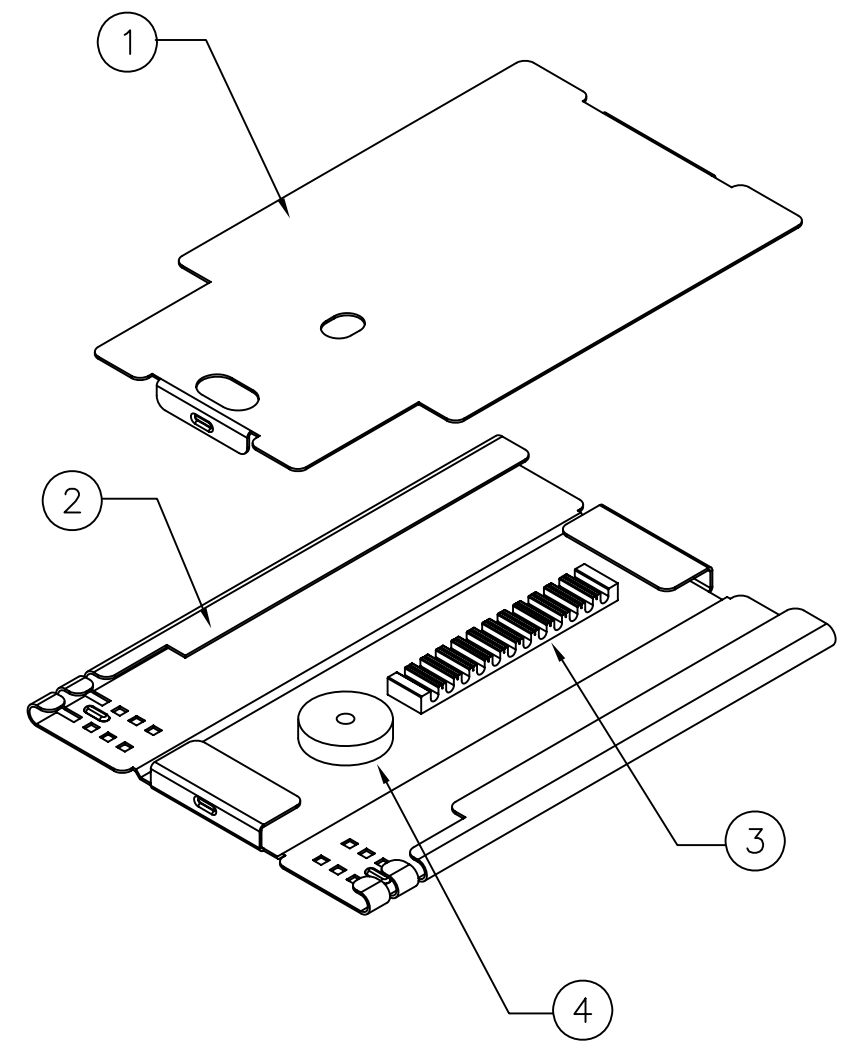
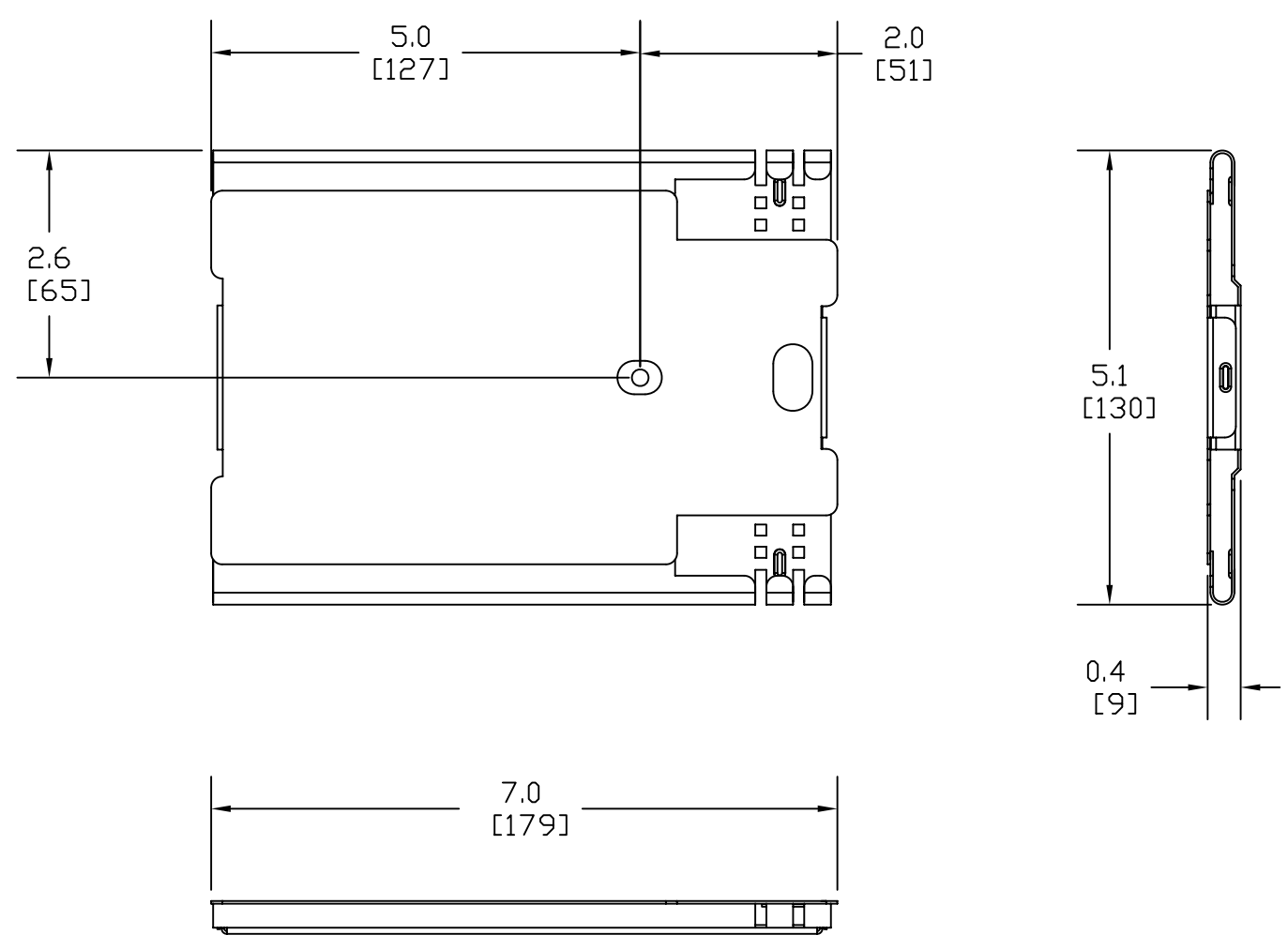



ITEM NO.	DESCRIPTION	QTY.
1	COVER	1
2	BASE	1
3	SPLICE HOLDER	1
4	FOAM WASHER	1
5	4" TIE WRAPS (NOT SHOWN)	8

CATALOG NUMBER	DESCRIPTION
STRAY12M	12 FIBER MECHANICAL SPLICE TRAY
STRAY12F	12 FIBER FUSION SPLICE TRAY



- NOTES:
1. TRAY MATERIAL IS .060" THICK ALUMINUM WITH CLEAR ANODIZE COATING.
 2. TRAY INCLUDES WITHER MECHANICAL SPLICE HOLDER OR FUSION SPLICE HOLDER PRE-MOUNTED INSIDIE TRAY.
 3. SPLICE HOLDER COMPATIBLE WITH MOST SPLICE SLEEVES.
 4. SPECIFICATIONS SUBJECT TO CHANGE WITHOUT NOTICE.

Created on AUTOCAD	DIMENSIONING AND TOLERANCE PER ANSI Y14.5M-1982 UNLESS OTHERWISE SPECIFIED, DIMENSIONS ARE IN INCHES (MM). TOLERANCES .XX = ±.01 (.25) .XXX = ±.005 (.127) .XXXX = ±.0025 (.0635) ANGLE TOL ±1°		PROJECT REFERENCE: N/A		 Hubbell Premise Wiring HUBBELL INCORPORATED (Delaware) 14 Lord's Hill Road, Stonington, Connecticut 06378
	IN ACCEPTING OUR DRAWINGS, BLUEPRINTS, OR SUPPORTING DOCUMENTATION FOR QUOTATION OR OTHER PURPOSES, YOU AGREE NOT TO DISCLOSE TO OTHERS THE IDEAS, INFORMATION, OR DESIGNS SHOWN HEREIN, AND THAT YOU WILL MAKE NO USE OF SAME WITHOUT PERMISSION		MATERIAL:		
			DRAWN BY: C. DUSSAULT 10/14/08		TITLE: FIBER SPLICE TRAY, 7" MECHANICAL/FUSION
			CHECKED BY:		SIZE: C DRAWING NO. C10931 REV. A
		APPROVED BY:		SCALE: 1/2 SHEET 1 OF 1	

REV.	ECN	DATE	DESCRIPTION	CHG BY	APPD BY
A	6464	10/14/08	INITIAL RELEASE	CD	