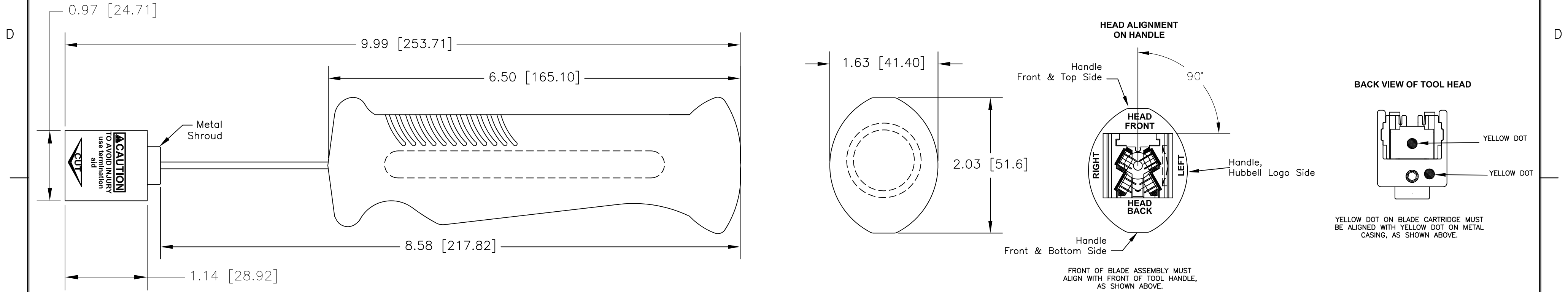
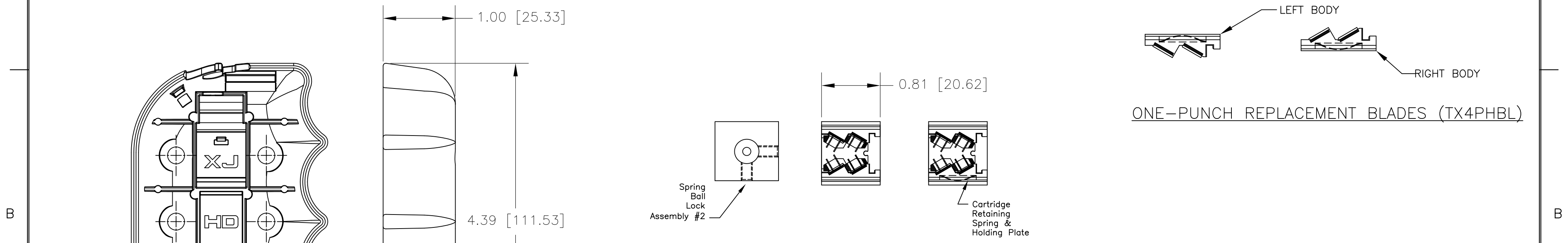


| CATALOG NUMBER | DESCRIPTION                    |
|----------------|--------------------------------|
| TX4P           | XCELERATOR ONE-PUNCH TERM TOOL |
| TX4PH          | ONE-PUNCH TOOL HEAD ASSY       |
| TX4PHBL        | ONE-PUNCH REPLACEMENT BLADES   |

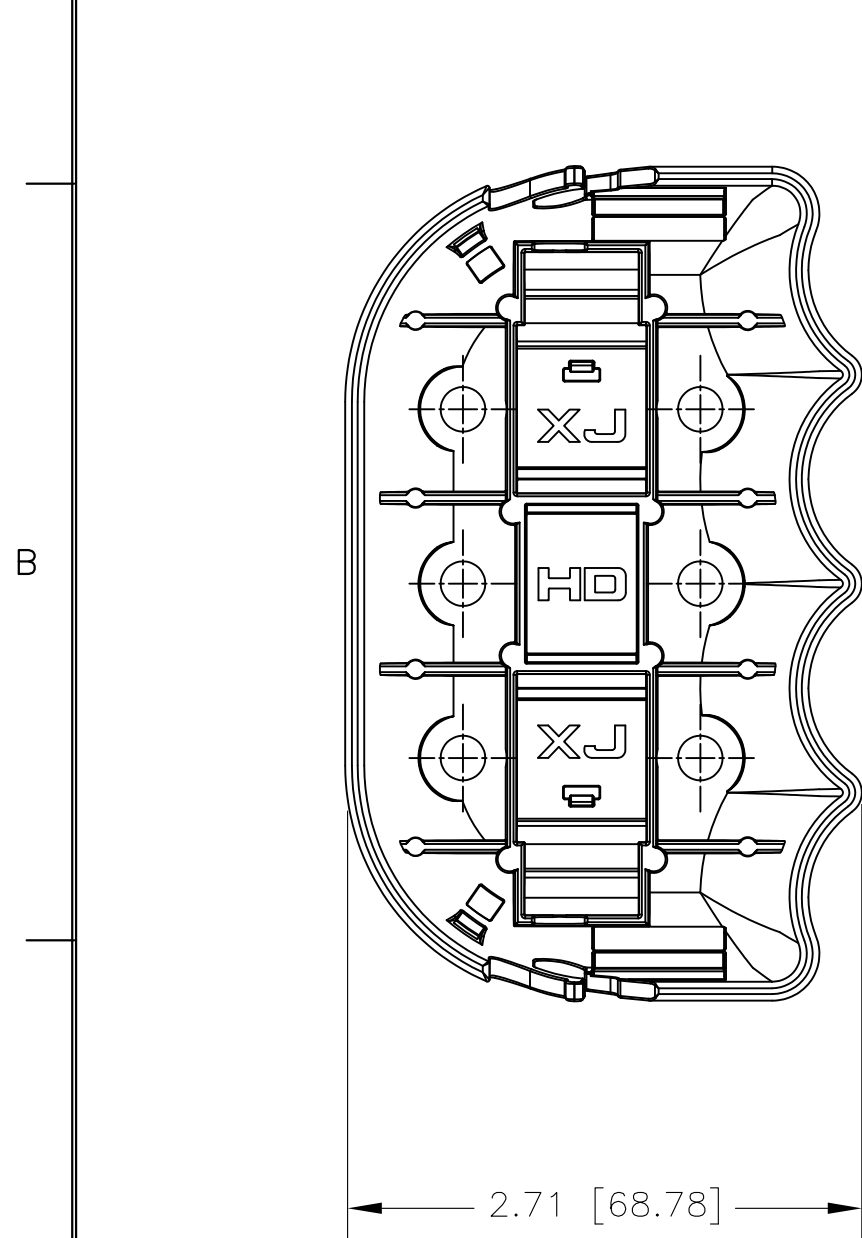


ASSEMBLED ONE-PUNCH TERMINATION TOOL (TX4P)

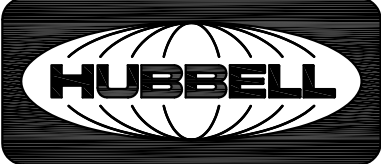


ONE-PUNCH TOOL HEAD ASSEMBLY (TX4PH)

- NOTES:
- TX4P KIT INCLUDES:  
ONE ASSEMBLED TERMINATION TOOL  
ONE JACK KNUCKLES TERMINATION AID  
ONE INSTRUCTION SHEET
  - TX4PH INCLUDES:  
ONE ONE-PUNCH TOOL HEAD ASSY
  - TX4PHBL INCLUDES:  
4 PAIRS OF ONE-PUNCH REPLACEMENT BLADES
  - TOOL HANDLE CYCLE FORCE IS 40LB ±5.
  - SPECIFICATIONS SUBJECT TO CHANGE WITHOUT NOTICE.



JACK KNUCKLES TERMINATION AID (HXTA)

|                    |   |              |  |                            |  |
|--------------------|---|--------------|--|----------------------------|--|
| Created on AUTOCAD | DIMENSIONING AND TOLERANCE PER ANSI Y14.5M-1982 UNLESS OTHERWISE SPECIFIED, DIMENSIONS ARE IN INCHES (MM).<br>TOLERANCES<br>.XX = ±.01 (.25)<br>.XXX = ±.005 (.127)<br>.XXXX = ±.0025 (.0635)<br>ANGLE TOL ±1°                                    |              | PROJECT REFERENCE:                                   |                            |  <b>Hubbell Premise Wiring</b><br>HUBBELL INCORPORATED (Delaware)<br>14 Lord's Hill Road, Stonington, Connecticut 06378 |
|                    | IN ACCEPTING OUR DRAWINGS, BLUEPRINTS, OR SUPPORTING DOCUMENTATION FOR QUOTATION OR OTHER PURPOSES, YOU AGREE NOT TO DISCLOSE TO OTHERS THE IDEAS, INFORMATION, OR DESIGNS SHOWN HEREIN, AND THAT YOU WILL MAKE NO USE OF SAME WITHOUT PERMISSION |              | MATERIAL:  |                            |  |
|                    |   |              | DRAWN BY:<br>J. Ruot-Jackson 7/14/16 / Chris Gribble |                            | TITLE:<br><b>4R XCELERATOR PUNCH DOWN TOOL</b>   |
|                    |   |              | CHECKED BY:  |                            | SIZE: <b>C</b> DRAWING NO.: <b>11789C</b> REV.: <b>1</b>   |
|                    |   | APPROVED BY: |  | SCALE: 1/1    SHEET 1 OF 1 |  |

| REV. | ECN   | DATE     | DESCRIPTION     | CHG BY | APPD BY |
|------|-------|----------|-----------------|--------|---------|
| 1    | 21405 | 07/15/16 | INITIAL RELEASE | JRJ    | DO      |