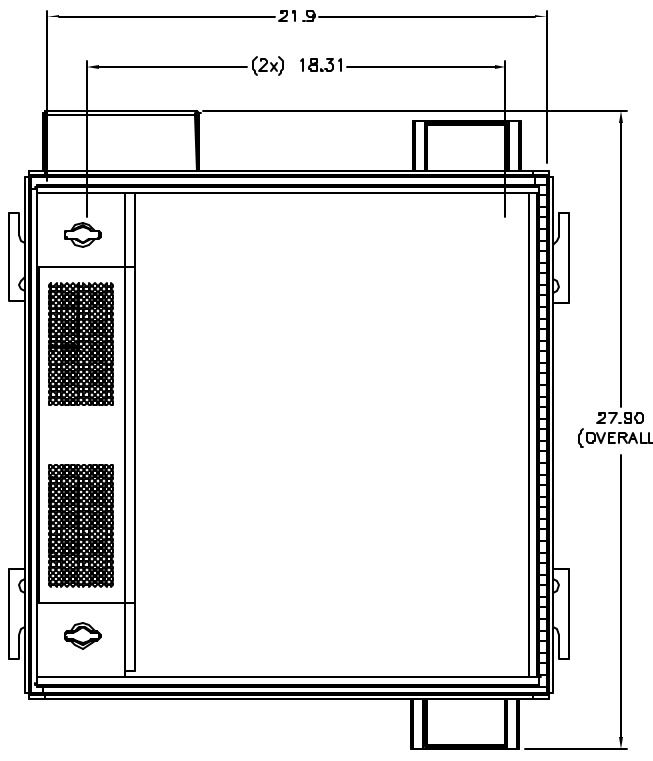
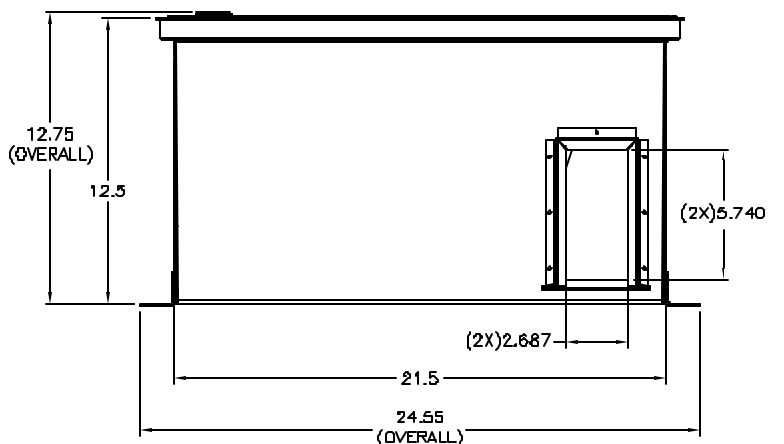


ITEM NO.	DESCRIPTION	ZCZYUA QTY.	ZCB5UP QTY.
<b>BOX ENCLOSURE ASSEMBLY</b>			
1	CEILING MOUNTING BRACKET	4	4
2	CABLE PENETRATION BRACKET	2	2
3	CABLE TIE	2	2
4	CORNER BRACKET	2	2
5	BRACKET FOR DOOR SLIDE HINGE	2	2
6	#8-32 ST ST PEM STANDOFF	2	2
7	#6-32 x 1/4" PHILIPS HEAD SCREW	2	2
8	#10 NYLON FLAT WASHER 1/16"	2	2
9	1/4 x 1/2 RUBBER GASKET	*	*
10	RTV CAULK, BOTTOM CORNER SEALANT-FIRE RATED	*	*
11	GROMMET STRIP	*	*
<b>DOOR ASSEMBLY</b>			
12	DOOR FRAME	1	1
13	HOLE PERFORATION FILTER HOUSING	1	1
14	EQUIPMENT MOUNTING PLATE	1	1
15	#10-32 THREADED STUD	4	4
16	#10-32 LOCK NUT	4	4
17	DOOR LOCK HOUSING - WHITE PLASTIC KNOB (EMKA)	2	2
18	DOOR SLIDE ARM BRACKET 1 - LEFT/RIGHT	2	2
19	DOOR SLIDE ARM BRACKET 2 - LEFT/RIGHT	2	2
20	HINGE MOUNT SLIDE ARM BRACKET - LEFT/RIGHT	2	2
21	DOOR HINGE TOP	1	1
22	DOOR HINGE BOTTOM	1	1
23	RIVET	4	4
<b>EQUIPMENT RACK SUB-ASSEMBLY</b>			
24	EQUIPMENT RACK	1	1
25	FRONT BRACKET W/MITERED CORNERS - RACK CAPACITY 2U	2	2
26	SHORT ANGLE BRACKET - RACK CAPACITY 1U	2	2
27	LONG ANGLE BRACKET - RACK CAPACITY 2U	2	2
28	#12-24 x 3/8" SCREW	8	8
29	#12-24 SELF-CLINCHING PEM NUT	28	28
30	NYLON 1/4" SNAP RIVET	2	2
31	POP RIVET	2	2
32	#10 NYLON FLAT WASHER 1/32"	2	2
<b>EQUIPMENT MOUNTING BRACKET EXTENSION</b>			
33	EQUIPMENT MOUNTING BRACKET EXTENSION - RACK CAPACITY 2U	2	N/A
34	#12-24 SELF-CLINCHING PEM NUT	16	N/A
35	#12-24 x 3/8" SCREW	8	N/A
<b>EQUIPMENT</b>			
36	FAN HOUSING ENCLOSURE	1	N/A
37	FAN	1	N/A
38	ELECTRICAL HOUSING ENCLOSURE	1	N/A
39	#10-32 LOCK NUT	4	N/A
40	#10-32 THREADED STUD	4	N/A
41	AC ADAPTER (INPUT) AC120v 60Hz 11w (OUTPUT) DC12v 300 Ma	1	N/A

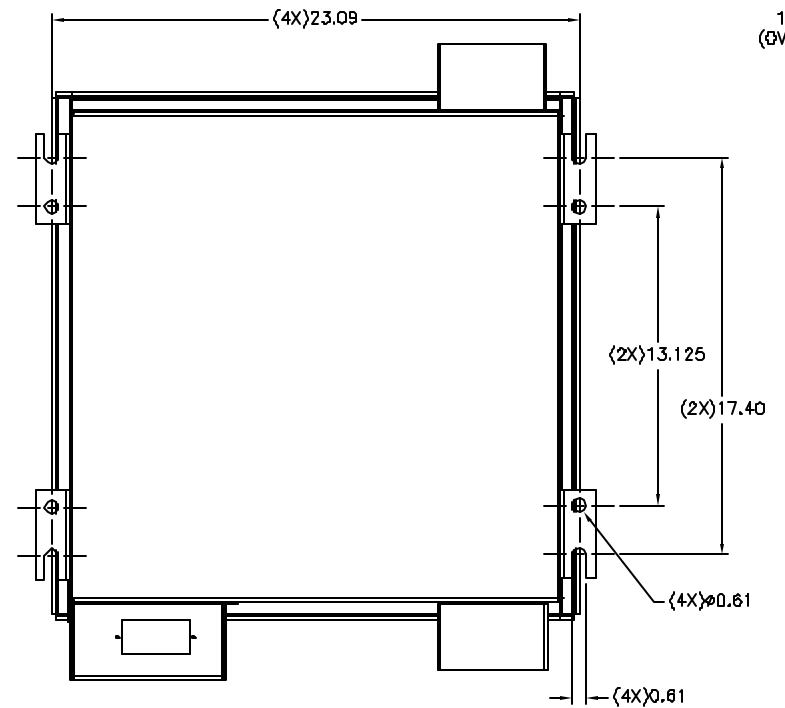
CATALOG NO.	DESCRIPTION	RACK CAPACITY
ZCB7UA	ZEBOX CEILING BOX, HOUSES ACTIVE & PASSIVE EQUIPMENT	7 RACK UNITS
ZCB5UP	ZEBOX CEILING BOX, HOUSES PASSIVE EQUIPMENT	5 RACK UNITS



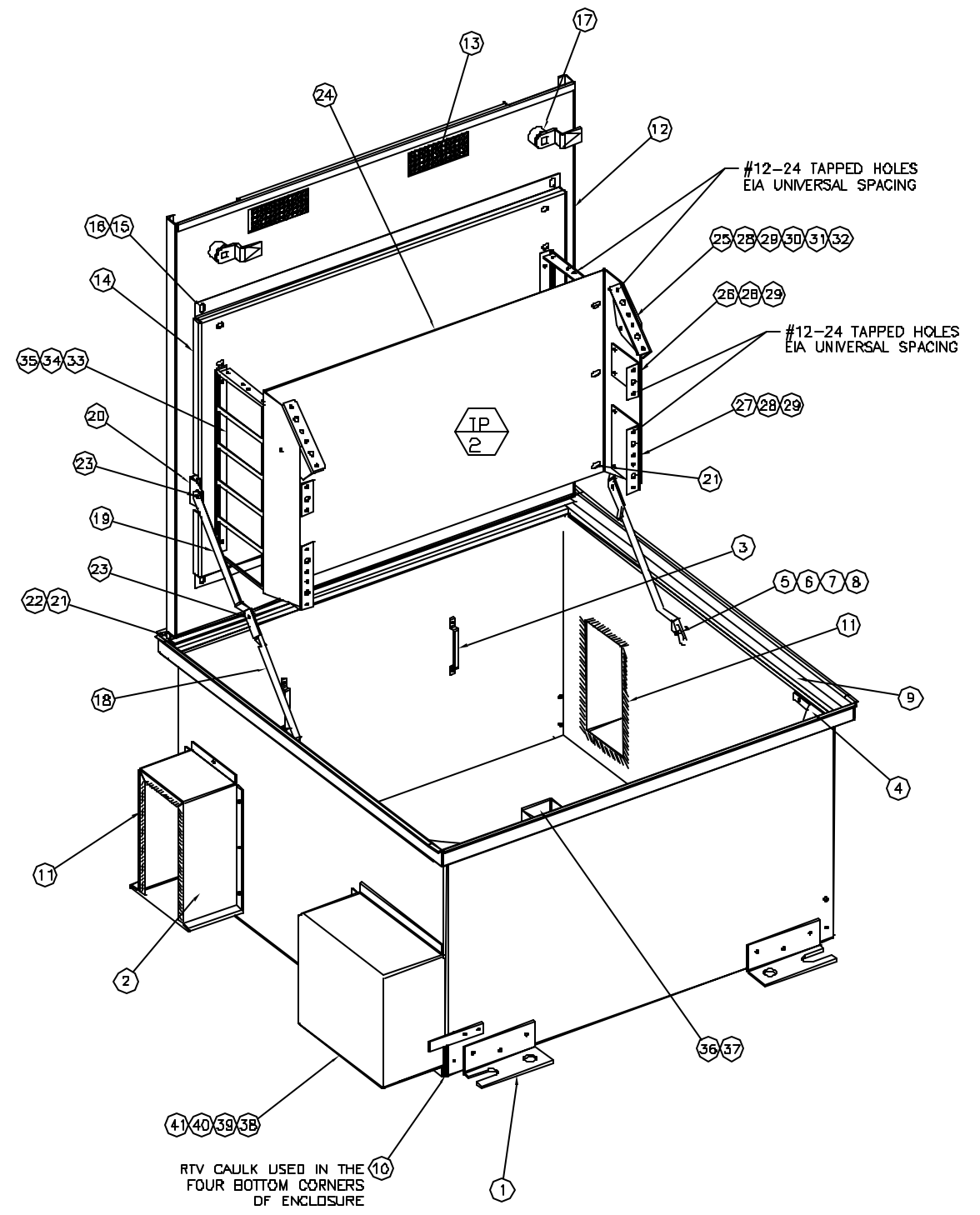
BOTTOM VIEW



SIDE VIEW



TOP VIEW



RTV CAULK USED IN THE FOUR BOTTOM CORNERS OF ENCLOSURE

REV.	EGN	DATE	DESCRIPTION	CHG BY	APPD BY
A	4894	09/25/02	INITIAL RELEASE	PSM	RM

Dimensioning and tolerance per ANSI Y14.5M-1992 UNLESS OTHERWISE SPECIFIED, DIMENSIONS ARE IN INCHES (MM). TOLERANCES: X = ±.03 (.8) XX = ±.02 (.5) XXX = ±.010 (.25) ANGLE TOL: ±1'

IN ACCEPTING OUR DRAWINGS, BLUEPRINTS, OR SUPPORTING DOCUMENTATION FOR QUOTATION OR OTHER PURPOSES, YOU AGREE NOT TO DISCLOSE TO OTHERS THE IDEAS, INFORMATION, OR DESIGN'S SHOWN HEREIN, AND THAT YOU WILL MAKE NO USE OF SAME WITHOUT PERMISSION

PROJECT REFERENCE:  
MATERIAL:  
ALL SHEET METAL  
.06 ALUMINUM  
DRAWN BY:  
PAUL S. MAGUIRE 09/25/02  
CHECKED BY:  
RANDY MNDR 10/15/02  
APPROVED BY:  
RANDY MNDR 10/15/02

**Hubbell Premise Wiring**  
HUBBELL INCORPORATED (Dairymont)  
14 Leno Hill Road, Skatagon, Connecticut 06370

TITLE: **CABINET ENCLOSURES CEILING BOX ENCLOSURE**

SIZE: **D** DRAWING NO.: **C11811** REV.: **A**

SCALE: **1/4** SHEET **1** OF **1**