

NOTES:

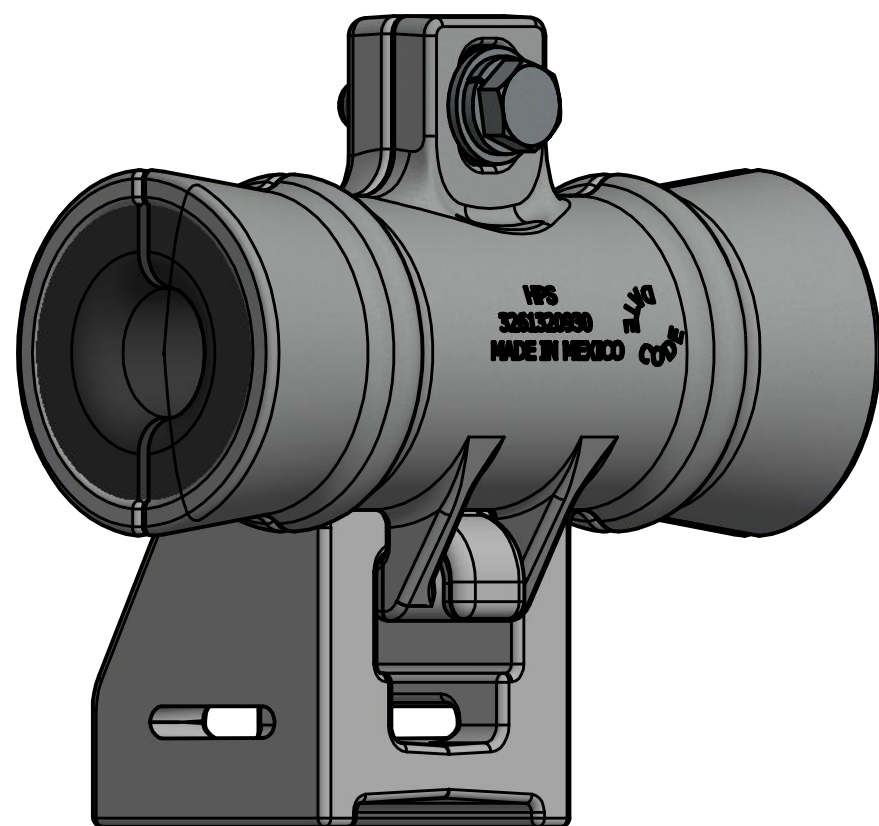
1. MATERIAL :

- Castings: Aluminum Alloy
- Inserts: Polymer
- Grommet: Rubber
- Hardware: Galvanized Steel

2. ASSEMBLY CAN BE MOUNTED TO A POLE USING A THROUGH BOLT OR A BAND

3. ASSEMBLE 10 PCS PER BOX

PART NO.	1008057	1077370000	1076570000	3261320930	1077205	HUBxxx	326131MACH	-	-
DESCRIPTION	BOLT 3/8-16x1 1/2" HH GALV	WASHER, GS LOCK 3/8	WASHER, GS FL 1.000X.438X.083	ADSS CLAMP BODY, PM CASTING	GROMMET, IT#205 RUBBER	ADSS Inserts	BODY, ADSS SUSPENSION CLAMP MACHINED	DIAMETER RANGE (IN)	DIAMETER RANGE (MM)
FINISHED GOOD	ITEM 1	ITEM 2	ITEM 3	ITEM 4	ITEM 5	ITEM 6	ITEM 7	-	-
HUBSUSF	X	X	X	X	X	-	X	-	-
HUBSUSF199	X	X	X	X	X	HUB239	X	0.426-0.475	10.8-12
HUBSUSF200	X	X	X	X	X	HUB125	X	0.476-0.525	12.1-13.3
HUBSUSF201	X	X	X	X	X	HUB126	X	0.526-0.575	13.4-14.6
HUBSUSF202	X	X	X	X	X	HUB127	X	0.576-0.625	14.7-15.9
HUBSUSF203	X	X	X	X	X	HUB128	X	0.626-0.675	16-17.1
HUBSUSF204	X	X	X	X	X	HUB129	X	0.676-0.750	17.2-19.1
HUBSUSF205	X	X	X	X	X	HUB130	X	0.751-0.825	19.2-21
HUBSUSF206	X	X	X	X	X	HUB131	X	0.826-0.900	21.1-22.9
HUBSUSF207	X	X	X	X	X	HUB132	X	0.901-0.975	23-24.8
HUBSUSF208	X	X	X	X	X	HUB133	X	0.976-1.050	24.9-26.7



74548	06/08/18	RG	SD	HPS®	HUBBELL® POWER SYSTEMS POWER SYSTEMS, INC.
EC #	DATE	CHG BY	RESP ENG		
DESC OF DWG: INITIAL RELEASE				CONFIDENTIAL: THIS DRAWING AND ITS CONTENTS ARE CONFIDENTIAL AND THE EXCLUSIVE PROPERTY OF HUBBELL POWER SYSTEMS. NO PUBLICATION, DISTRIBUTION OR COPIES MAY BE MADE WITHOUT THE WRITTEN CONSENT OF HUBBELL POWER SYSTEMS. HUBBELL POWER SYSTEMS UNPUBLISHED ALL RIGHTS RESERVED UNDER THE COPYRIGHT LAWS.	TITLE CLAMP, AL ADSS SUS FIXED ASSEMBLY DRAWING
REASON (S) FOR CHANGE: DISPOSITION OF MAT'L:					SIZE: C DWG NO.: CC-24696 DO NOT SCALE THIS DRAWING