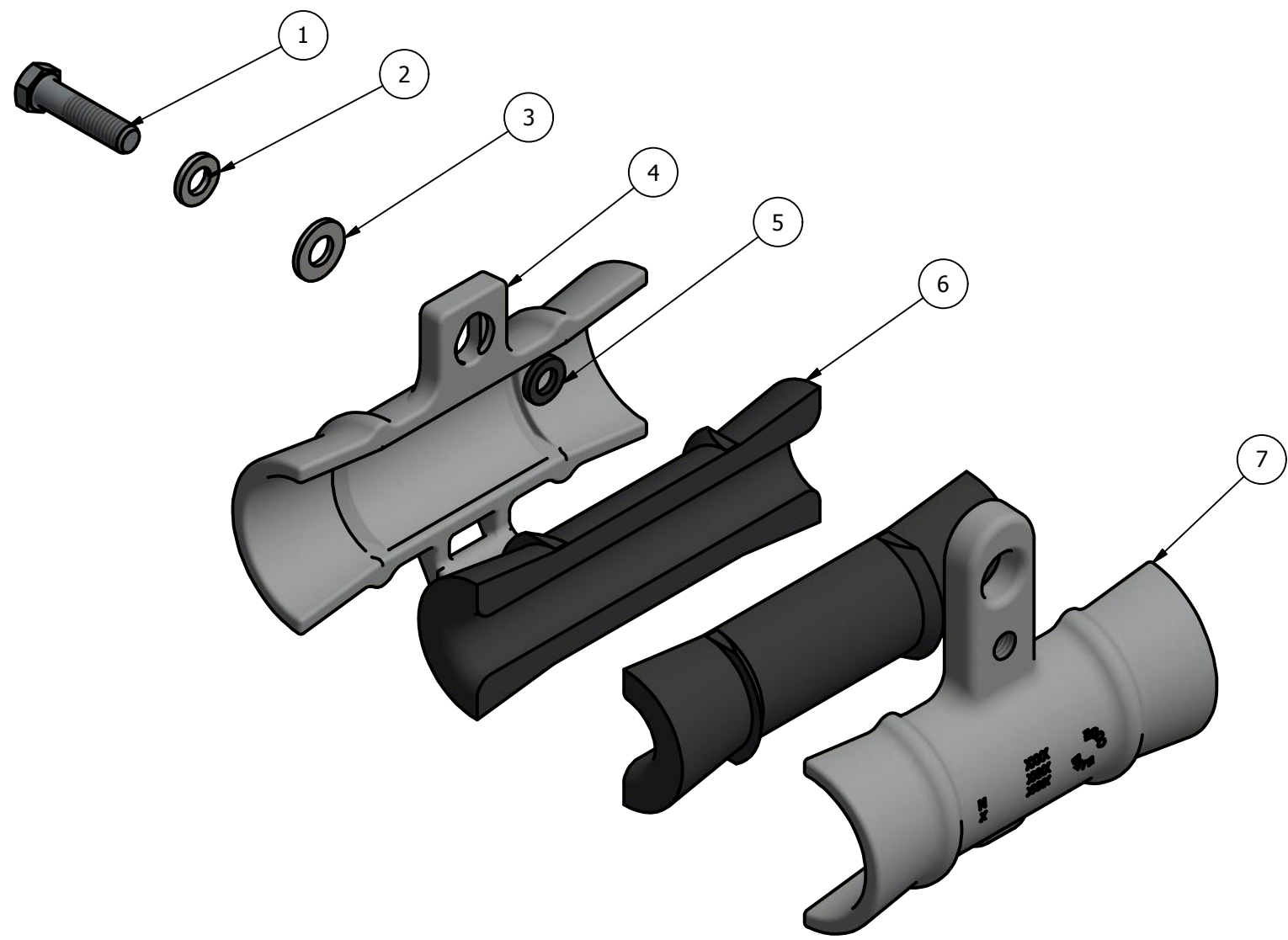


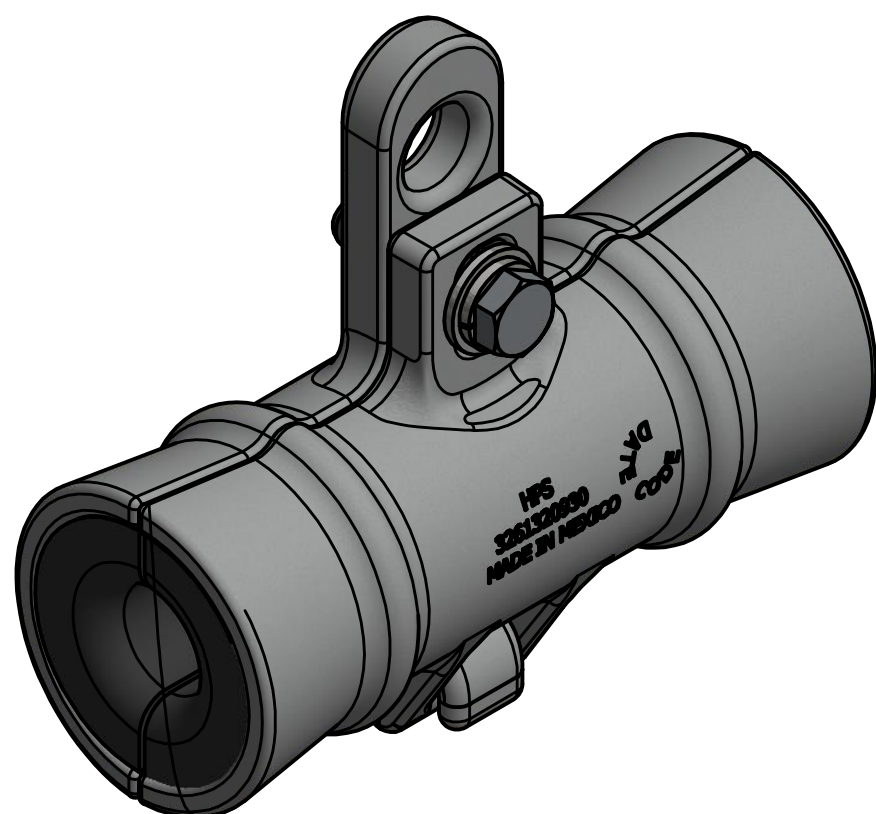
4 3 2 1



NOTES:

1. MATERIAL :
 - Castings: Aluminum Alloy
 - Inserts: Polymer
 - Grommet: Rubber
 - Hardware: Galvanized Steel
2. ASSEMBLY CAN BE MOUNTED TO A POLE USING A J-HOOK OR AN EYE-BOLT
3. ASSEMBLE 10 PCS PER BOX

| PART NO. | 1008057 | 1077370000 | 1076570000 | 3261320930 | 1077205 | HUBxxx | 326133MACH | - | - |
|---------------|----------------------------|---------------------|-------------------------------|-----------------------------|--------------------------|---------------------------|--|---------------------|---------------------|
| DESCRIPTION | BOLT 3/8-16x1 1/2" HH GALV | WASHER, GS LOCK 3/8 | WASHER, GS FL 1.000X.438X.083 | ADSS CLAMP BODY, PM CASTING | GROMMET, IT#205 NEOPRENE | Polyurethane ADSS Inserts | ADSS Hanging Suspension Clamp, MACHINING | DIAMETER RANGE (IN) | DIAMETER RANGE (MM) |
| FINISHED GOOD | ITEM 1 | ITEM 2 | ITEM 3 | ITEM 4 | ITEM 5 | ITEM 6 | ITEM 7 | - | - |
| HUBSUSH | X | X | X | X | X | NONE | X | - | - |
| HUBSUSH199 | X | X | X | X | X | HUB239 | X | 0.426-0.475 | 10.8-12 |
| HUBSUSH200 | X | X | X | X | X | HUB125 | X | 0.476-0.525 | 12.1-13.3 |
| HUBSUSH201 | X | X | X | X | X | HUB126 | X | 0.526-0.575 | 13.4-14.6 |
| HUBSUSH202 | X | X | X | X | X | HUB127 | X | 0.576-0.625 | 14.7-15.9 |
| HUBSUSH203 | X | X | X | X | X | HUB128 | X | 0.626-0.675 | 16-17.1 |
| HUBSUSH204 | X | X | X | X | X | HUB129 | X | 0.676-0.750 | 17.2-19.1 |
| HUBSUSH205 | X | X | X | X | X | HUB130 | X | 0.751-0.825 | 19.2-21 |
| HUBSUSH206 | X | X | X | X | X | HUB131 | X | 0.826-0.900 | 21.1-22.9 |
| HUBSUSH207 | X | X | X | X | X | HUB132 | X | 0.901-0.975 | 23-24.8 |
| HUBSUSH208 | X | X | X | X | X | HUB133 | X | 0.976-1.050 | 24.9-26.7 |



| | | | | | |
|---|----------|--------|----------|---|---|
| 74342 | 05/22/18 | RG | SD | HPS® | HUBBELL® POWER SYSTEMS POWER SYSTEMS, INC. |
| EC # | DATE | CHG BY | RESP ENG | | |
| DESC OF DWG: INITIAL RELEASE | | | | CONFIDENTIAL: THIS DRAWING AND ITS CONTENTS ARE CONFIDENTIAL AND THE EXCLUSIVE PROPERTY OF HUBBELL POWER SYSTEMS. NO PUBLICATION, DISTRIBUTION OR COPIES MAY BE MADE WITHOUT THE WRITTEN CONSENT OF HUBBELL POWER SYSTEMS. HUBBELL POWER SYSTEMS UNPUBLISHED ALL RIGHTS RESERVED UNDER THE COPYRIGHT LAWS | TITLE CLAMP, AL ADSS SUS HANGING ASSEMBLY DRAWING |
| REASON (S) FOR CHANGE: DISPOSITION OF MAT'L: | | | | | SIZE C |
| | | | | CAT / PART / ASSY NO. REFER TO TABLE | REV 00 |
| | | | | DO NOT SCALE THIS DRAWING | DRN BY RG |
| | | | | DATE 05/22/18 | SHEET 1 OF 1 |

4 3 2 1