

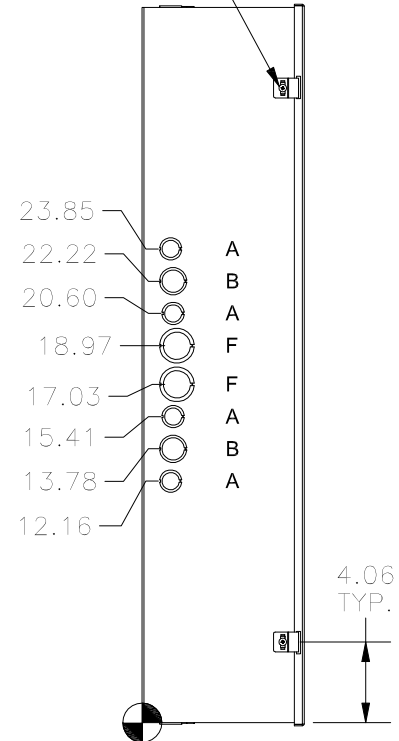
TOP KO DIMENSIONS ARE IDENTICAL TO BOTTOM KO DIMENSIONS

0.88 TYP. FOR ALL FOUR SIDES

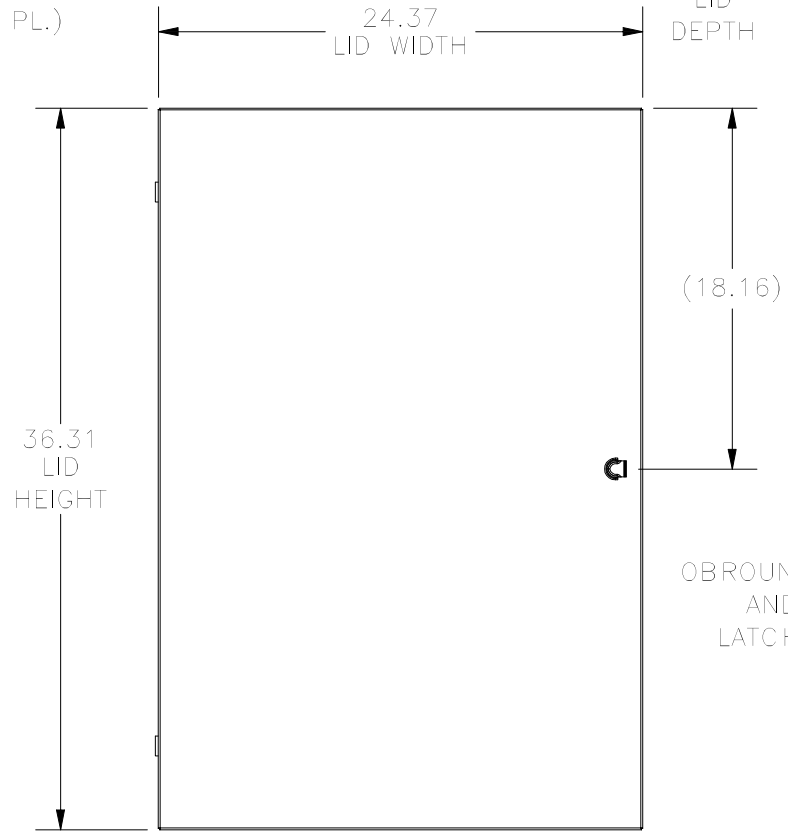


TOP VIEW

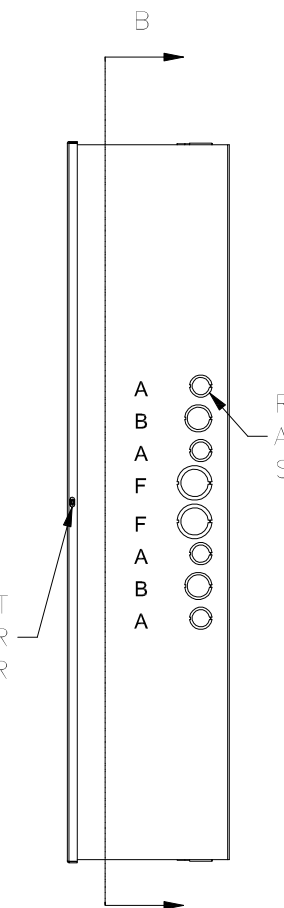
8-32X3/8" TRUSS HEAD SCREW AND HINGE CLIP (2 PL.)



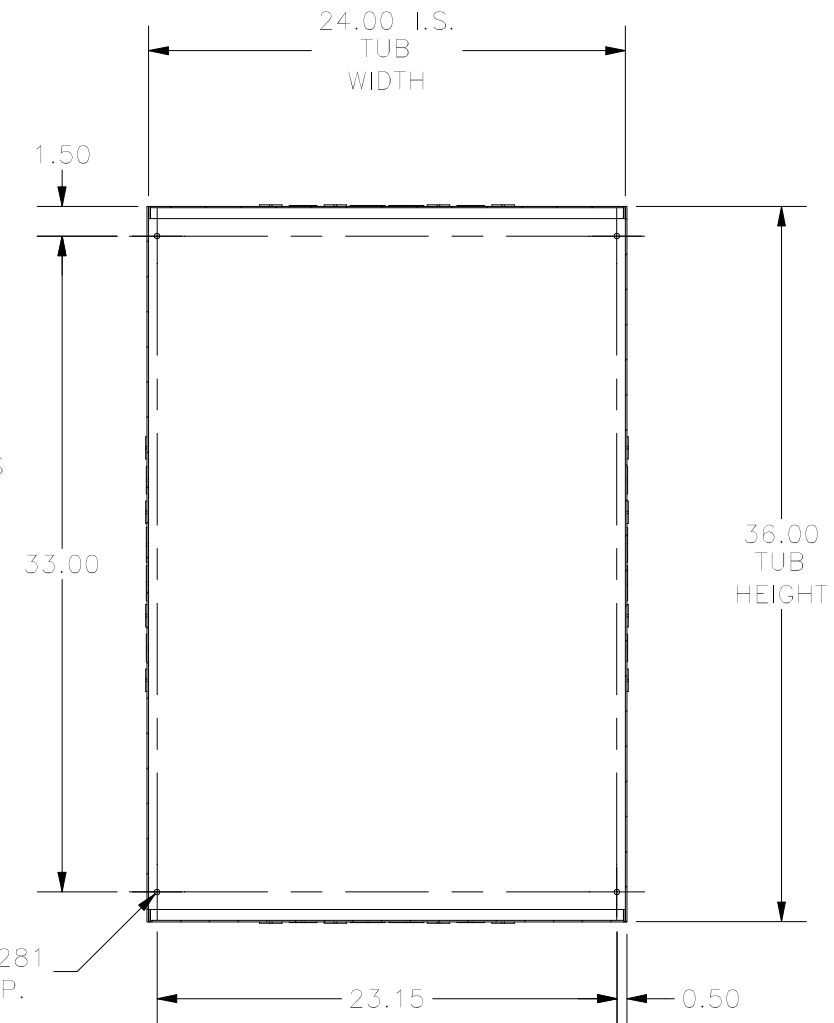
LEFT SIDE VIEW



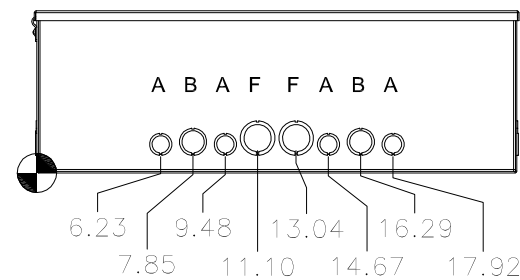
FRONT VIEW



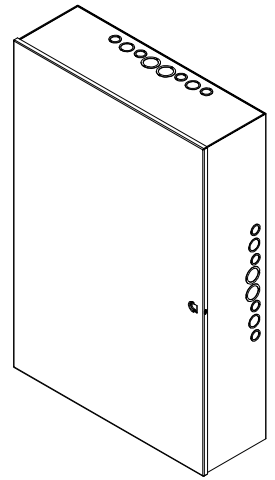
RIGHT SIDE VIEW



**SECTION B-B
(INSIDE VIEW OF BACK)**



BOTTOM VIEW



KNOCKOUT TABLE	
SIZE	DESCRIPTION
A	1/2" TO 3/4"
B	3/4 TO 1"
F	1" TO 1-1/4"

PART#: A243608
(DATA SUBJECT TO CHANGE WITHOUT NOTICE)

THIS DRAWING IS PROPERTY OF HUBBELL INC. WIEGMANN
ALL INFORMATION IS PROPRIETARY AND NOT TO BE DUPLICATED