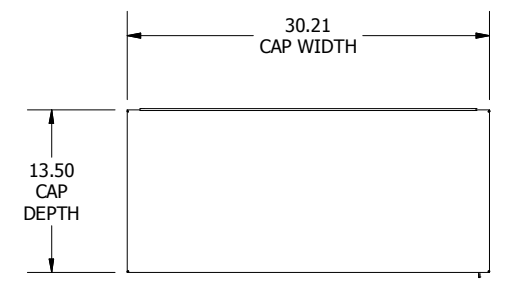
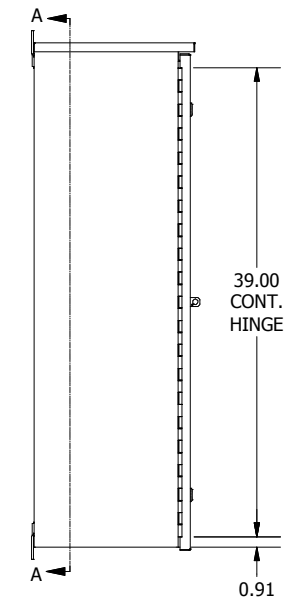


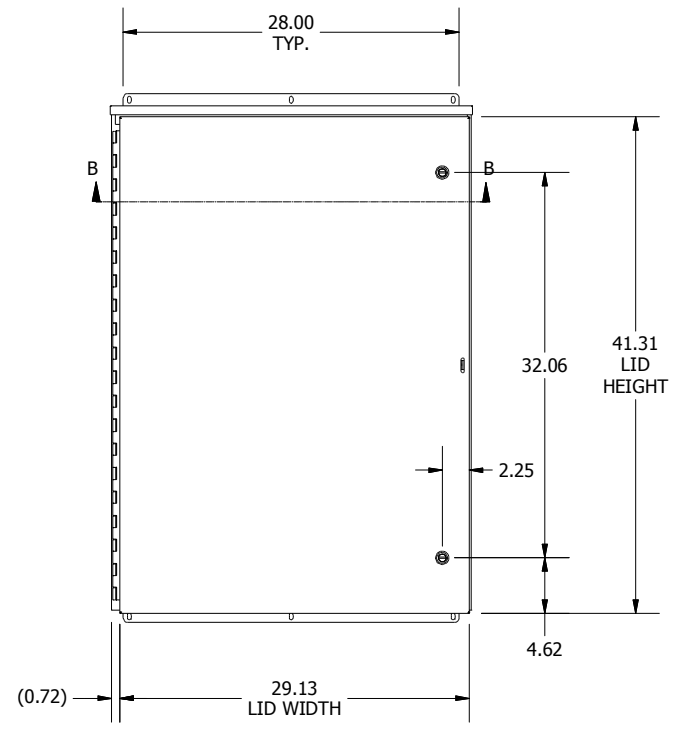
REVISION HISTORY			
REV	DESCRIPTION	BY	DATE
A	ECO#: HFW161018-02	VD	02/06/2017



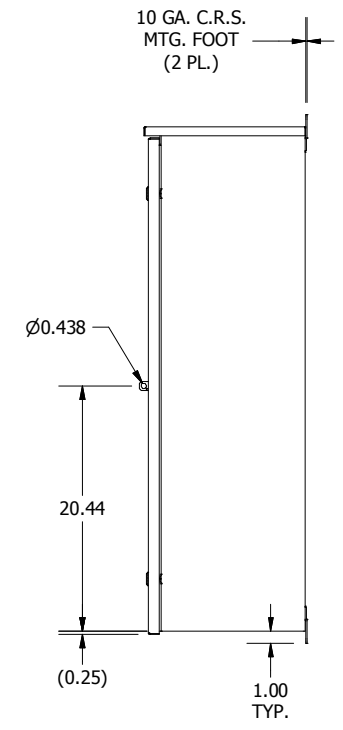
**TOP VIEW**



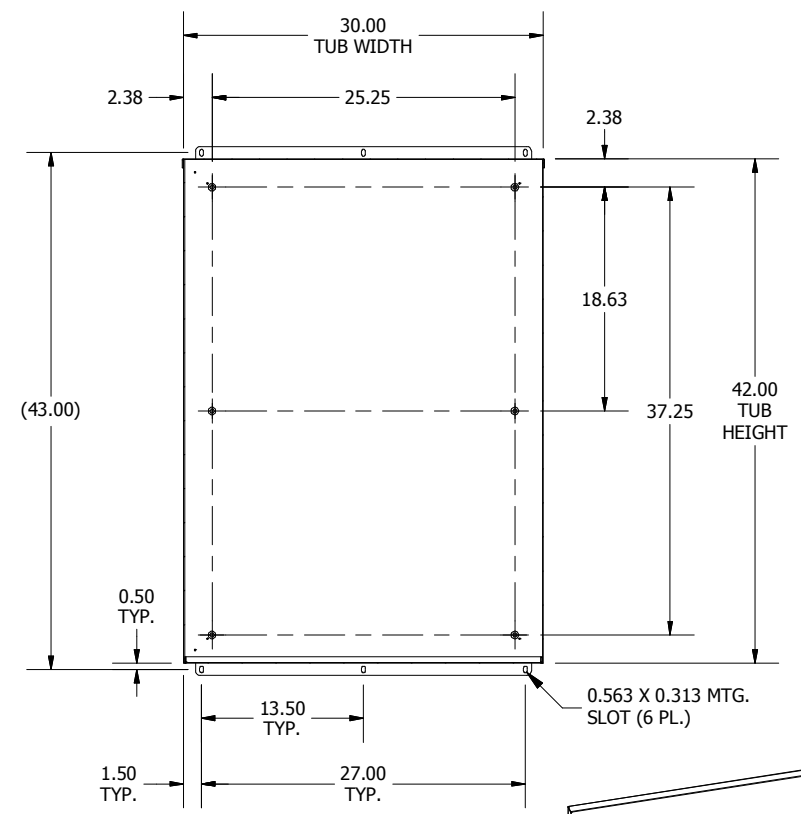
**LEFT SIDE VIEW**



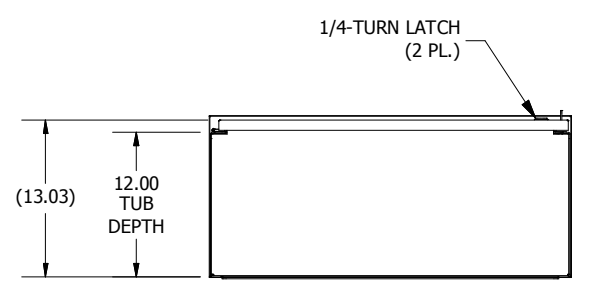
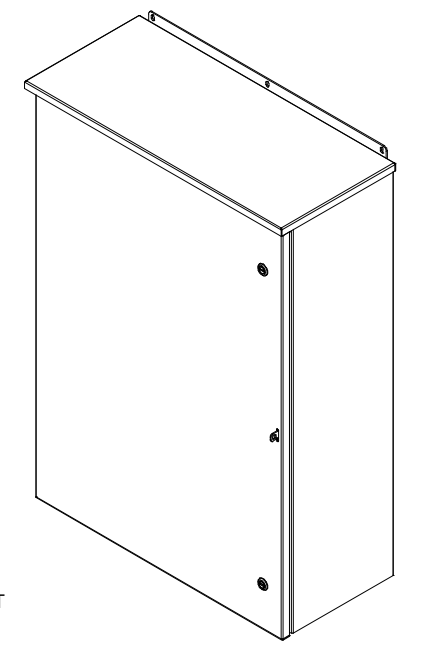
**FRONT VIEW**



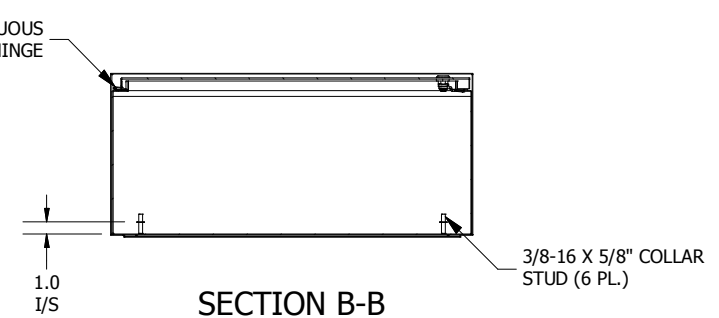
**RIGHT SIDE VIEW**



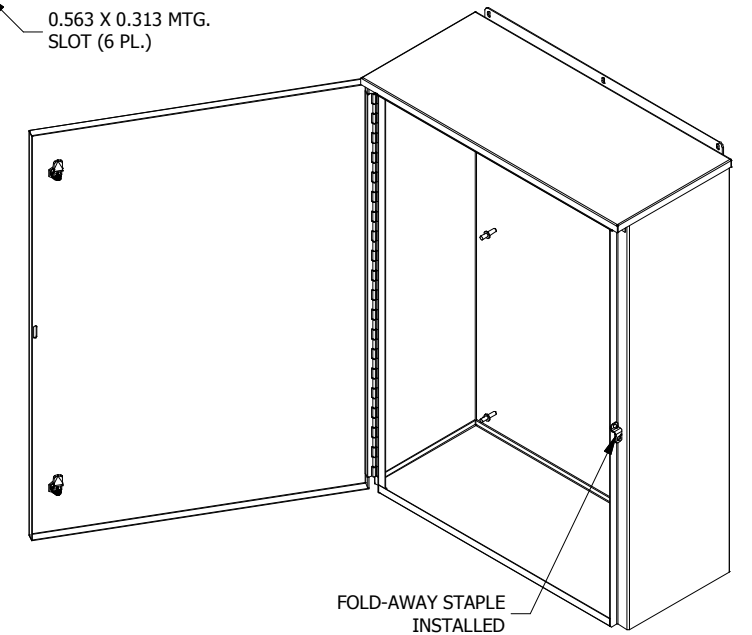
**SECTION A-A  
(INSIDE BACK OF ENCL.)**



**BOTTOM VIEW**



**SECTION B-B  
(INSIDE TOP OF ENCL.)**



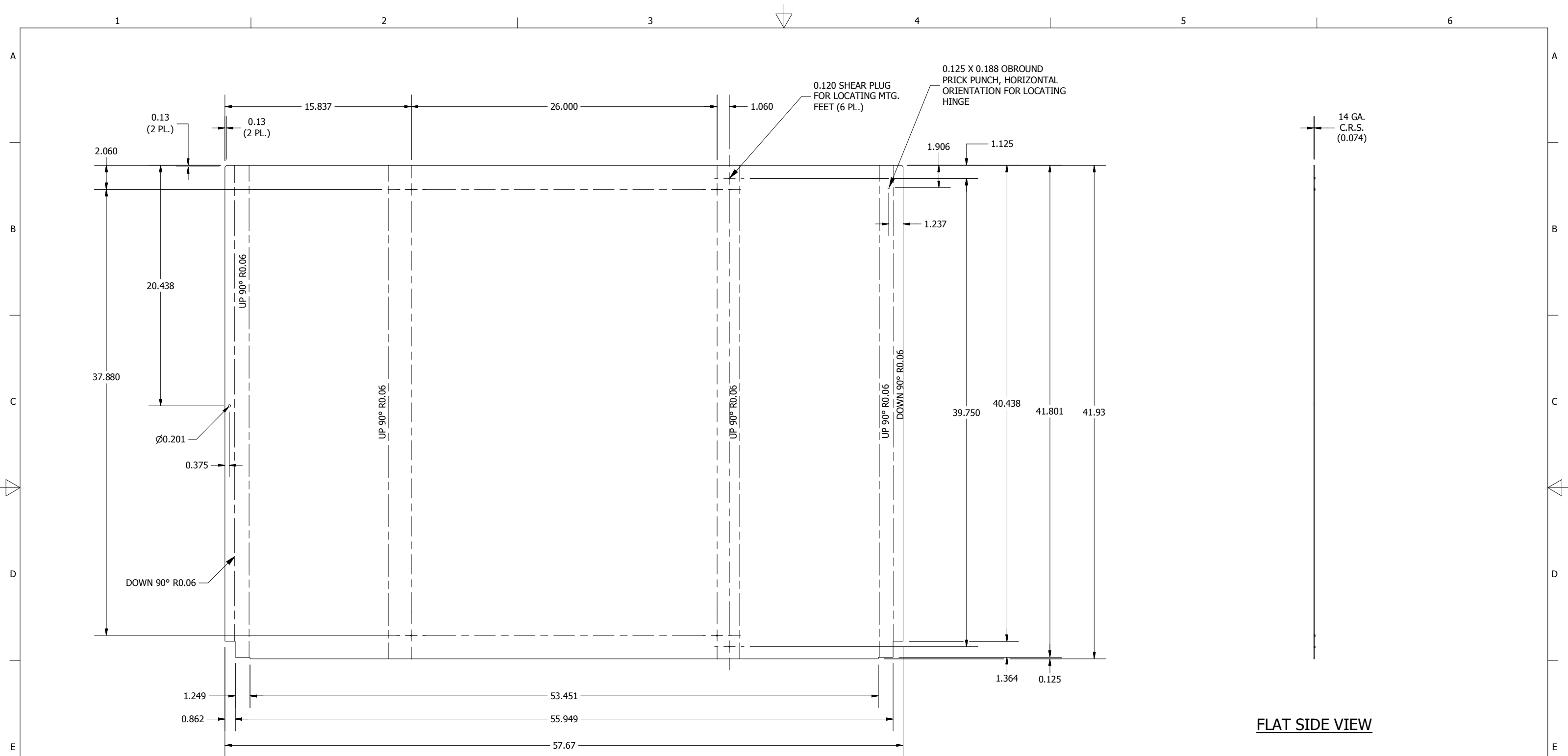
- NOTES:**
1. ALL DIMENSIONS ARE FROM OUTSIDE UNLESS OTHERWISE NOTED.
  2. ENCLOSURE IS FABRICATED FROM 14 GA. CARBON STEEL.
  3. COLLAR STUDS ARE PROVIDED FOR MOUNTING OPTIONAL SUB PANEL.
  4. ENCLOSURE IS WELDED TOGETHER.
  5. FINISH: ANSI-61 GRAY TEXTURE POLYESTER POWDER (INTERIOR/EXTERIOR).
  6. ENCLOSURE IS RATED UL TYPE 3R.

DIMENSIONS ARE IN INCHES (MM). TOLERANCES UNLESS OTHERWISE SPECIFIED ARE AS FOLLOWS:  
 .X = ±.06 (1.6)  
 .XX = ±.031 (.8)  
 .XXX = ±.016 (.25)  
 Ø = ±.005  
 ANGLE TOL ±1°

**HUBBELL** **WIEGMANN**  
 FREEBURG, ILLINOIS, USA

—NOTICE— THIS DRAWING IS THE PROPERTY OF WIEGMANN, A DIVISION OF HUBBELL INCORPORATED. IT IS LOANED TO YOU AND MUST NOT BE USED IN ANY WAY DETRIMENTAL TO THE INTEREST OF WIEGMANN.

PART NUMBER: RHC423012	MATERIAL: SEE NOTE	SCALE: NONE	CHK'D DATE: 7/8/2014
DESCRIPTION: RHC, NEMA 3R ENCL., CS, 42X30X12		DRAWN BY: PS	CREATED ON: 7/8/2014
		CHK'D BY: VR	DWG. NO. HWD RHC423012_1
		REV. A	
		SHEET 1 OF 9	



**BLR FLAT PATTERN VIEW**

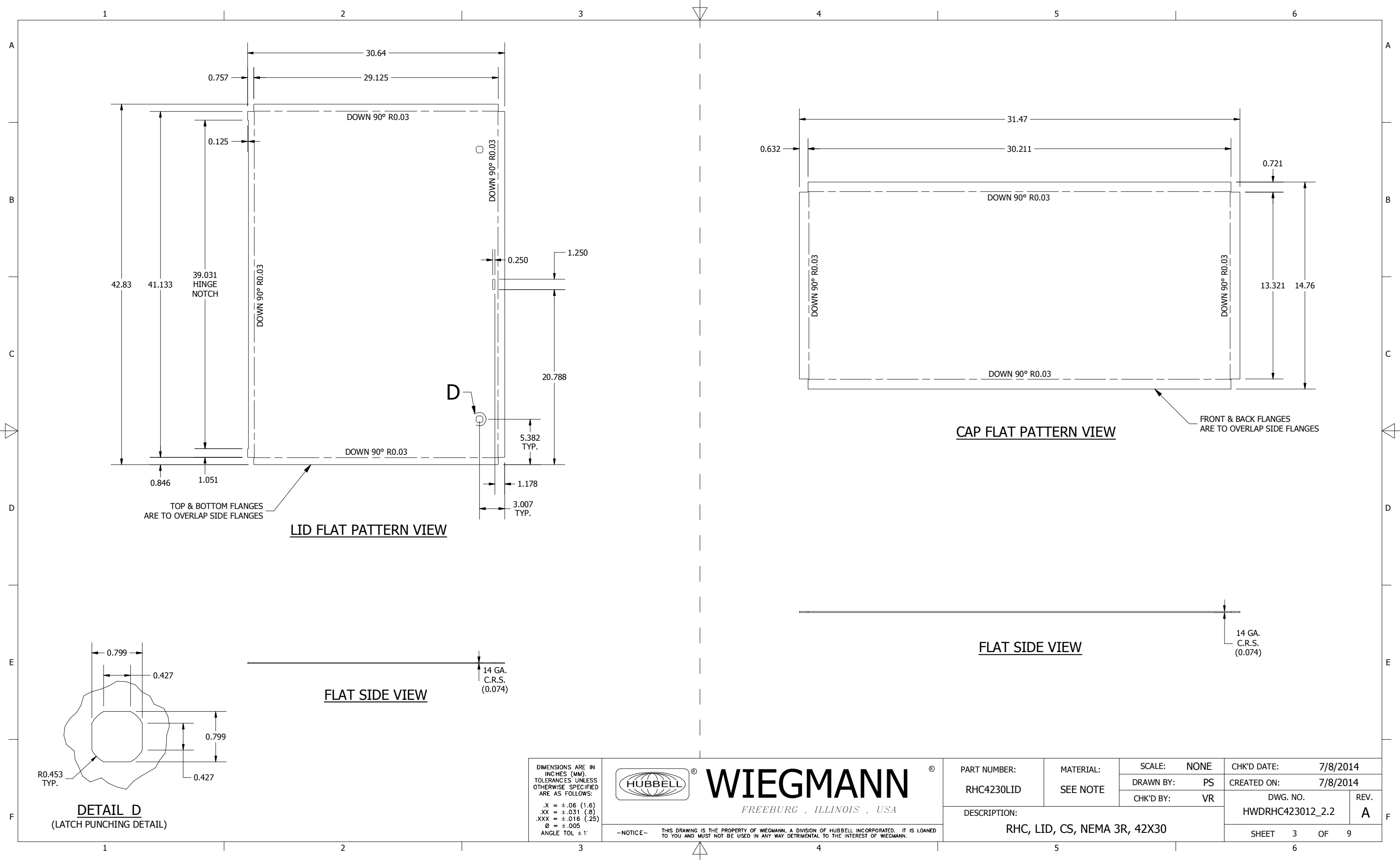
**FLAT SIDE VIEW**

DIMENSIONS ARE IN INCHES (MM). TOLERANCES UNLESS OTHERWISE SPECIFIED ARE AS FOLLOWS:  
 .X = ±.06 (1.6)  
 .XX = ±.031 (.8)  
 .XXX = ±.016 (.25)  
 Ø = ±.005  
 ANGLE TOL ± 1°

**HUBBELL**® **WIEGMANN**®  
 FREEBURG, ILLINOIS, USA

—NOTICE— THIS DRAWING IS THE PROPERTY OF WIEGMANN, A DIVISION OF HUBBELL INCORPORATED. IT IS LOANED TO YOU AND MUST NOT BE USED IN ANY WAY DETRIMENTAL TO THE INTEREST OF WIEGMANN.

PART NUMBER: RHC423012BLR	MATERIAL: SEE NOTE	SCALE: NONE	CHK'D DATE: 7/8/2014
		DRAWN BY: PS	CREATED ON: 7/8/2014
DESCRIPTION: RHC, BLR, MEDIUM, CS, 42X30X12		CHK'D BY: VR	DWG. NO. HWD RHC423012_2.1
		REV. <b>A</b>	
		SHEET 2 OF 9	



TOP & BOTTOM FLANGES  
ARE TO OVERLAP SIDE FLANGES

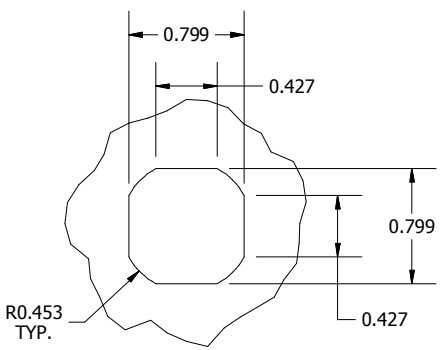
**LID FLAT PATTERN VIEW**

FRONT & BACK FLANGES  
ARE TO OVERLAP SIDE FLANGES

**CAP FLAT PATTERN VIEW**

**FLAT SIDE VIEW**

**FLAT SIDE VIEW**



**DETAIL D**  
(LATCH PUNCHING DETAIL)

DIMENSIONS ARE IN  
INCHES (MM).  
TOLERANCES UNLESS  
OTHERWISE SPECIFIED  
ARE AS FOLLOWS:  
.X = ±.06 (1.6)  
.XX = ±.031 (.8)  
.XXX = ±.016 (.25)  
Ø = ±.005  
ANGLE TOL ±1'

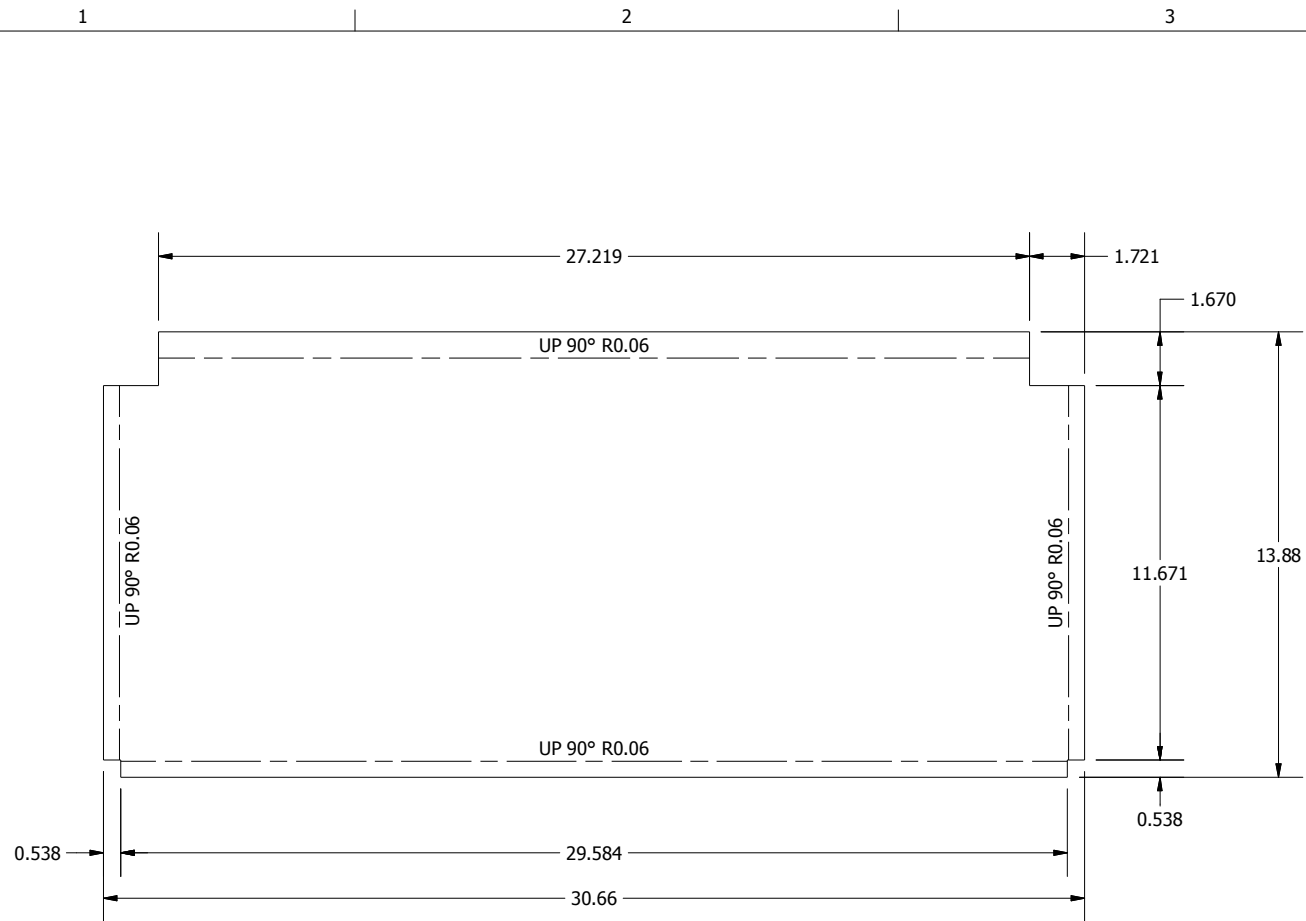


**WIEGMANN**

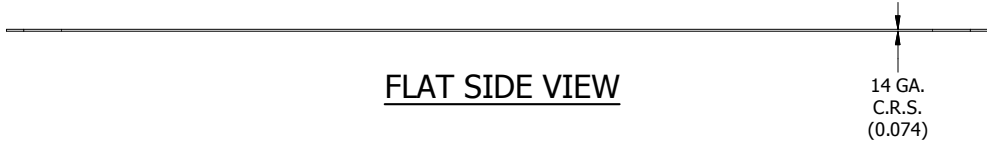
FREEBURG , ILLINOIS , USA

-NOTICE- THIS DRAWING IS THE PROPERTY OF WIEGMANN, A DIVISION OF HUBBELL INCORPORATED. IT IS LOANED TO YOU AND MUST NOT BE USED IN ANY WAY DETRIMENTAL TO THE INTEREST OF WIEGMANN.

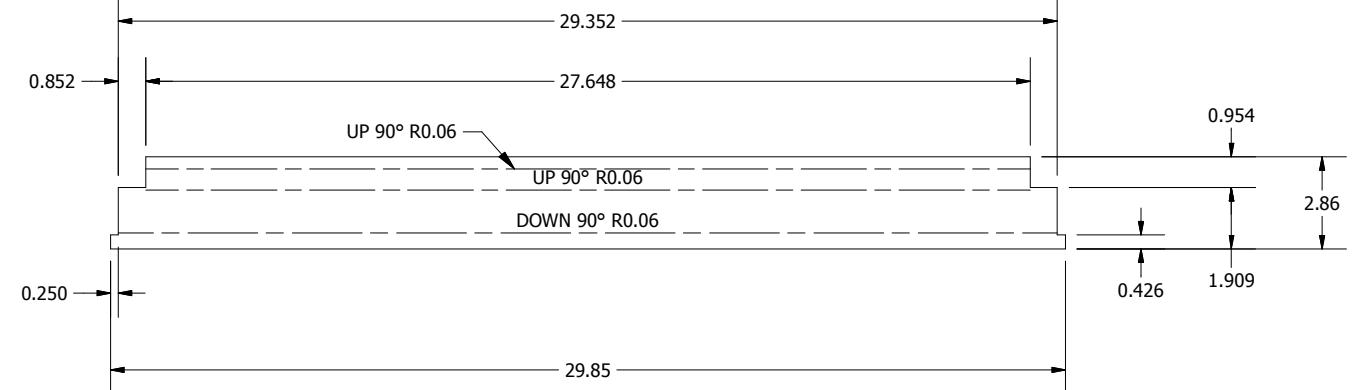
PART NUMBER: RHC4230LID	MATERIAL: SEE NOTE	SCALE: NONE	CHK'D DATE: 7/8/2014
DESCRIPTION: RHC, LID, CS, NEMA 3R, 42X30		DRAWN BY: PS	CREATED ON: 7/8/2014
		CHK'D BY: VR	DWG. NO. HWRHC423012_2.2
			REV. <b>A</b>
SHEET 3 OF 9			



BOTTOM ENDWALL FLAT PATTERN VIEW



FLAT SIDE VIEW



TOP ENDWALL FLAT PATTERN VIEW



FLAT SIDE VIEW

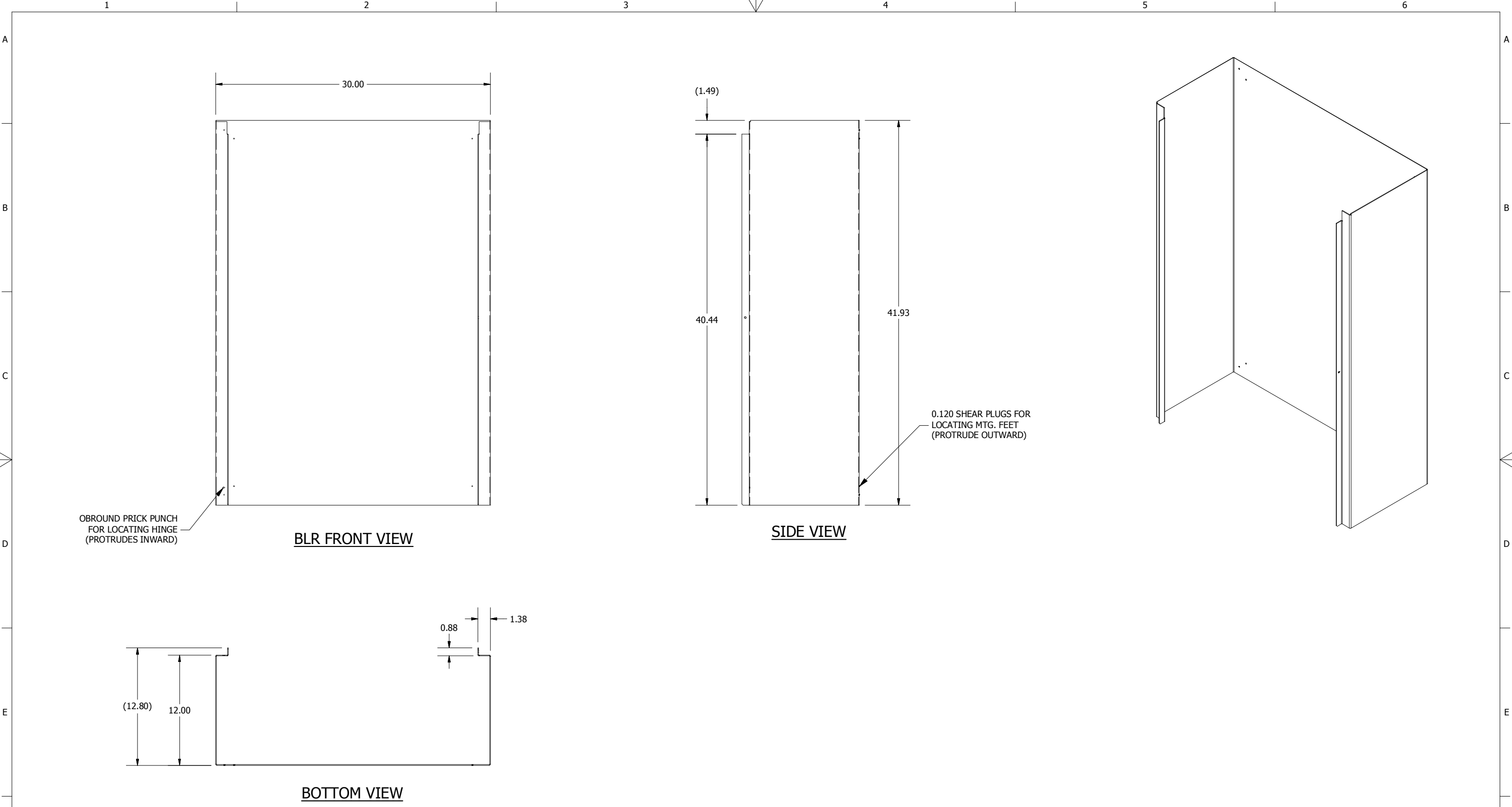
DIMENSIONS ARE IN INCHES (MM). TOLERANCES UNLESS OTHERWISE SPECIFIED ARE AS FOLLOWS:  
 .X = ±.06 (1.6)  
 .XX = ±.031 (.8)  
 .XXX = ±.016 (.25)  
 Ø = ±.005  
 ANGLE TOL ± 1'



**WIEGMANN**  
 FREEBURG, ILLINOIS, USA

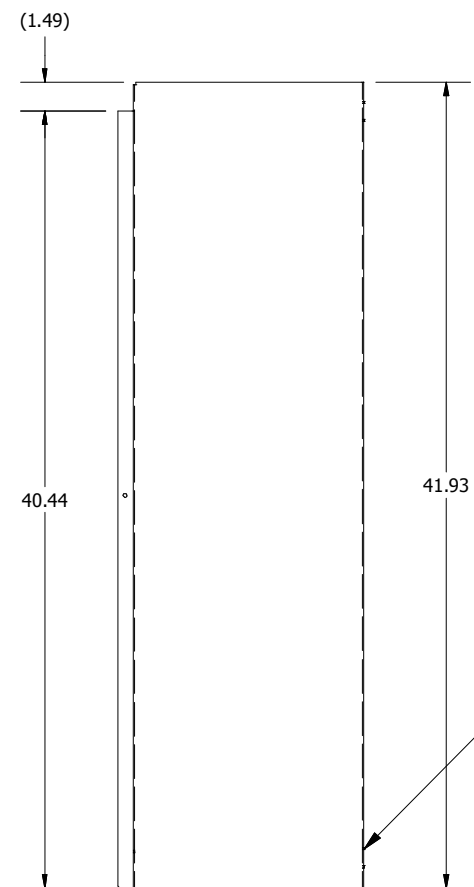
—NOTICE— THIS DRAWING IS THE PROPERTY OF WIEGMANN, A DIVISION OF HUBBELL INCORPORATED. IT IS LOANED TO YOU AND MUST NOT BE USED IN ANY WAY DETRIMENTAL TO THE INTEREST OF WIEGMANN.

PART NUMBER: RHC3012BTM	MATERIAL: SEE NOTE	SCALE: NONE	CHK'D DATE: 7/8/2014
DESCRIPTION: RHC, BTM, CS, NEMA 3R, 30X12		DRAWN BY: PS	CREATED ON: 7/8/2014
		CHK'D BY: VR	DWG. NO. HWDRHC423012_2.3
		REV. A	
		SHEET 4 OF 9	



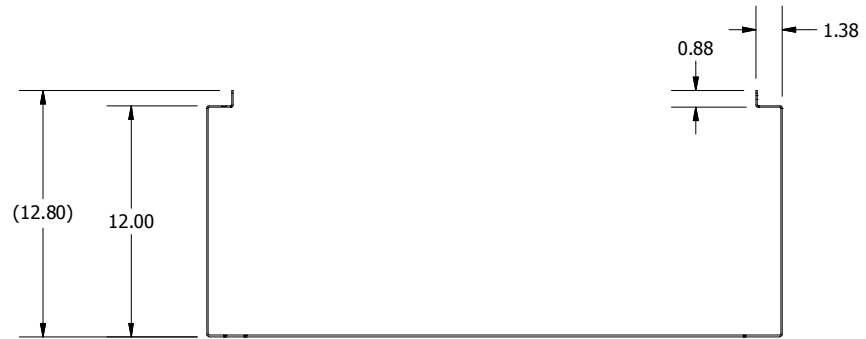
OBROUND PRICK PUNCH  
FOR LOCATING HINGE  
(PROTRUDES INWARD)

**BLR FRONT VIEW**

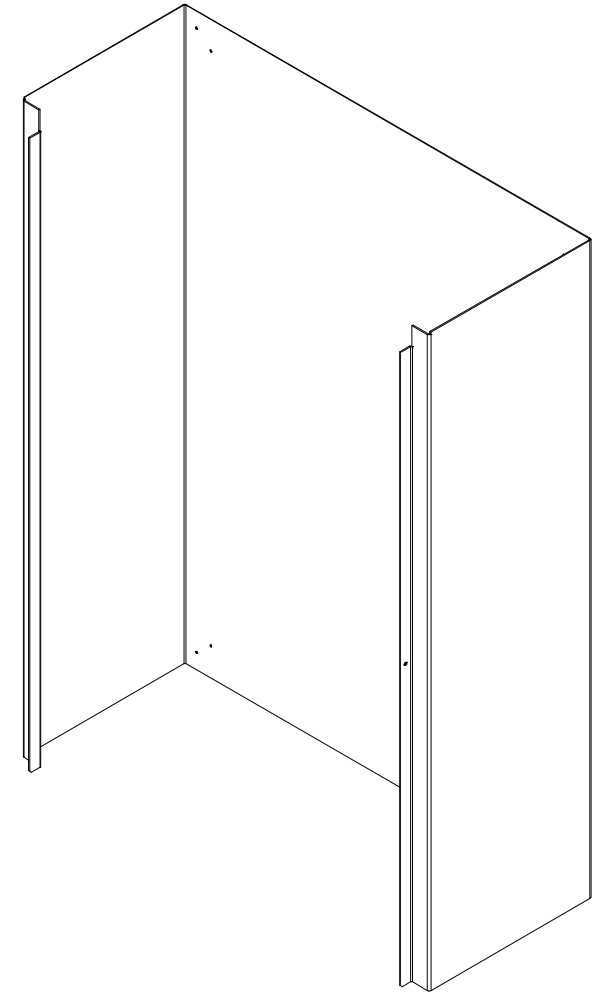


**SIDE VIEW**

0.120 SHEAR PLUGS FOR  
LOCATING MTG. FEET  
(PROTRUDE OUTWARD)



**BOTTOM VIEW**



DIMENSIONS ARE IN  
INCHES (MM).  
TOLERANCES UNLESS  
OTHERWISE SPECIFIED  
ARE AS FOLLOWS:  
.X = ±.06 (1.6)  
.XX = ±.031 (.8)  
.XXX = ±.016 (.25)  
Ø = ±.005  
ANGLE TOL ±1'



**WIEGMANN**  
FREEBURG, ILLINOIS, USA

—NOTICE— THIS DRAWING IS THE PROPERTY OF WIEGMANN, A DIVISION OF HUBBELL INCORPORATED. IT IS LOANED TO YOU AND MUST NOT BE USED IN ANY WAY DETRIMENTAL TO THE INTEREST OF WIEGMANN.

PART NUMBER:  
RHC423012BLR

MATERIAL:  
SEE NOTE

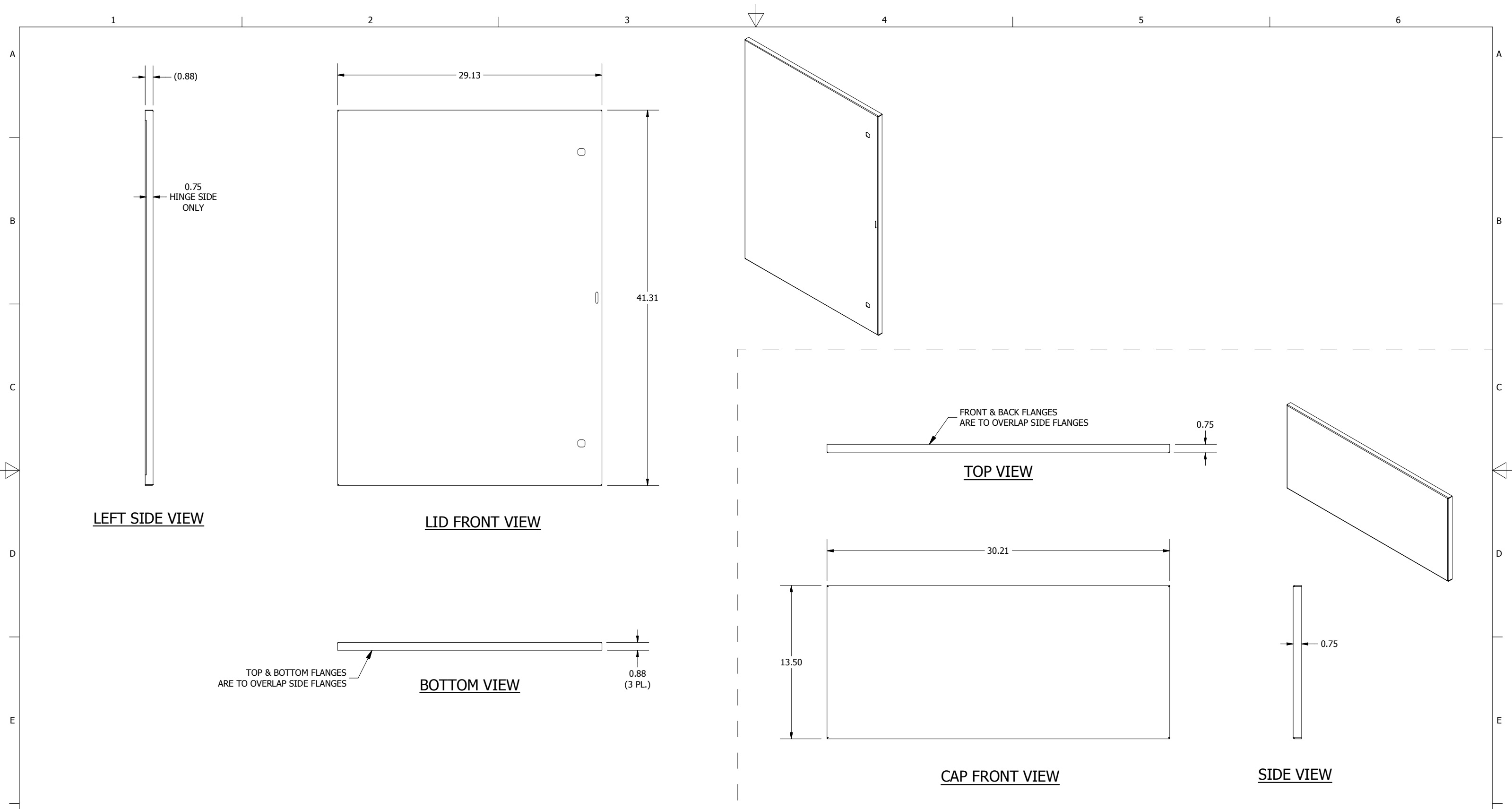
SCALE: NONE  
DRAWN BY: PS  
CHK'D BY: VR

CHK'D DATE: 7/8/2014  
CREATED ON: 7/8/2014

DWG. NO.  
HWD RHC423012\_3.1  
REV.  
A

DESCRIPTION:  
RHC, BLR, MEDIUM, CS, 42X30X12

SHEET 5 OF 9



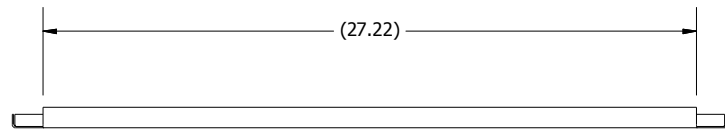
DIMENSIONS ARE IN INCHES (MM). TOLERANCES UNLESS OTHERWISE SPECIFIED ARE AS FOLLOWS:  
 .X = ±.06 (1.6)  
 .XX = ±.031 (.8)  
 .XXX = ±.016 (.25)  
 Ø = ±.005  
 ANGLE TOL ±1'



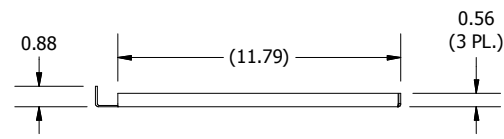
**WIEGMANN**  
 FREEBURG, ILLINOIS, USA

—NOTICE— THIS DRAWING IS THE PROPERTY OF WIEGMANN, A DIVISION OF HUBBELL INCORPORATED. IT IS LOANED TO YOU AND MUST NOT BE USED IN ANY WAY DETRIMENTAL TO THE INTEREST OF WIEGMANN.

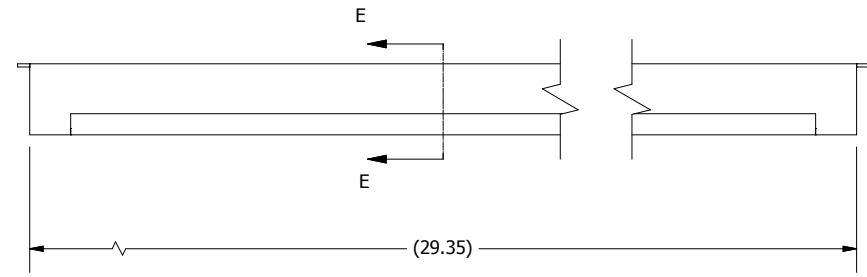
PART NUMBER: RHC4230LID	MATERIAL: SEE NOTE	SCALE: NONE	CHK'D DATE: 7/8/2014
DESCRIPTION: RHC, LID, CS, NEMA 3R, 42X30		DRAWN BY: PS	CREATED ON: 7/8/2014
		CHK'D BY: VR	DWG. NO. HWDRHC423012_3.2
		SHEET 6 OF 9	REV. A



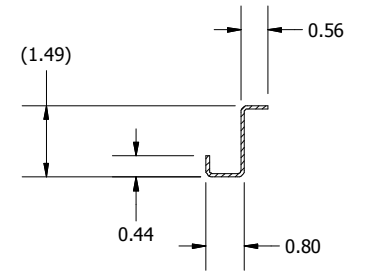
**BOTTOM ENDWALL FRONT VIEW**



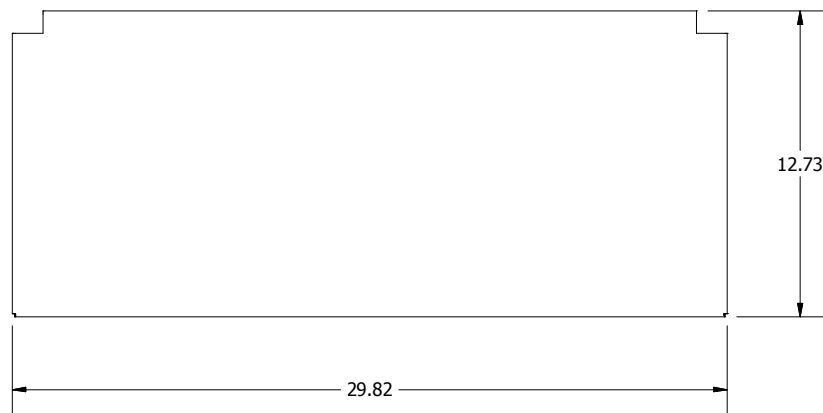
**SIDE VIEW**



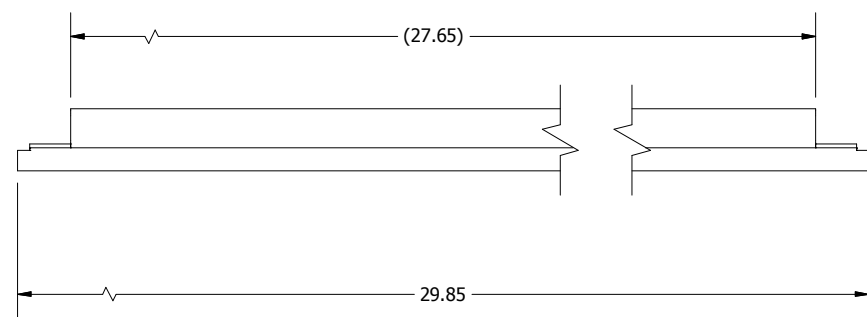
**TOP ENDWALL FRONT VIEW**



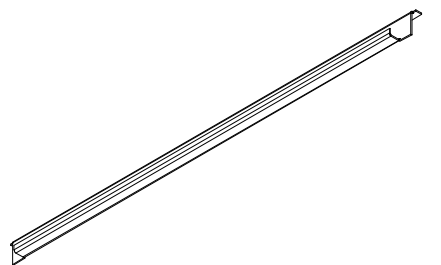
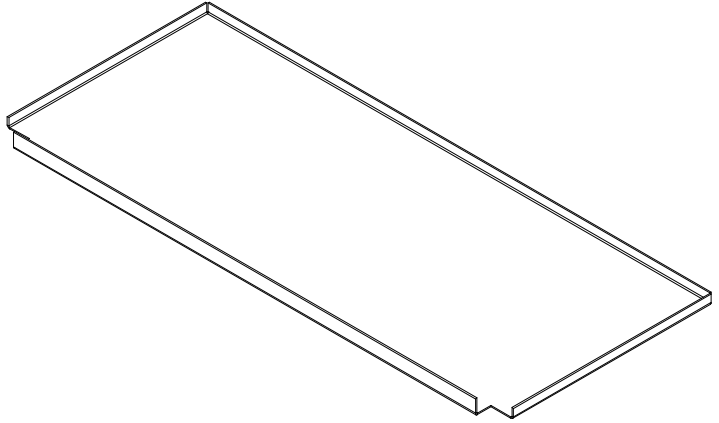
**SECTION E-E**



**BOTTOM VIEW**



**BOTTOM VIEW**



DIMENSIONS ARE IN INCHES (MM). TOLERANCES UNLESS OTHERWISE SPECIFIED ARE AS FOLLOWS:  
 .X = ±.06 (1.6)  
 .XX = ±.031 (.8)  
 .XXX = ±.016 (.25)  
 Ø = ±.005  
 ANGLE TOL ±1°



**WIEGMANN**  
 FREEBURG, ILLINOIS, USA

—NOTICE— THIS DRAWING IS THE PROPERTY OF WIEGMANN, A DIVISION OF HUBBELL INCORPORATED. IT IS LOANED TO YOU AND MUST NOT BE USED IN ANY WAY DETRIMENTAL TO THE INTEREST OF WIEGMANN.

PART NUMBER:  
RHC3012BTM

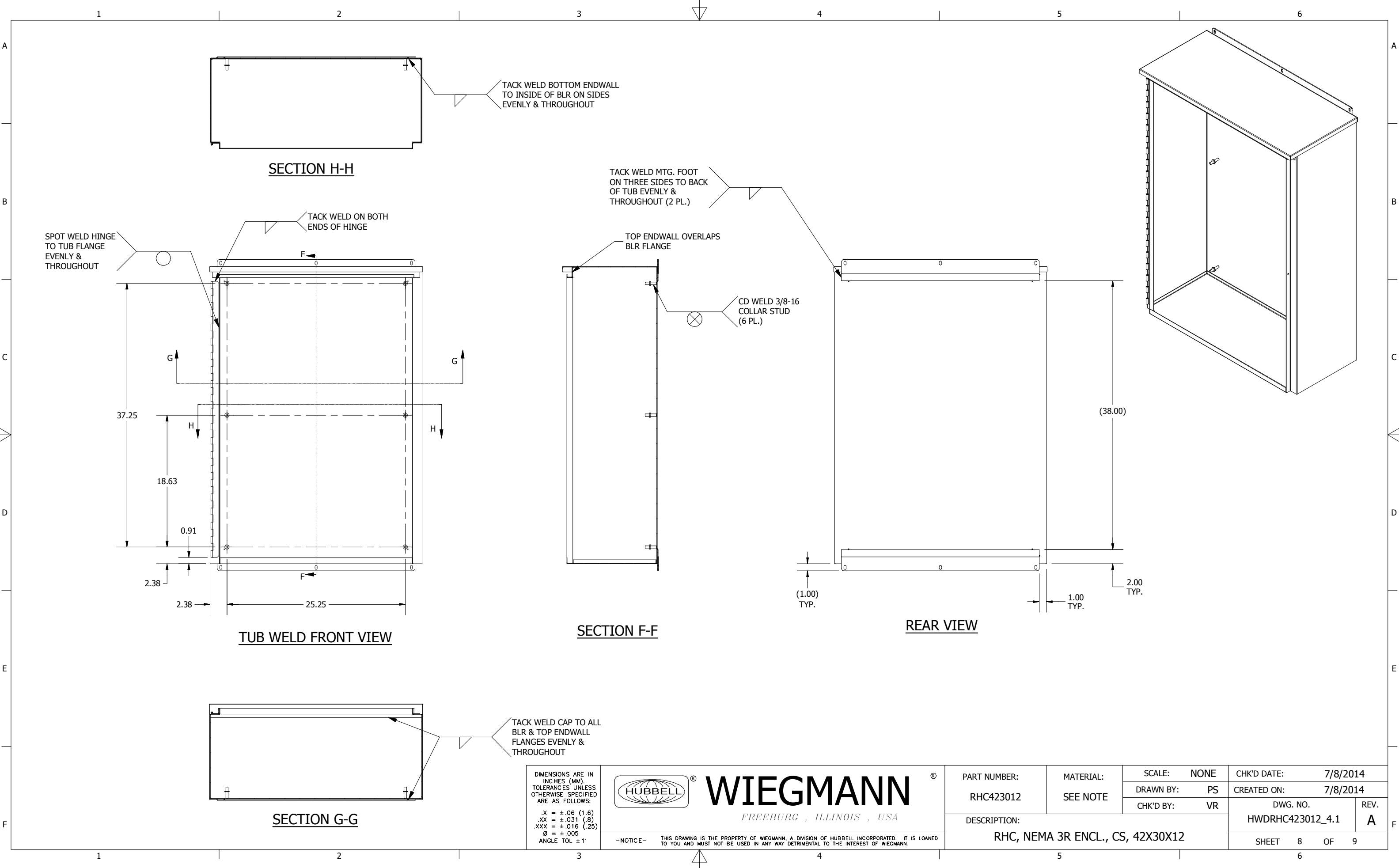
MATERIAL:  
SEE NOTE

SCALE: NONE  
 DRAWN BY: PS  
 CHK'D BY: VR

CHK'D DATE: 7/8/2014  
 CREATED ON: 7/8/2014

DESCRIPTION:  
RHC, BTM, CS, NEMA 3R, 30X12

DWG. NO. HWD RHC423012_3.3	REV. A
SHEET 7 OF 9	



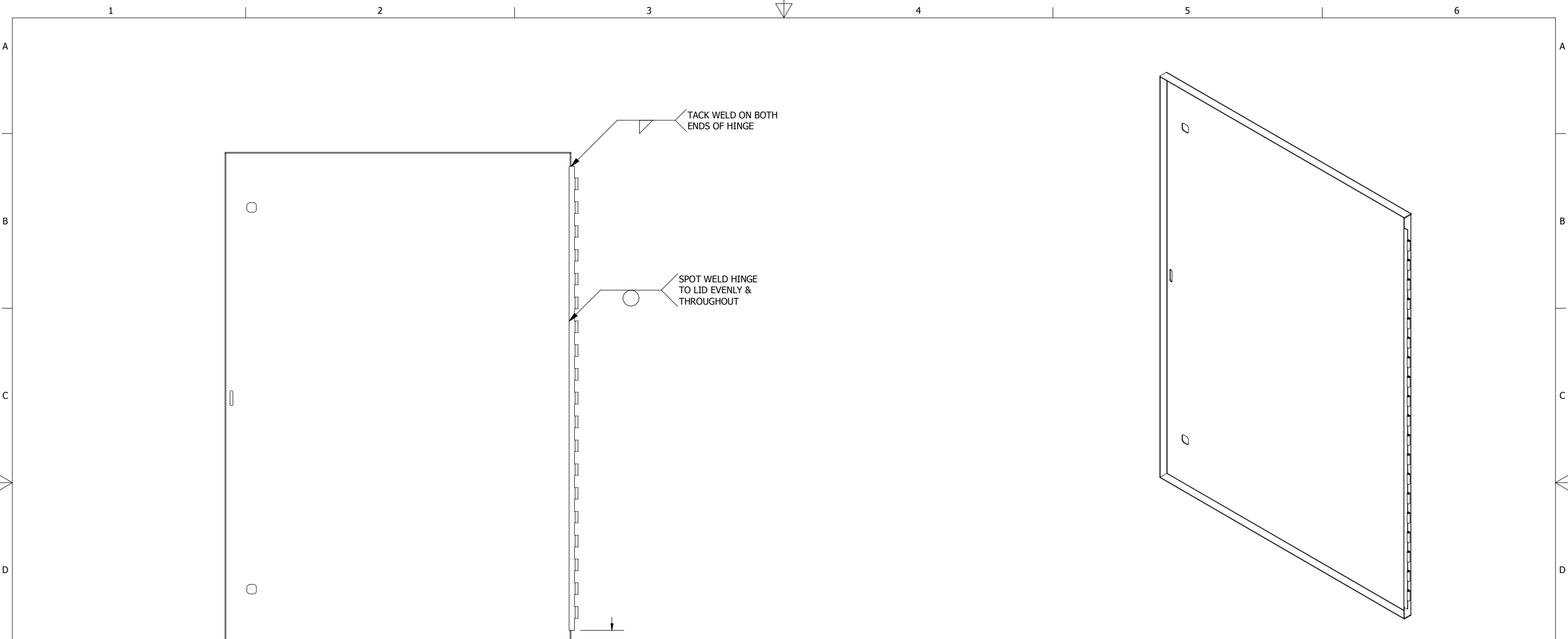
DIMENSIONS ARE IN INCHES (MM). TOLERANCES UNLESS OTHERWISE SPECIFIED ARE AS FOLLOWS:  
 .X = ±.06 (1.6)  
 .XX = ±.031 (.8)  
 .XXX = ±.016 (.25)  
 Ø = ±.005  
 ANGLE TOL ±1'



—NOTICE— THIS DRAWING IS THE PROPERTY OF WIEGMANN, A DIVISION OF HUBBELL INCORPORATED. IT IS LOANED TO YOU AND MUST NOT BE USED IN ANY WAY DETRIMENTAL TO THE INTEREST OF WIEGMANN.

PART NUMBER: RHC423012	MATERIAL: SEE NOTE	SCALE: NONE	CHK'D DATE: 7/8/2014
		DRAWN BY: PS	CREATED ON: 7/8/2014
DESCRIPTION: RHC, NEMA 3R ENCL., CS, 42X30X12		CHK'D BY: VR	DWG. NO. HWRHC423012_4.1
		REV. A	
		SHEET 8 OF 9	





LID WELD INSIDE VIEW

DIMENSIONS ARE IN INCHES (MM). TOLERANCES UNLESS OTHERWISE SPECIFIED ARE AS FOLLOWS:  
 .X = ±.06 (1.6)  
 .XX = ±.031 (.8)  
 .XXX = ±.016 (.25)  
 Ø = ±.005  
 ANGLE TOL ± 1°



**WIEGMANN**  
 FREEBURG , ILLINOIS , USA

-NOTICE- THIS DRAWING IS THE PROPERTY OF WIEGMANN, A DIVISION OF HUBBELL INCORPORATED. IT IS LOANED TO YOU AND MUST NOT BE USED IN ANY WAY DETRIMENTAL TO THE INTEREST OF WIEGMANN.

PART NUMBER:  
 RHC423012

MATERIAL:  
 SEE NOTE

SCALE: NONE  
 DRAWN BY: PS  
 CHK'D BY: VR

CHK'D DATE: 7/8/2014  
 CREATED ON: 7/8/2014

DWG. NO. HWDRHC423012\_4.2  
 REV. A

DESCRIPTION:  
 RHC, NEMA 3R ENCL., CS, 42X30X12

SHEET 9 OF 9